

350

L. & S.-54

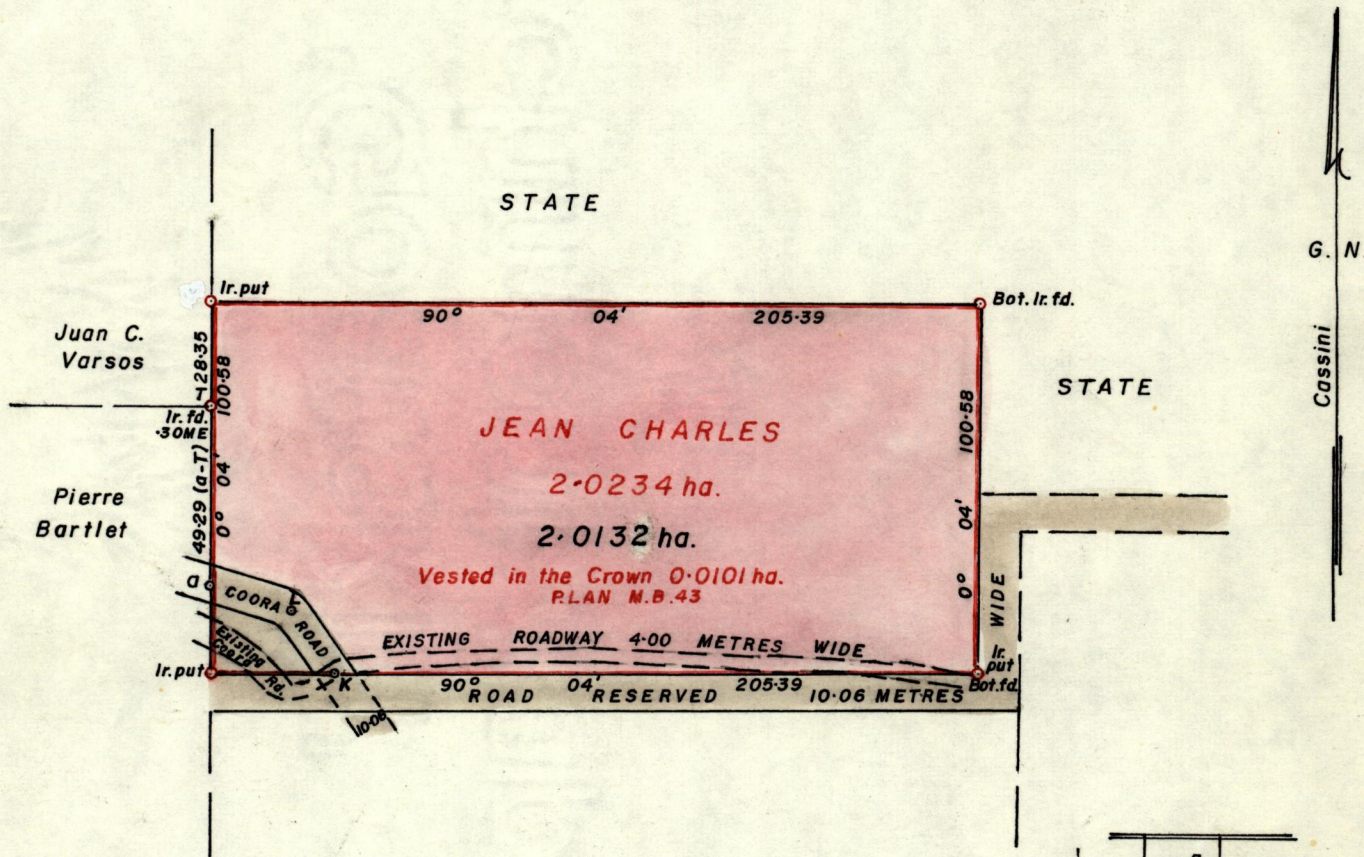
587

No 24129

R.P.O. Vol. 124
C.T. Vol. 3262

Fol. 305
Fol. 125

Ward of Siparia
County of St. Patrick
Cadastral Sheet 73B 6.17.C.
1/a



	a	
5-03	21-12	5-03
RESVD. WIDE	O	285' 14'
	L	
ROAD 10-06 METRES	L	5-03
	O	
	K	323° 13'

Approved

Alexander Thibault
 Director of Surveys
 88.09.30

SCALE 1 - 2000

Note: To obtain compass bearings add/subtract 4 minutes Distances are in metres

PLAN of a Parcel of land coloured pink in the Ward of Siparia
 Containing Two point zero one three two hectares
 Redefined by me, with due authority, in January 1988

I certify that I have complied with rule 76 under section 14(2)(d) of the Land Surveyors' Ordinance 1952, and that this plan is correct.

Checked by *[Signature]* 20/9/88

Entered Land Surveyor, Trinidad 21st September 1988

Original Survey — Bk. 470 fol. 89