

35(1)

L. & S.—54

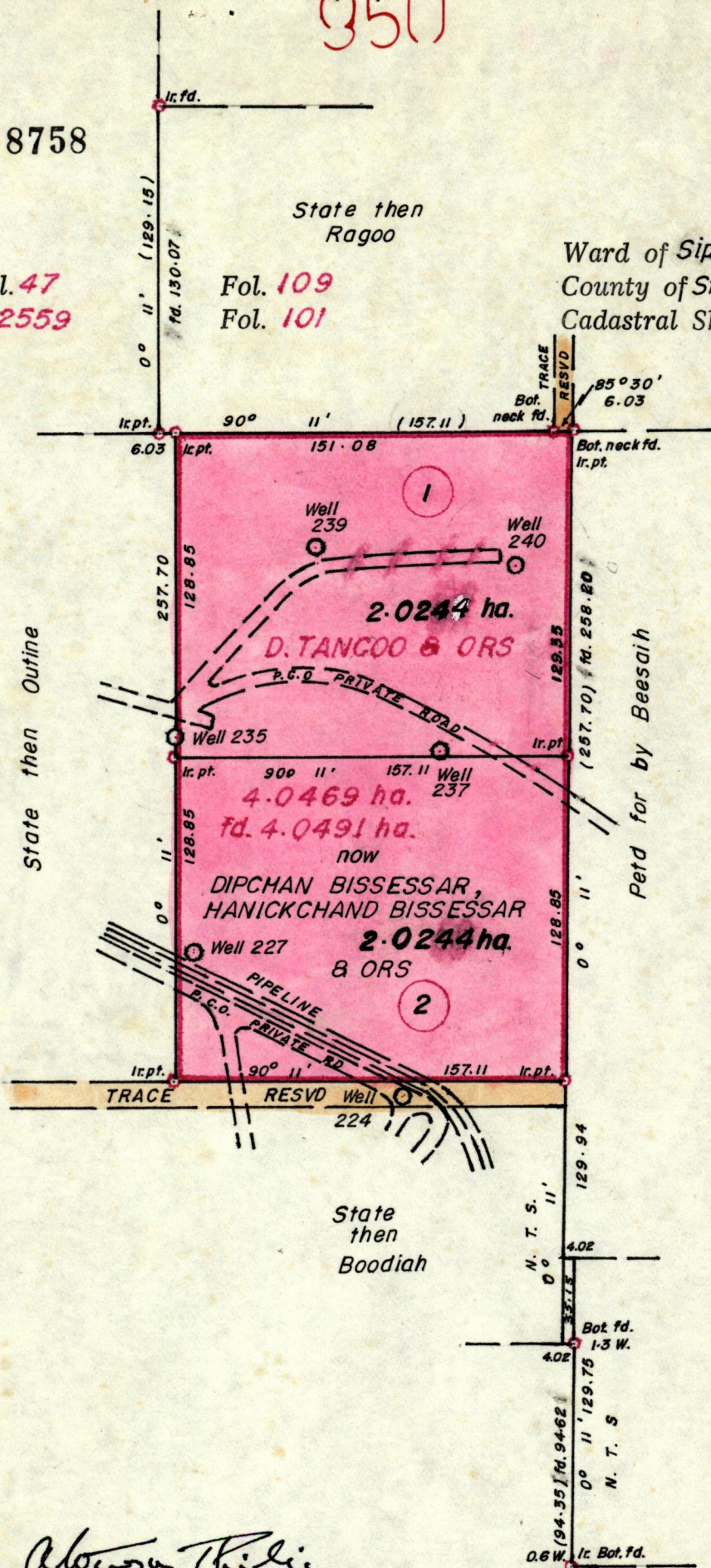
567

No 8758

R.P.O. Vol. 47
C.T. Vol. 2559

Fol. 109
Fol. 101

Ward of Siparia
County of St Patrick
Cadastral Sheet G.II.G. 62.F
2/d



Approved

Alwyn Thiel
Director of Surveys
88.09.08

Bearings grid from Solar obs.

Note: To obtain compass bearings add/subtract

SCALE 1:2500

minutes

Distances are in metres

PLAN of 2 Parcelsof land coloured pink in the Ward of Siparia.

Containing together four point zero four eight eight hectares

Surveyed by me, with due authority, in September 1987

I certify that I have complied with rule 76 under section 14(2)(d) of the Land Surveyors' Ordinance 1952, and that this plan is correct.

Checked by *GR 6/9/88*

Entered

Land Surveyor, Trinidad *H. K. ...* 19.88

Original Survey - BK 461 fol. 189



3

7