

1091

REMAINING PORTION

R.P.O. Vol. 58

Fol. 217

Cadastral Sheet F. 15. F. ^{62E}/_{3/b}

C. of T. Vol. 1502

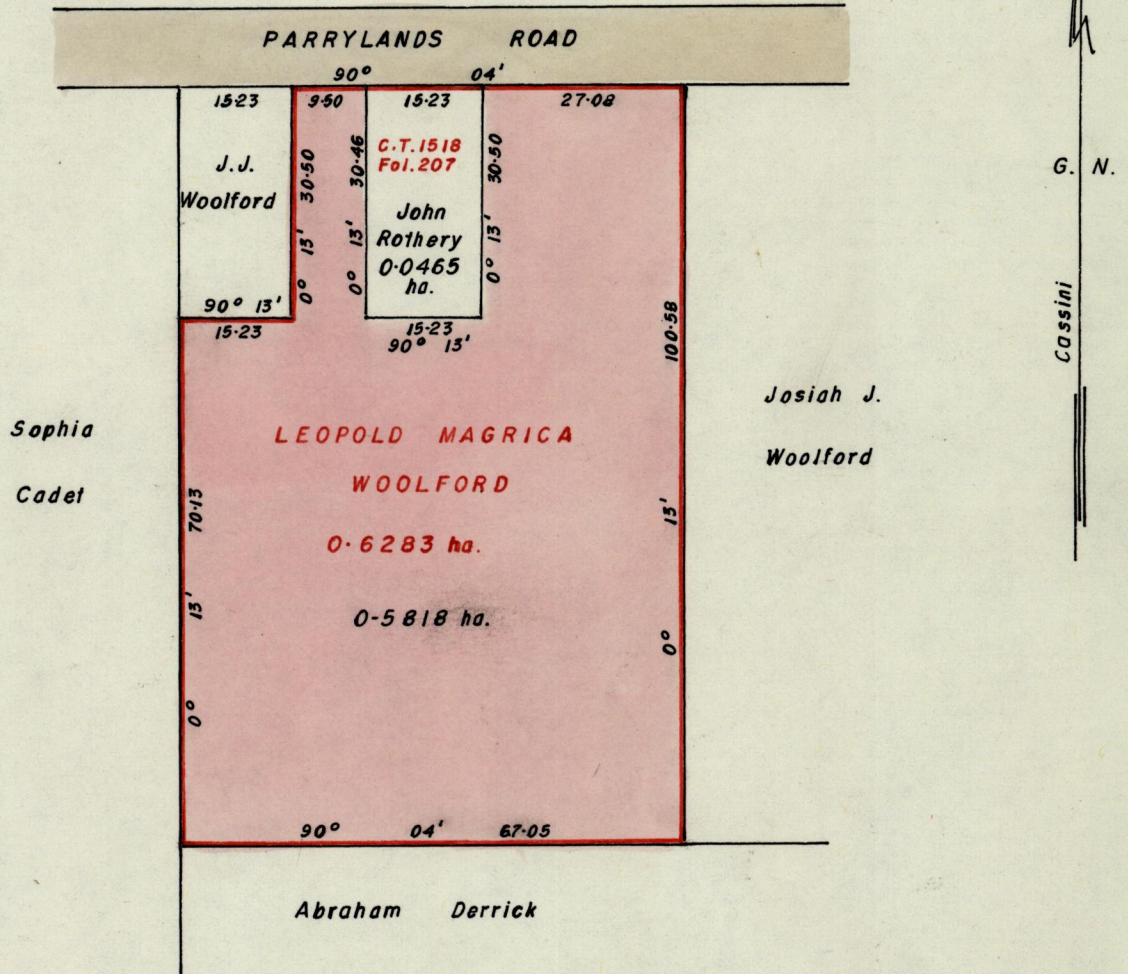
Vol. 87

950

Ward of La Brea

County of St. Patrick

564



Approved

Alwyn Thilip
 Director of Surveys
 88.09.06

SCALE 1 - 1000

Note: To obtain compass bearings ^{add} 13 _{subtract} minutes

Distances are in metres

This is a true copy of a diagram of Point Six two eight three of a hectare originally granted to LEOPOLD MAGRICA WOOLFORD, shewing a portion coloured pink and containing Point Five eight one eight of a hectare being the remainder after one previous transfer of another portion of the land. 14 (2) (d) of the Land Surveyors Ordinance 1952, the dividing lines having been run in conformity with Rule 76 under Sec. ~~7(1)~~ of Cap. 27, No. 2 and duly certified by the Director of Surveys.

Checked by *GR 6/9/58*

Entered on

H. H. C. A. B.
 Land Surveyor, Trinidad, *29 August* 19*58*

Original Survey - BK 940 Feb. 62