

350

L. & S.—54

562

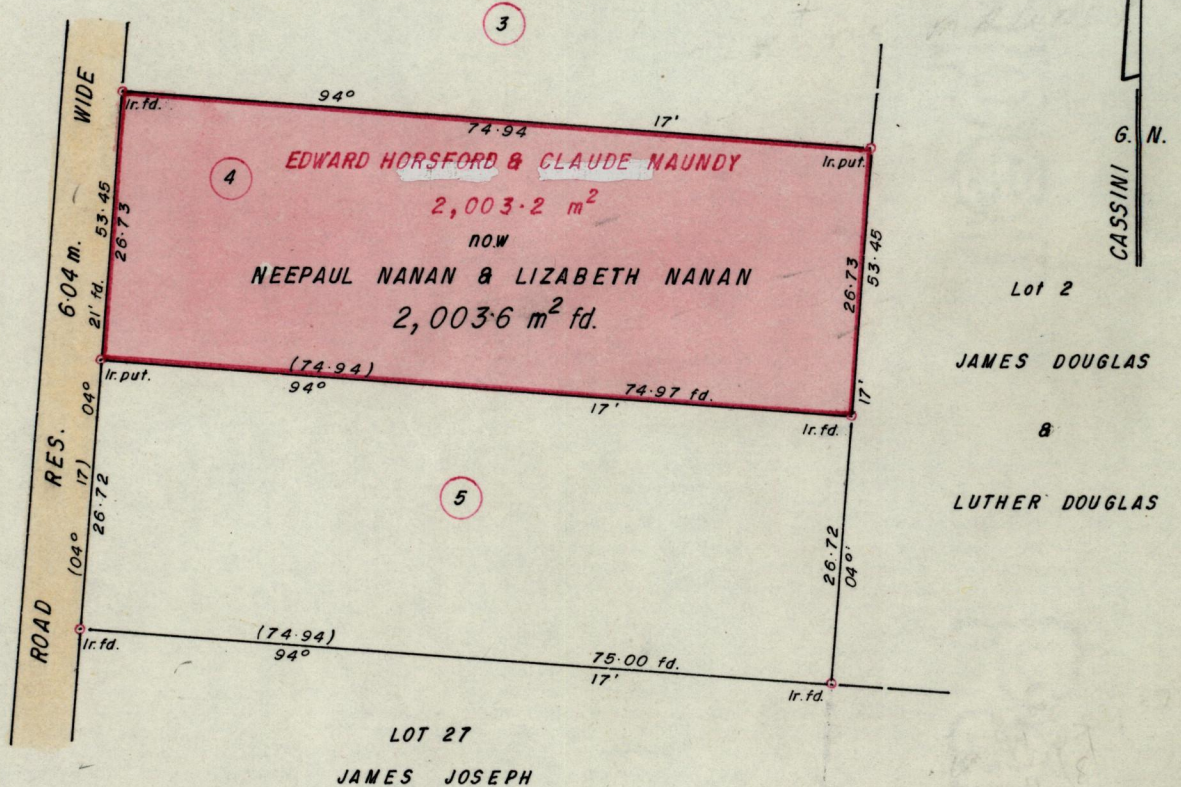
No 23350

R.P.O. Vol.
 C.T. Vol. 2095

Fol.
 Fol. 195

Ward of Tobago
 Parish of St. Patrick
 Cadastral Sheet I.21.A 1 E
 575/4

VIDE BK. 1003 FOL. 145



Approved

Alouise Thibault
Director of Surveys
88.09.06

Bearings are Cassini Grid, based on Solar Obs.

SCALE 1/750

Note: To obtain compass bearings add/subtract minutes Distances are in metres

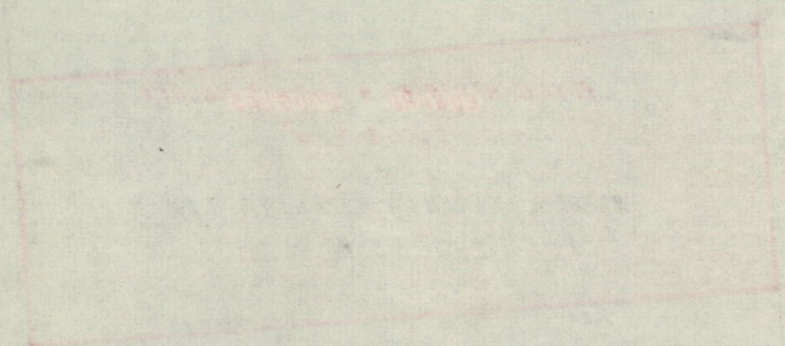
PLAN of a Parcel of land coloured pink in the Ward of Tobago
Containing two thousand and three point six square metres
Redefined by me, with due authority, in July 1988

I certify that I have complied with rule 76 under section 14(2)(d) of the
Land Surveyors' Ordinance 1952, and that this plan is correct.

Checked by *GR 5/9/88*

M. Leonan
Land Surveyor, Trinidad 12th August 1988

Original Survey - BK. 1003 fol. 145



[Faint, illegible handwritten text]