

No 22307

350

561

R.P.O. Vol. 27
C.T. Vol. 1437

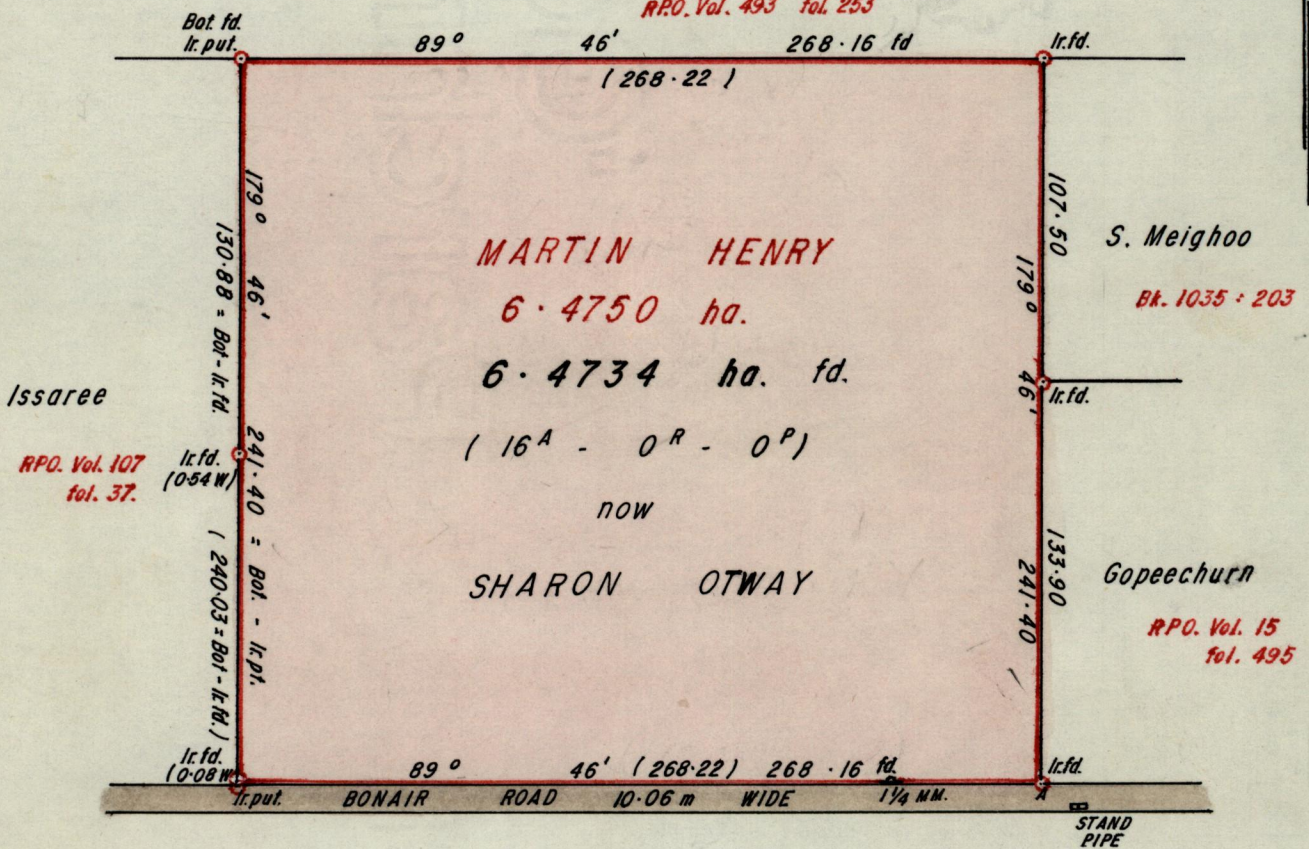
Fol. 53
Fol. 77

Ward of Tamana.
County of St. Andrew
Cadastral Sheet E.I.K & O.

(35 B)
2/a, 2/c

D. Hill
NOW
P. Alcalá

R.P.O. Vol. 493 fol. 253



Approved

Alonso Kilgus
Director of Surveys
88.09.06

A - MM (1/4) 270° 39' 49.64
A - Standpipe 121° 12' 14.55

SCALE 1:2500

Note: To obtain compass bearings add/subtract 14 minutes Distances are in metres.

PLAN of a Parcel of land coloured pink in the Ward of Tamana.

Containing six point four seven three four hectares.

Redefined
Surveyed by me, with due authority, between 25th and 28th July 1988 for County Council Employees Credit Union Co-operative Society Ltd.

I certify that I have complied with rule 76 under section 14(2)(d) of the Land Surveyors' Ordinance 1952, and that this plan is correct.

Checked by *GR 5/9/88* *Lawrence Clarke*

Entered Land Surveyor, Trinidad 29th July 1988.

Original Survey - BK 12 fol. 26