

95()

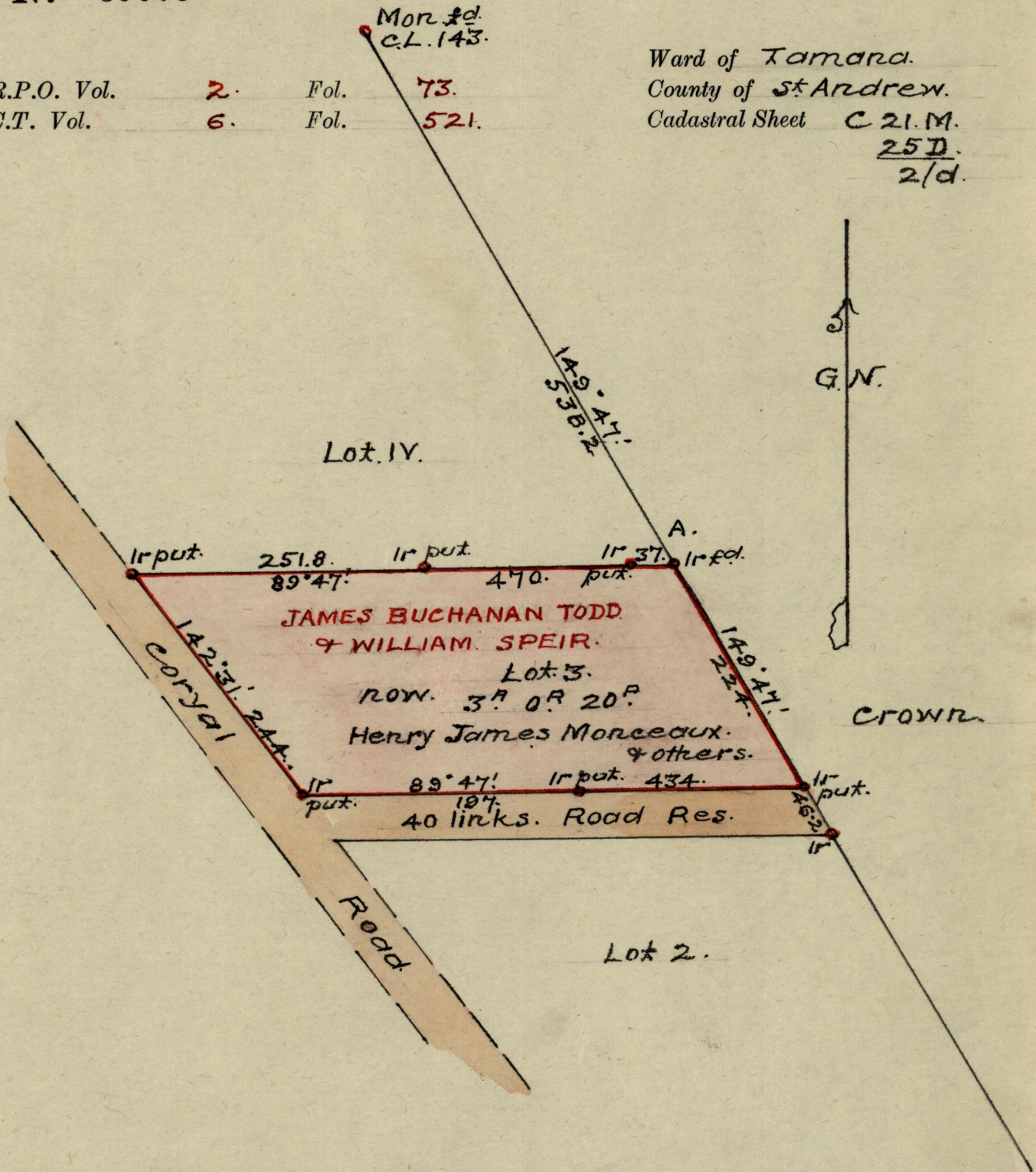
L. & S.—54

55()

Nº 39078

R.P.O. Vol. 2. Fol. 73.
C.T. Vol. 6. Fol. 521.

Ward of Tamara.
County of St Andrew.
Cadastral Sheet C 21.M.
25D.
2/d.



Approved

Alwyn Thilij
Director of Surveys
88.08.26

SCALE 1:1000.

Note: To obtain compass bearings add/subtract 13' minutes Distances are in links.

PLAN of a Parcel of land coloured pink in the Ward of St Andrew.

Containing three roads and twenty perches.

Surveyed by me, with due authority, in Sept 1960.

I certify that I have complied with rule 76 under Section 14 (2) (d) of the Land Surveyors' Ordinance 1952, and that this plan is correct.

Checked by *GR 23/8/88*

H. J. Monceaux

Entered.....

Land Surveyor, Trinidad. 30th Sept 1960

Original Survey - BK 166 fol. 50