

No 14770

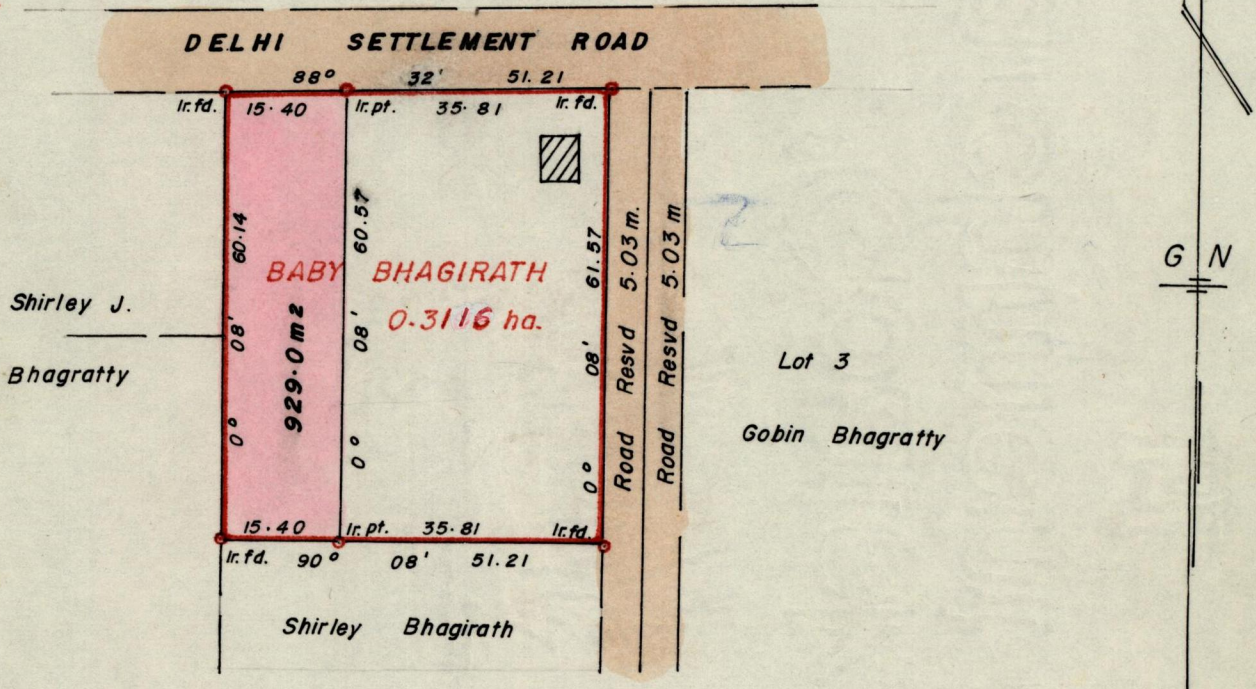
950

519

R.P.O. Vol. 62
C.T. Vol. 2664

Fol. 377
Fol. 37^B

Ward of Siparia
County of St Patrick
Cadastral Sheet G.II. C & G



Approved

K.B. Joseph
Director of Surveys

86.10.13

Bearings are grid from Solar Obs.

Note: To obtain compass bearings ~~add~~/subtract 8

SCALE

Distances are in metres

PLAN of a Parcel of land coloured pink in the Ward of Siparia
Containing nine hundred and twenty nine sq. metres
Surveyed by me, with due authority, in April 1985

I certify that I have complied with rule 76 under section 14(2)(d) of the
Land Surveyors' Ordinance 1952, and that this plan is correct.

Checked by *J.P.* 86.10.13

J.H. Cout
Land Surveyor, Trinidad 10th May 1986

Original Survey - Bk. 1124 fol. 173

