

Nº 47181

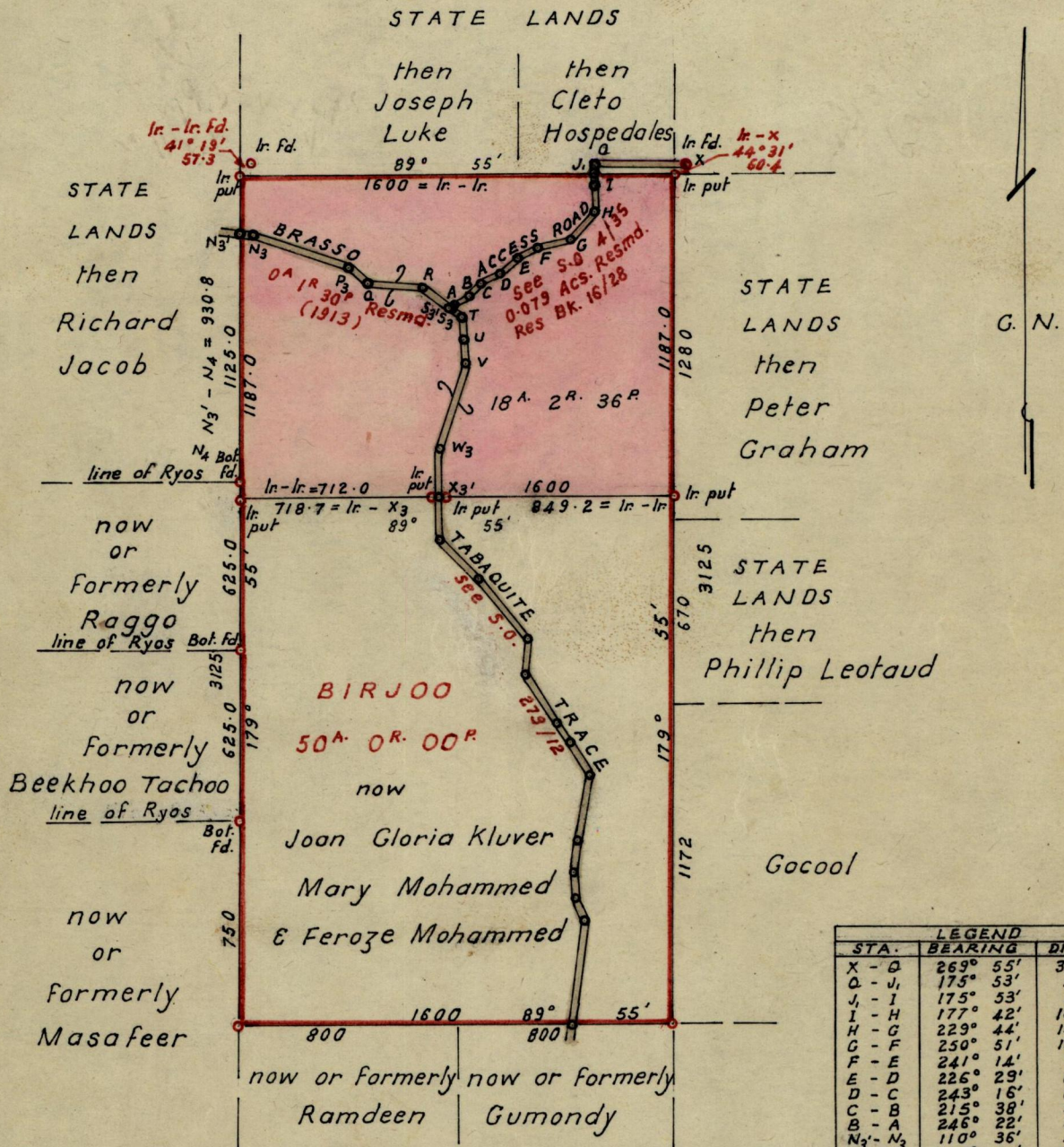
950

518

R.P.O. Vol. 10  
C.T. Vol. 1186

Fol. 31  
Fol. 497

Ward of Monsterrat  
County of Caroni  
Cadastral Sheet D. 19. G.



STA.	BEARING	DIST.
X - Q	269° 55'	348.8
Q - J <sub>1</sub>	175° 53'	43.1
J <sub>1</sub> - I	175° 53'	29.6
I - H	177° 42'	109.2
H - G	229° 44'	134.4
G - F	250° 51'	129.0
F - E	241° 14'	76.0
E - D	226° 29'	80.3
D - C	243° 16'	87.6
C - B	215° 38'	54.0
B - A	246° 22'	56.0
N <sub>3</sub> - N <sub>3</sub>	110° 36'	40.7
N <sub>3</sub> - P <sub>3</sub>	108° 31'	372.0
P <sub>3</sub> - Q	127° 57'	88.0
Q - R	94° 40'	208.0
R - S <sub>3</sub>	114° 48'	130.0
S <sub>3</sub> - T	155° 48'	65.5
T - U	179° 38'	84.0
U - V	170° 48'	92.5
V - W <sub>3</sub>	200° 22'	323.0
W <sub>3</sub> - X <sub>3</sub>	178° 36'	195.9
A - S <sub>3</sub>	246° 22'	1.8
S <sub>3</sub> - S <sub>3</sub>	335° 48'	13.2

Approved

*Leah Samuel*

17.11.80.

Director of Surveys

SCALE : 1/5000

Note: To obtain compass bearings add ~~subtract~~ 5 minutes Distances are in links  
PLAN of a Parcel of land coloured pink in the Ward of Monsterrat  
Containing eighteen acres two roods and thirty six perches.  
Surveyed by me, with due authority, in September 1979

I certify that I have complied with rule 76 under Section 14 (2) (d) of the Land Surveyors' Ordinance 1952, and that this plan is correct.

Checked by *L.F.D. 16/12/80*

*Lester B. Shumper*

Entered.....

Land Surveyor, Trinidad

17<sup>th</sup> Nov 1980

For Original see BK 253 fol. 237