

Nº 49537

R.P.O. Vol. 49 Fol. 49  
C.T. Vol. 626 Fol. 157

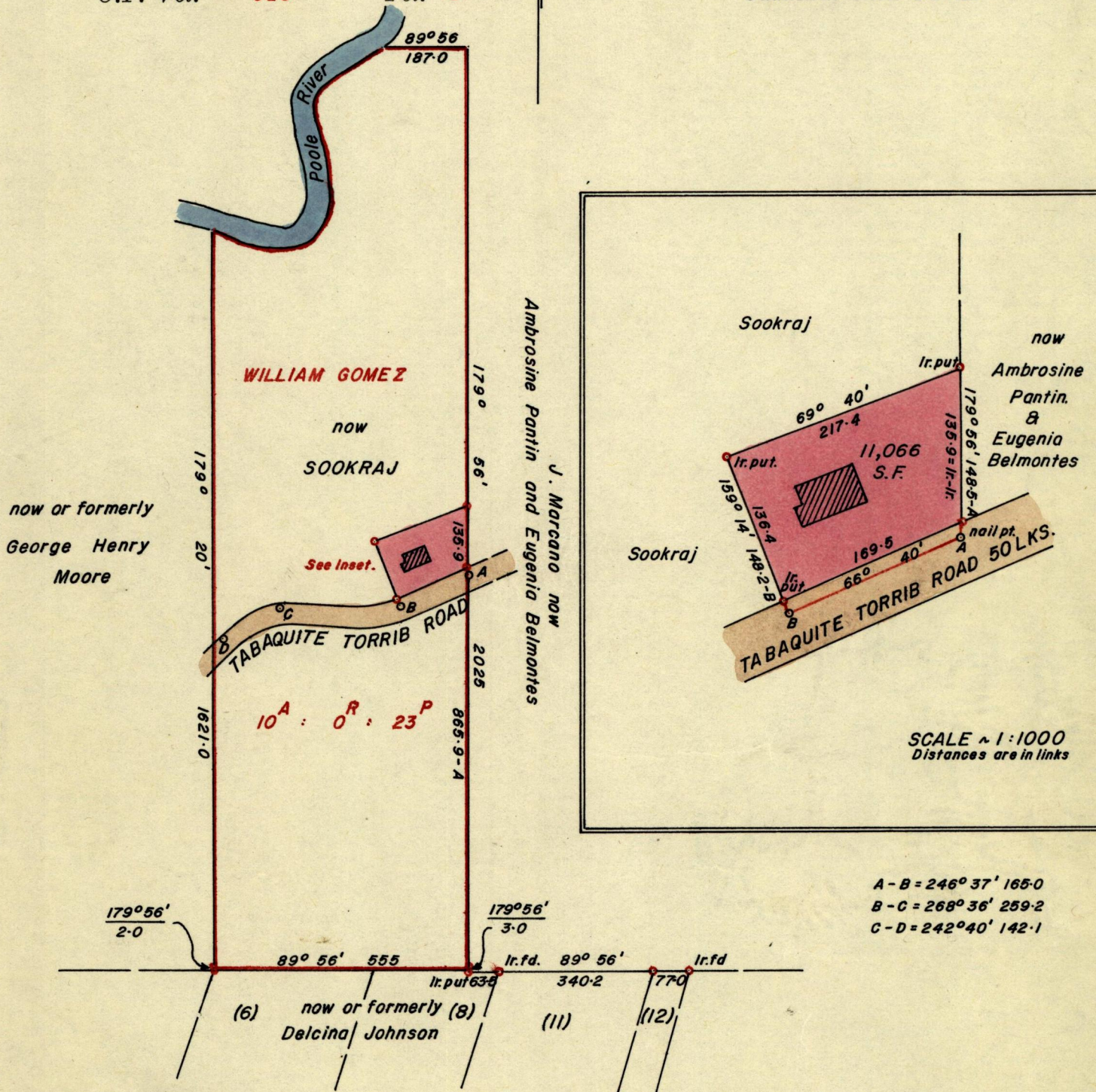
L. & S.—54

494

950

G. N.

Ward of Charuma & Ortoire  
County of Victoria  
Cadastral Sheet D24.L.



SCALE ~ 1:1000  
Distances are in links

A-B = 246° 37' 165.0  
B-C = 268° 36' 259.2  
C-D = 242° 40' 142.1

Approved

*K.B. Joseph*  
Director of Surveys  
25.7.80

SCALE ~ 1:2500

Note: To obtain compass bearings add/subtract 4 minutes Distances are in links

PLAN of a Parcel of land coloured pink in the Ward of Charuma & Ortoire  
Containing eleven thousand and sixty-six square feet.

Surveyed by me, with due authority, in June 1980

I certify that I have complied with rule 76 under Section 14 (2) (d) of the Land  
Surveyors' Ordinance 1952, and that this plan is correct.

Checked by *J.F.W. 25/9/80*

*Wimkon Rancharan*

Entered.....

Land Surveyor, Trinidad *4<sup>th</sup> July 1980*



for Original see BK 322.18