

Nº 48260

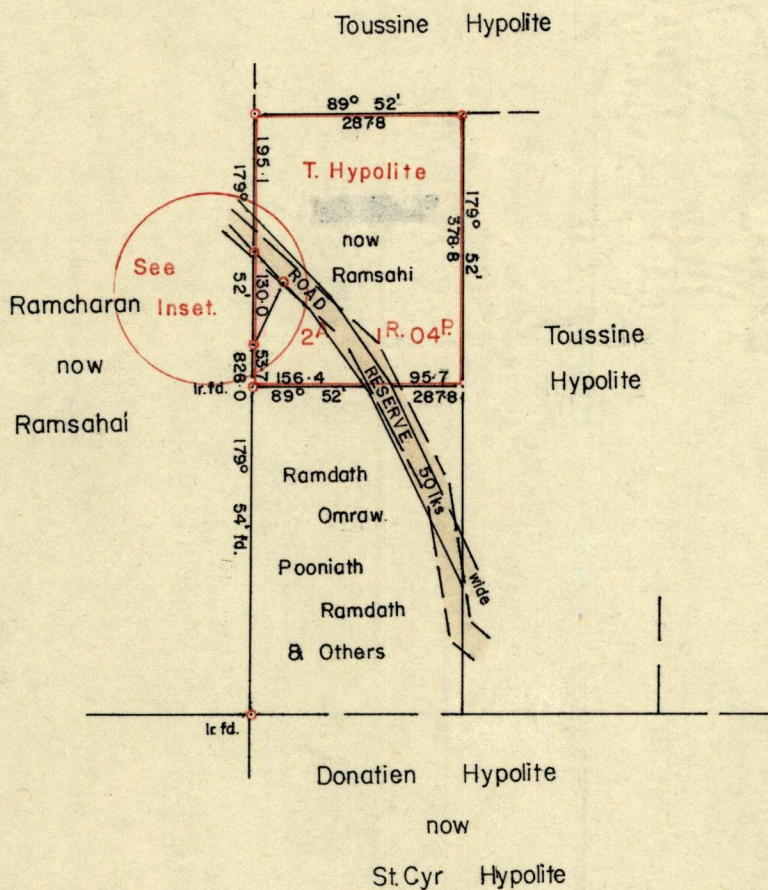
950

490  
490

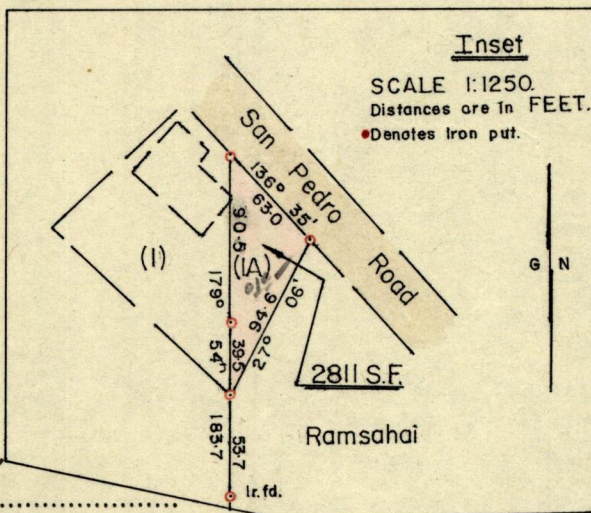
R.P.O. Vol. 201  
C.T. Vol. 2336

Fol. 355  
Fol. 235

Ward of Charuma.  
County of Nariva.  
Cadastral Sheet H.I. C.



G. N.



o Denotes Iron put except otherwise state

Approved

*H. B. Joseph*  
Director of Surveys

Bearings are based on Solar Observation

Note: To obtain true bearings add ~~some~~ 8 minutes

SCALE 4 chains = 1 inch.

Distances are in FEET.

PLAN of a Parcel of land coloured pink in the Ward of Charuma.

Containing two thousand eight hundred and eleven square feet.

Surveyed by me, with due authority, in August 1979

I certify that I have complied with rule 76 under Section 14 (2) (d) of the Land Surveyors' Ordinance 1952, and that this plan is correct.

Checked by *L. J. W. 4/9/80*

*[Signature]*

Entered.....

Land Surveyor, Trinidad ..... 9<sup>th</sup> Jan 1980.

for Original see bk 997:154