

Nº 42969

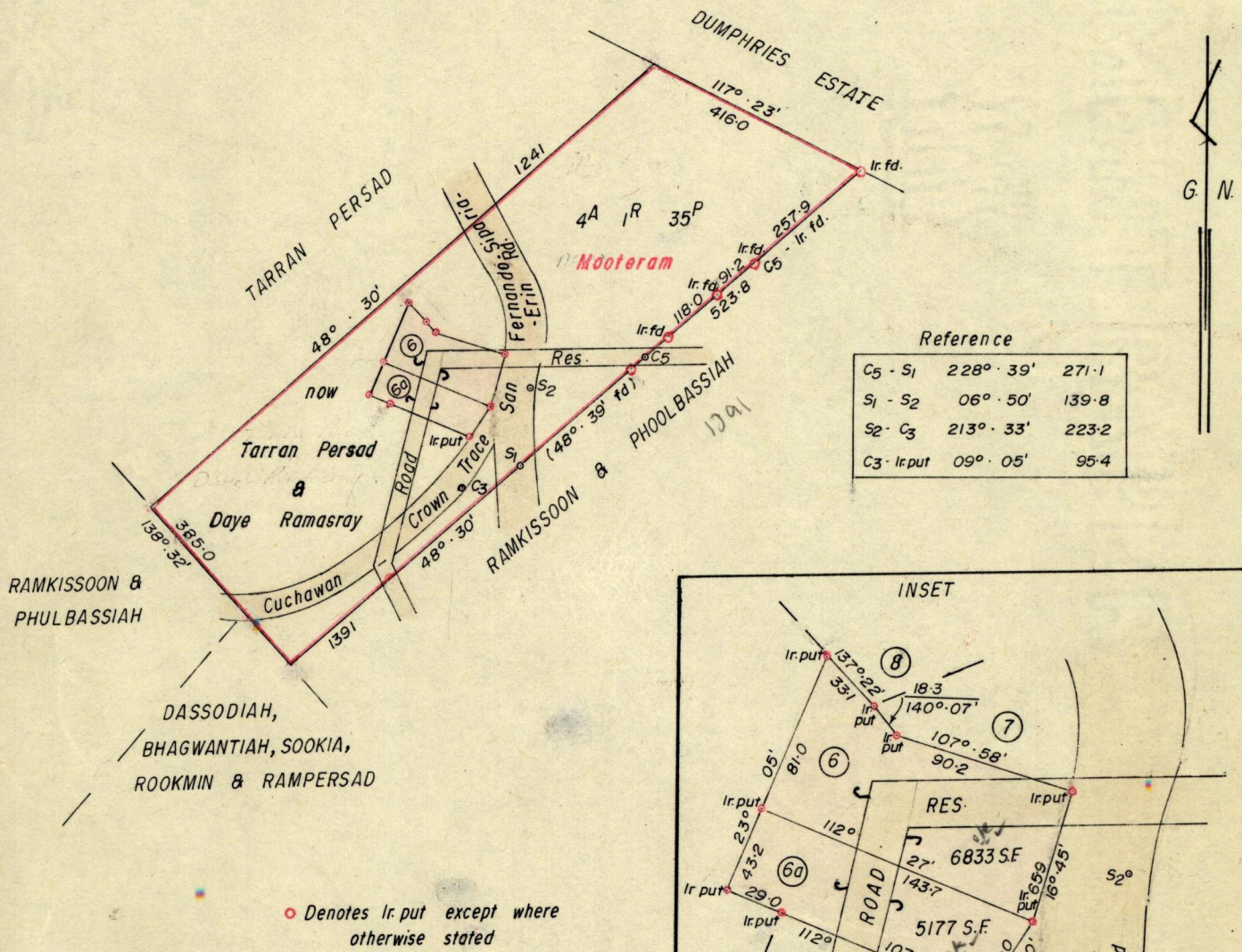
350

489

R.P.O. Vol. 34
C.T. Vol. 1306

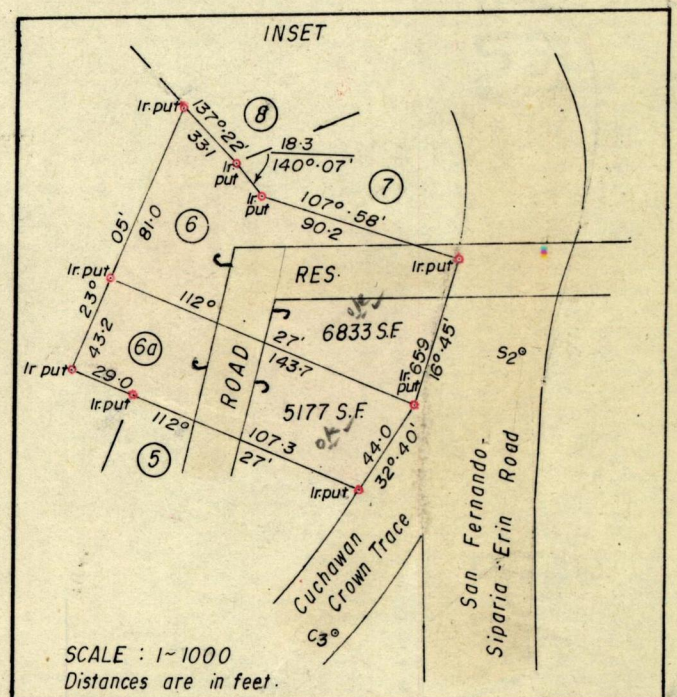
Fol. 373
Fol. 89

Ward of Naparima.
County of St. Victoria.
Cadastral Sheet G. B. N.



Reference

C5 - S1	228° . 39'	271.1
S1 - S2	06° . 50'	139.8
S2 - C3	213° . 33'	223.2
C3 - Ir.put	09° . 05'	95.4



Approved

K.B. Joseph
 Director of Surveys
 8.9.80

SCALE : 1 ~ 2500

minutes Distances are in links.

Note: To obtain compass bearings add/subtract
 PLAN of 2 Parcels of land coloured pink in the Ward of Naparima
 Containing together twelve thousand and ten square feet.

Surveyed by me, with due authority, in July 1979.

I certify that I have complied with rule 76 under Section 14 (2) (d) of the Land Surveyors' Ordinance 1952, and that this plan is correct.

Checked by *L.Y.W. 8/9/80*

Entered.....

Land Surveyor, Trinidad *has* 20.8.1979

for Original see BK 722:157