

35(1) 950

L. & S.—54

35(1)

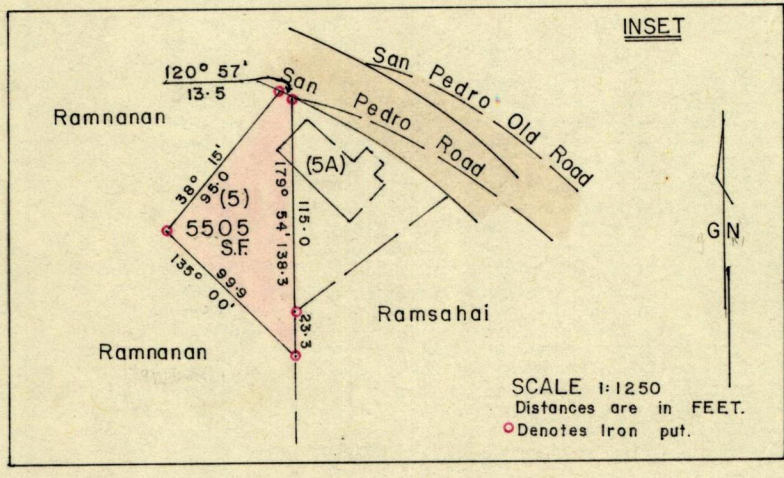
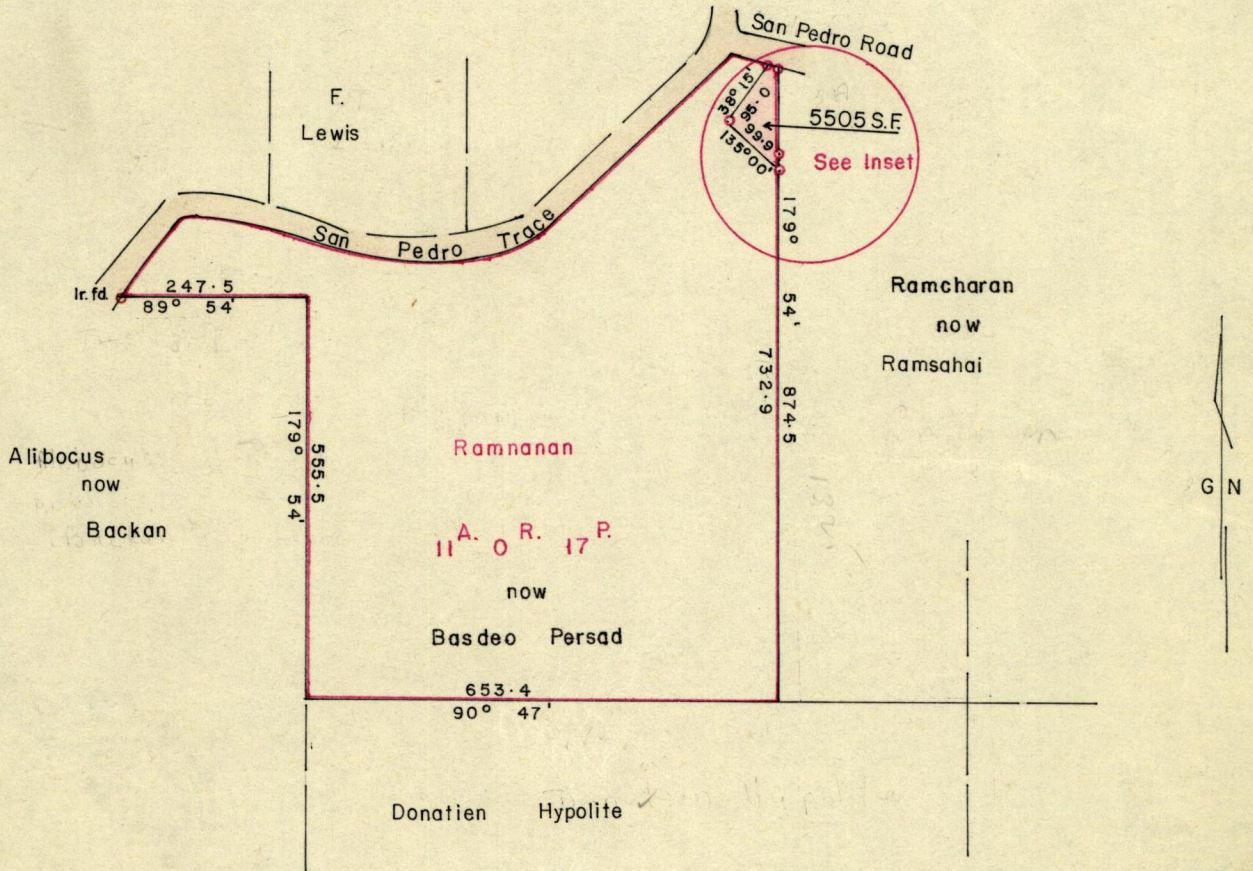
487

Nº 42610

R.P.O. Vol. 642
C.T. Vol.

Fol. 479
Fol.

Ward of Charuma
County of Nariva
Cadastral Sheet H.I.C. & D. 25. O.



Approved

K.B. Jones
Director of Surveys
4.9.80

SCALE 1 inch to 4 chains
Distances are in FEET.

Note: To obtain compass bearings add/subtract 6 minutes

PLAN of a Parcel of land coloured pink in the Ward of Charuma
Containing Five thousand five hundred and five square feet.

Surveyed by me, with due authority, in August 1979.

I certify that I have complied with rule 76 under Section 14 (2) (d) of the Land Surveyors' Ordinance 1952, and that this plan is correct.

Checked by *L.J.W. 2/9/80*

J.P. Bank
Land Surveyor, Trinidad 9th Jan 1980

for Original see Bk 593:146