

No 47230

950
350

486

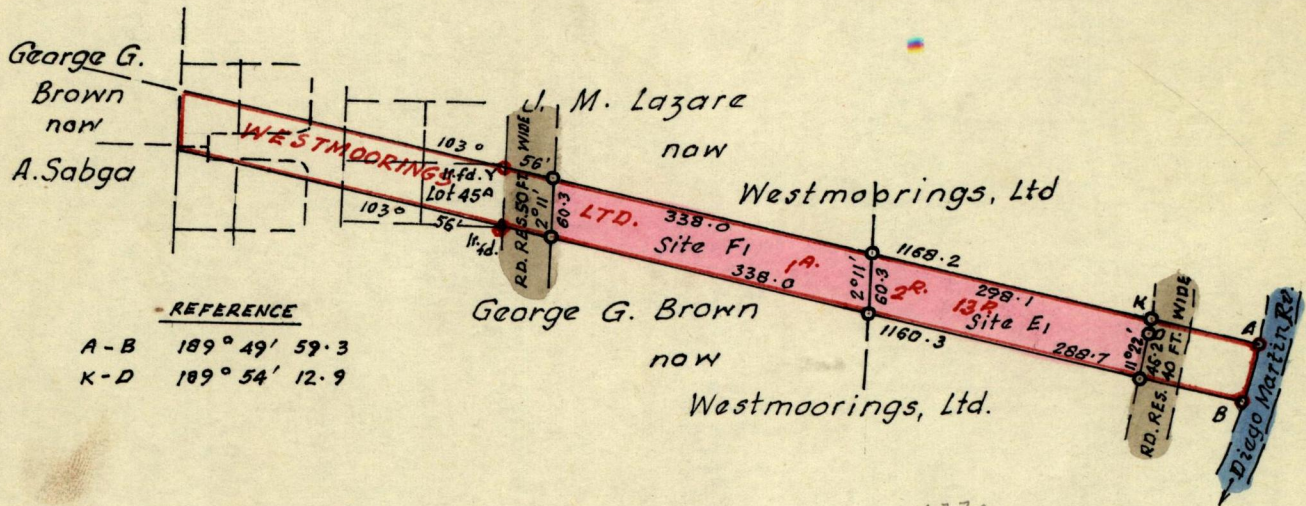
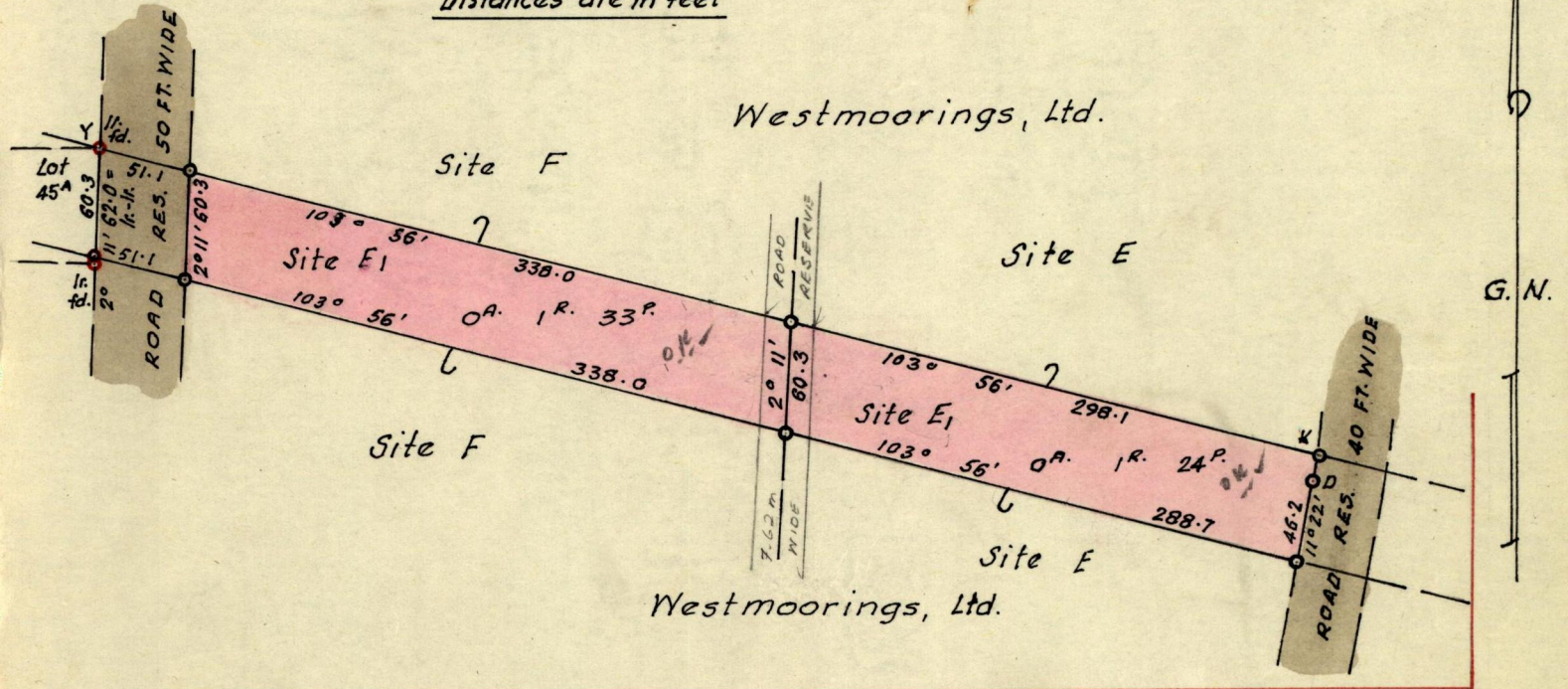
R.P.O. Vol. 281
C.T. Vol. 2531

Fol. 365
Fol. 549

Ward of Diego Martin
County of St. George
Cadastral Sheet A.19.C

INSET

Scale: 1/1250
Distances are in feet



Approved

W.B. Joseph
Director of Surveys
4.9.80

SCALE: 3 chains to 1 inch

Note: To obtain compass bearings ~~add~~ subtract 4 minutes Distances are in feet

PLAN of 2 Parcels of land coloured pink in the Ward of Diego Martin Containing

Surveyed by me, with due authority, in July 1980.

I certify that I have complied with rule 76 under Section 14 (2) (d) of the Land Surveyors' Ordinance 1952, and that this plan is correct.

Checked by *L.F.W. 4/9/80*

J.R. Jardine
Land Surveyor, Trinidad
25/8/1980

for Original see BK 1110:122

7