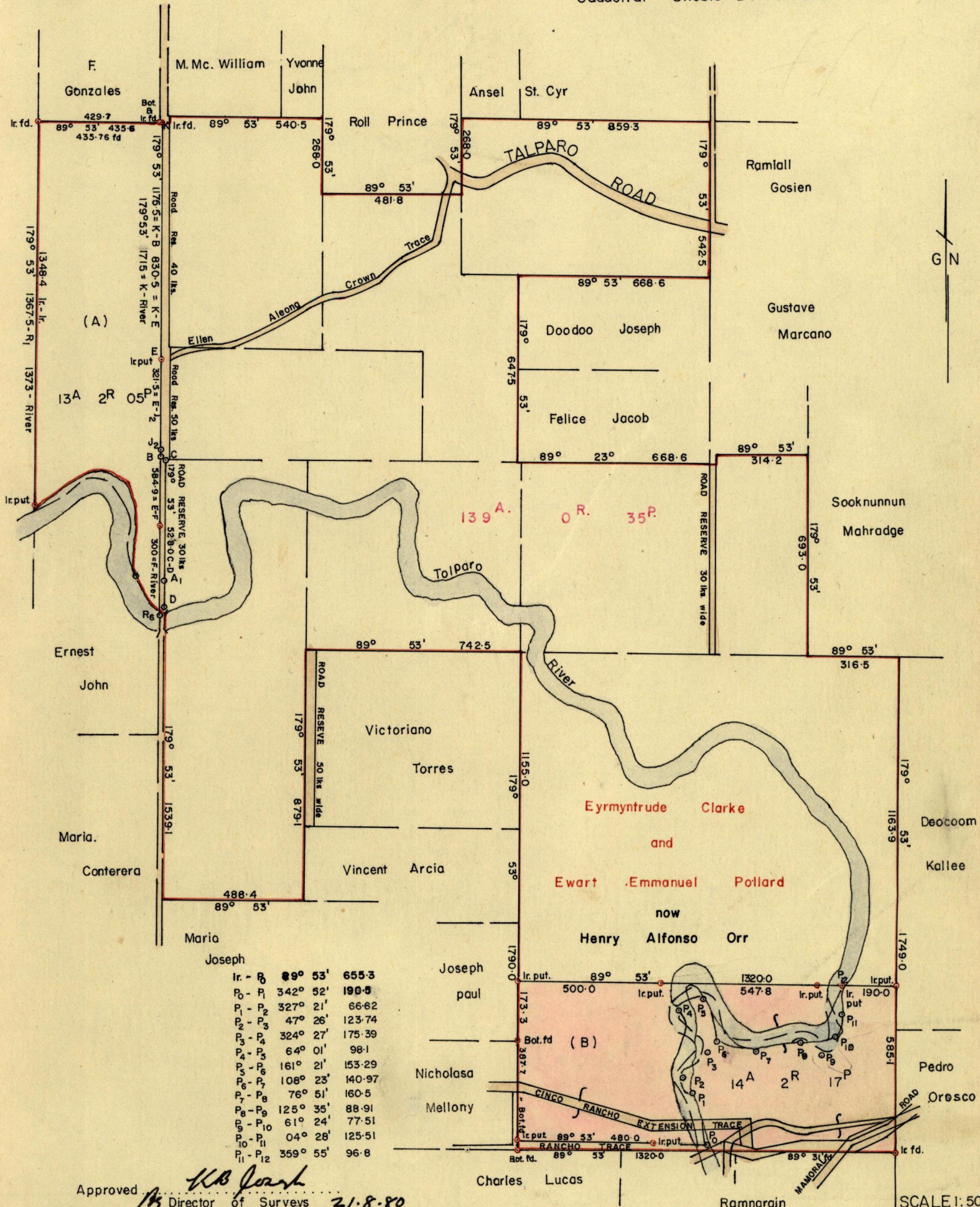


350

473



Approved *KB Joseph*
 Director of Surveys 21.8.80
 Note: To obtain compass bearings add 7 minutes.

SCALE 1:5000
 Distances are in FEET.

PLAN of a Parcel of land coloured pink in the Wards of San Rafael & Chaguanas.
 Containing fourteen acres, two roads and seventeen perches.
 Surveyed by me, with due authority, in May 1980.

I certify that I have complied with rule 76 under Section 14 (2) (d) of the
 Land Surveyors Ordinance 1952, and that this plan is correct.

Checked by *L.F.W. 21/8/80*
 Entered by

[Signature]
 Land Surveyor, Trinidad 15th August 1980

for original see ~~pk~~ 7 for 43