

No 45151

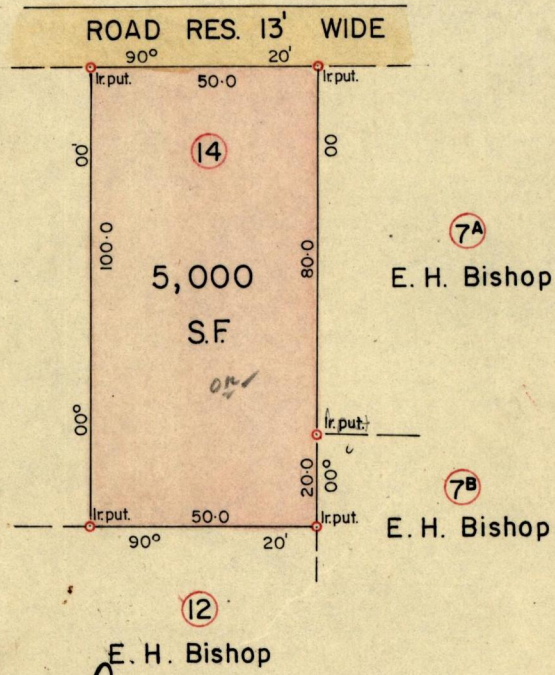
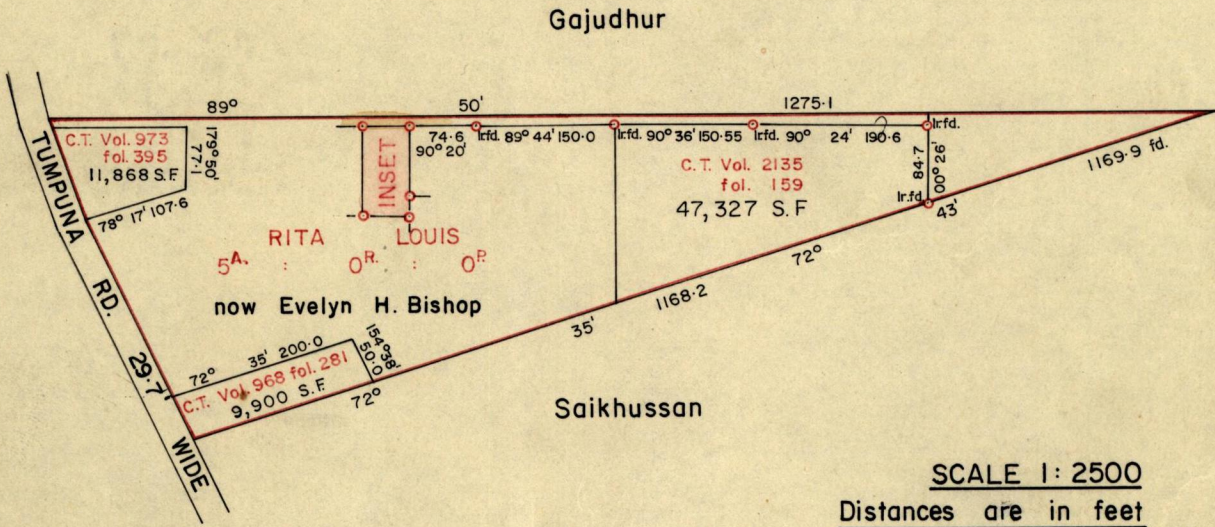
35()

47() 70

R.P.O. Vol. 6
C.T. Vol. 666

Fol. 273
Fol. 179

Ward of Arima.
County of St. George.
Cadastral Sheet B.25.E



Approved

[Signature]
 Director of Surveys

14-880.

SCALE 1: 500

Note: To obtain compass bearings add/subtract 10 minutes Distances are in feet.
 PLAN of a Parcel of land coloured Pink in the Ward of Arima.
 Containing five thousand square feet.

Surveyed by me, with due authority, in May 1980

I certify that I have complied with rule 76 under Section 14 (2) (d) of the Land Surveyors' Ordinance 1952, and that this plan is correct.

Checked by *[Signature]* 14/1/80

[Signature]
Land Surveyor, Trinidad 17th July 1980

for Original see Bk 728 fol 3^a

{Last parcel at the edge of the page}

