

Nº 44837

35(1)

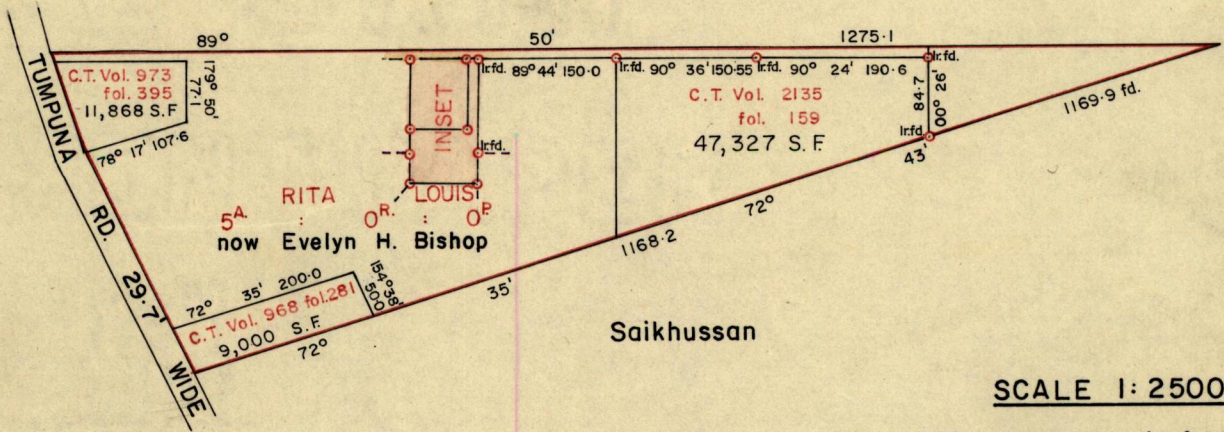
469

R.P.O. Vol. 6
C.T. Vol. 666

Fol. 273
Fol. 179

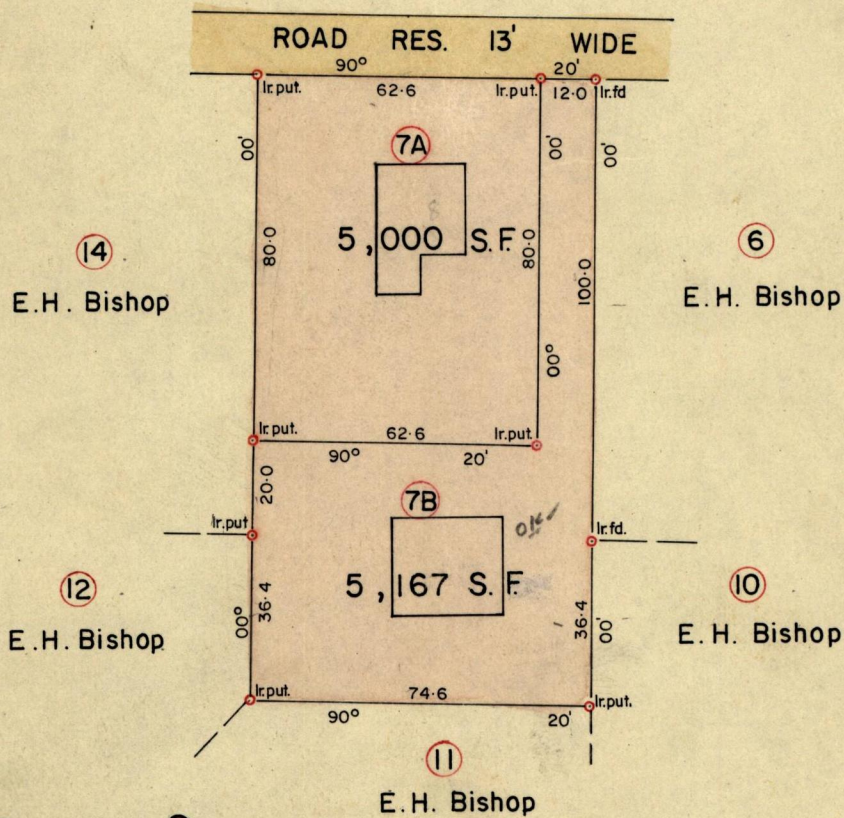
Ward of Arima.
County of St. George.
Cadastral Sheet B.25. E

Gajudhur



SCALE 1: 2500

Distances are in feet.



Approved

John Samuel
 14.880. Director of Surveys

SCALE 1: 500

Note: To obtain compass bearings add/subtract 10 minutes Distances are in feet.

PLAN of a Parcel of land coloured Pink in the Ward of Arima.

Containing together ten thousand one hundred and sixty seven square feet.

Surveyed by me, with due authority, in May 1980

I certify that I have complied with rule 76 under Section 14 (2) (d) of the Land Surveyors' Ordinance 1952, and that this plan is correct.

Checked by *D.J.W. 11/8/80*

Hugo Samson
Land Surveyor, Trinidad 1776 July 1980

for Original see Bk 728 fol 3^a
(The last parcel at the edge of the page.)

