

Nº 44899

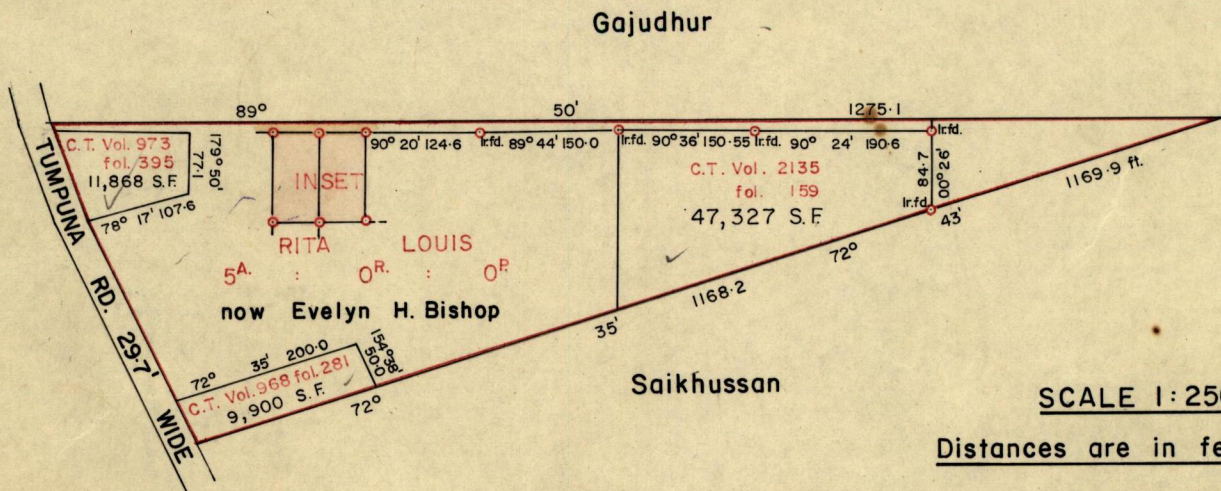
950

468

R.P.O. Vol. 6
C.T. Vol. 666

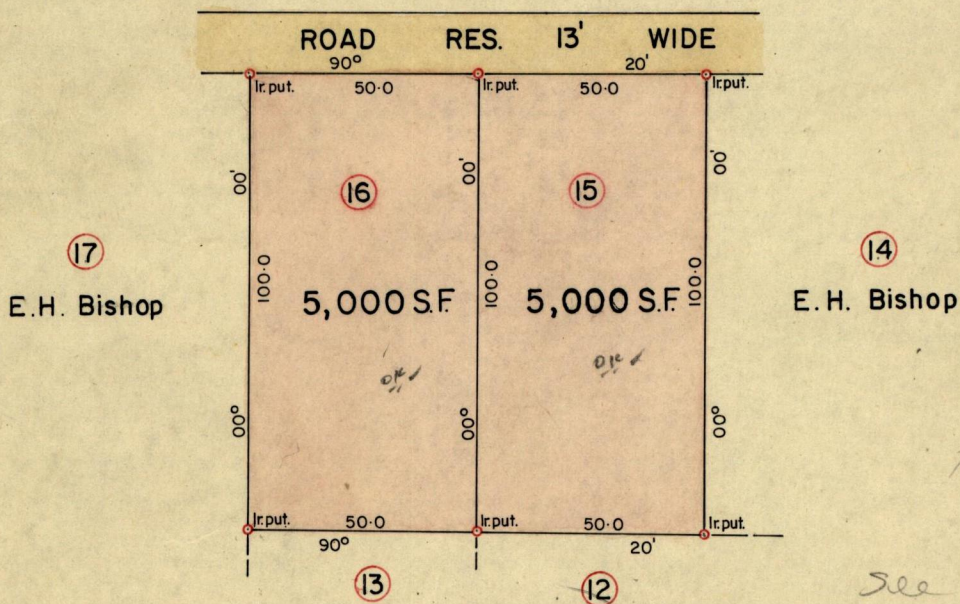
Fol. 273
Fol. 179

Ward of Arima.
County of St George.
Cadastral Sheet B.25.E



SCALE 1:2500

Distances are in feet.



Approved

E. H. Bishop

[Signature]
 14.880
 Director of Surveys

SCALE 1:500

Note: To obtain compass bearings add/subtract 10 minutes Distances are in feet.

PLAN of a Parcel of land coloured Pink in the Ward of Arima.

Containing together ten thousand square feet.

Surveyed by me, with due authority, in May 1980

I certify that I have complied with rule 76 under Section 14 (2) (d) of the Land Surveyors' Ordinance 1952, and that this plan is correct.

Checked by *[Signature]* 14/8/80

[Signature]
Land Surveyor, Trinidad 17th July 1980

For Original see BK 728 fol 3^a
(Last parcel on the edge of the page)

