

950

443

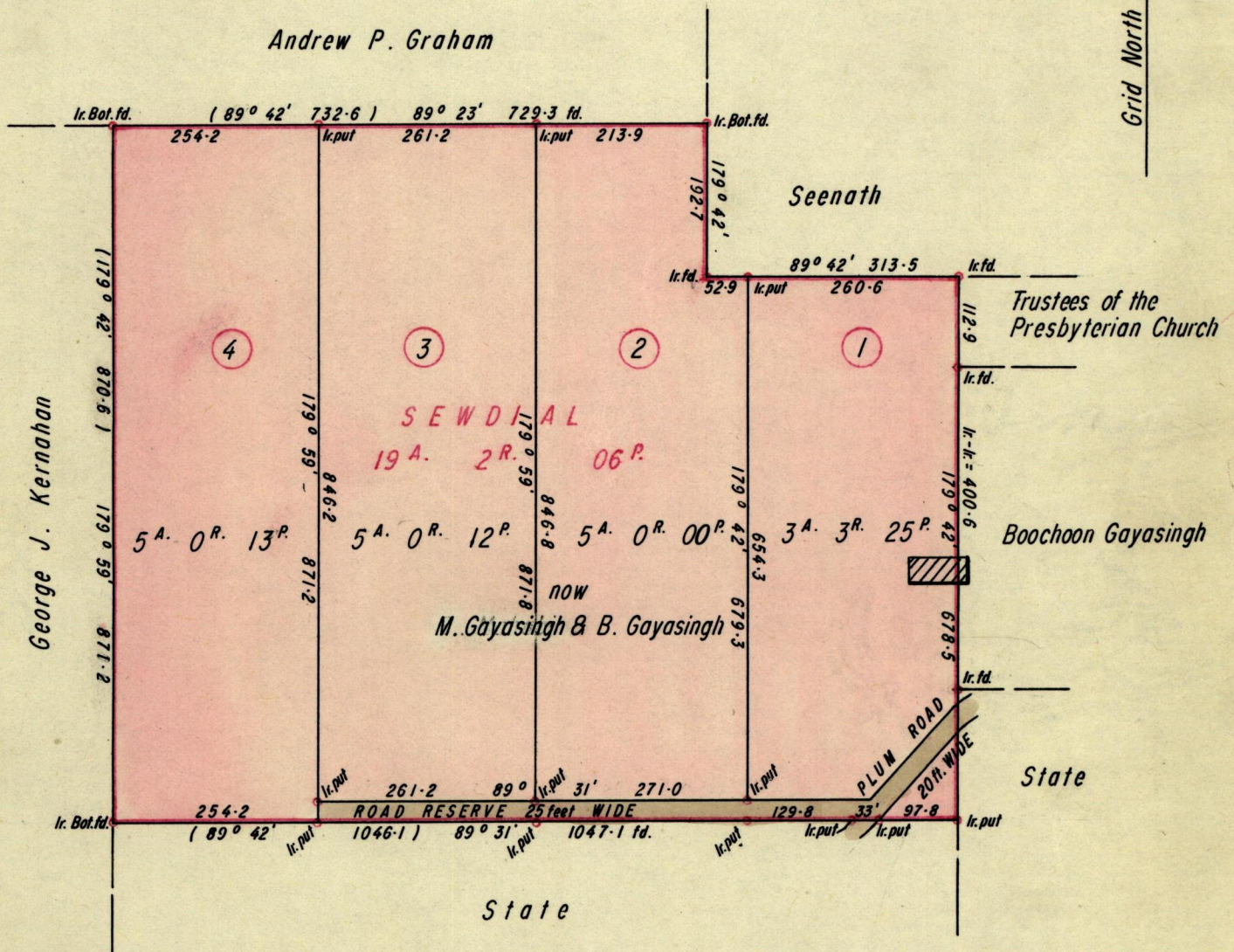
Nº 40218

R.P.O. Vol. 41
C.T. Vol. 630

Fol. 427
Fol. 329

Ward of Turure
County of St. Andrew
Cadastral Sheet E.8.1

Grid North



Approved
John Samuel
Director of Surveys

SCALE 1 : 2500
Distances are in feet

Note: To obtain compass bearings add/subtract 18 minutes
PLAN of 4 Parcels of land coloured pink in the Ward of Turure
Containing together nineteen acres and ten perches
Surveyed by me, with due authority, in Aug. & Dec. 1979

I certify that I have complied with rule 76 under Section 14 (2) (d) of the Land Surveyors' Ordinance 1952, and that this plan is correct.

Checked by *L.H. 28/1/80*
Entered.....
Land Surveyor, Trinidad.....*12-7*.....19.....*80*

for Original see bk 297:51