

350

L. & S.—54

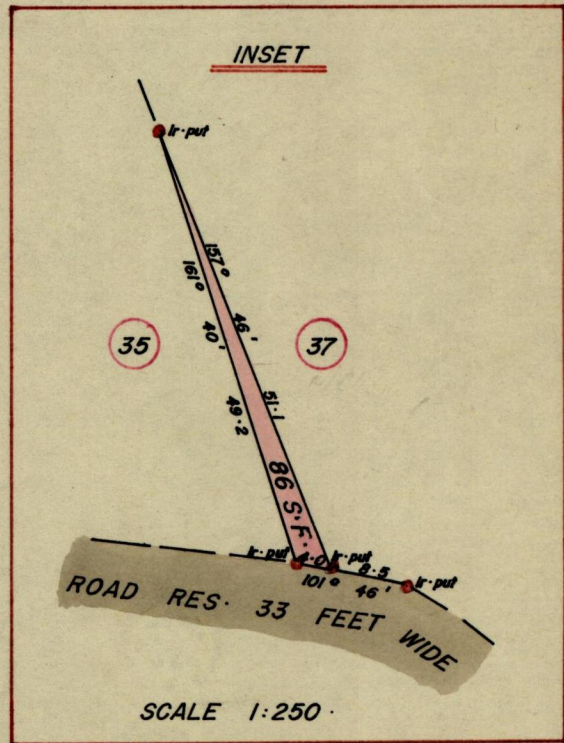
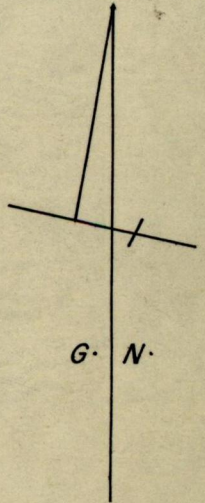
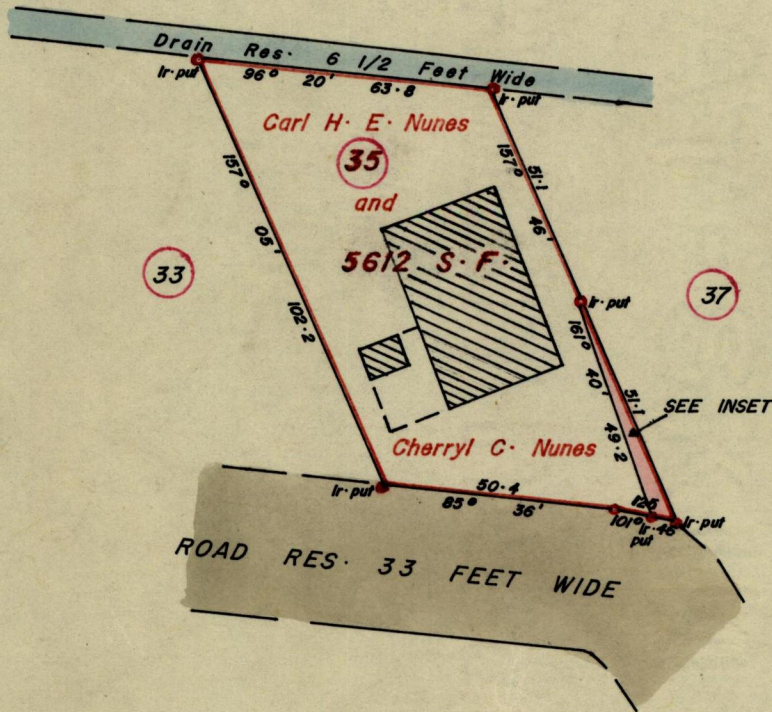
439

Nº 45859

R.P.O. Vol. 2
C.T. Vol. 2242

Fol. 389
Fol. 233

Ward of Arima
County of St. George
Cadastral Sheet B-25-E



Approved

Richard Samuel
25.6.80 Director of Surveys

SCALE 1:500

Note: To obtain compass bearings add/subtract 10 minutes Distances are in Feet
 PLAN of a Parcel of land coloured Pink in the Ward of Arima
 Containing Eighty Six Square Feet
 Surveyed by me, with due authority, in January, 1980.

I certify that I have complied with rule 76 under Section 14 (2) (d) of the Land Surveyors' Ordinance 1952, and that this plan is correct.

Checked by *J. J. W. 25/4/80*

Richard E. Samuel

Entered..... *28th May 1980*

LANDS AND SURVEYORS' VAULT RECORDS

Original in Plan P.A. 107