

35()

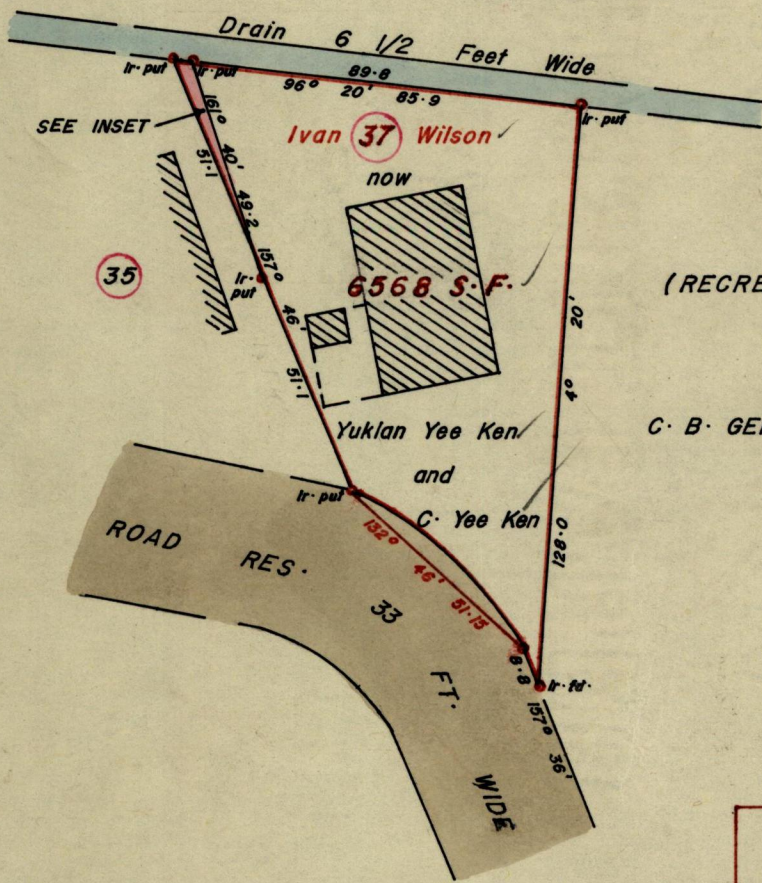
433

Nº 45858

R.P.O. Vol. 2  
C.T. Vol. 2225

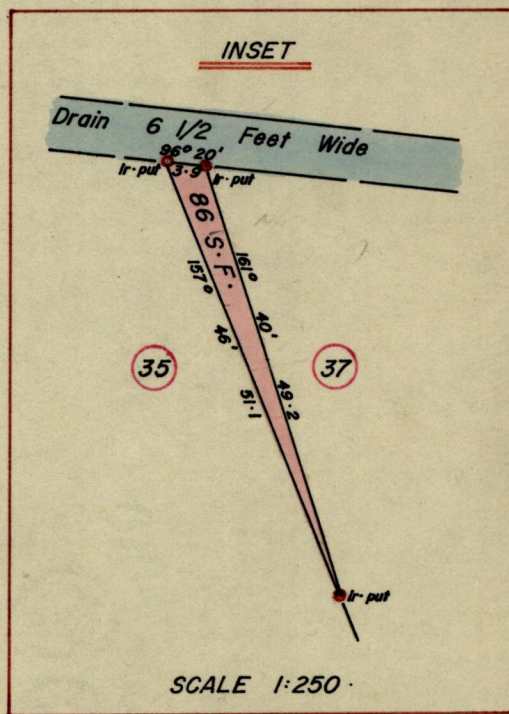
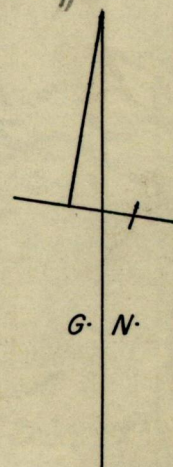
Fol. 389  
Fol. 499

Ward of Arima  
County of St. George  
Cadastral Sheet B. 25. #A



(RECREATION AREA)

C. B. GEMS Dev. Ltd.



SCALE 1:250

SCALE 1:500

Approved

*Richard Samuel*  
 Director of Surveys  
 25.6.80

Note: To obtain compass bearings add/subtract 10 minutes Distances are in Feet

PLAN of a Parcel of land coloured Pink in the Ward of Arima

Containing Eighty Six Square Feet

Surveyed by me, with due authority, in January, 1980

I certify that I have complied with rule 76 under Section 14 (2) (d) of the Land Surveyors' Ordinance 1952, and that this plan is correct.

Checked by *L.J.W. 25/6/80*

*Richard Samuel*

Entered.....

LANDS AND SURVEYS VAULT RECORD  
 Land Surveyor, Trinidad 25<sup>th</sup> May 1980

Original in Plan P.A. 107