

35(1)

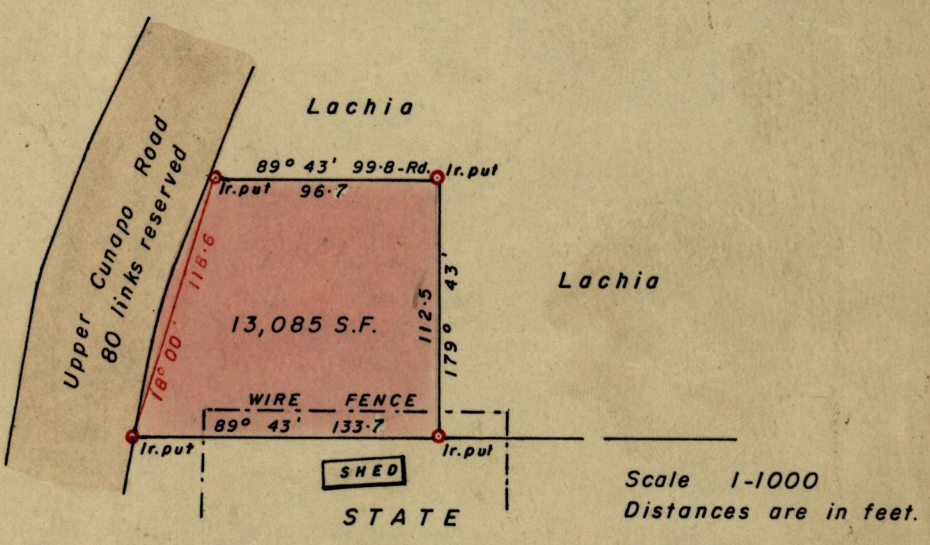
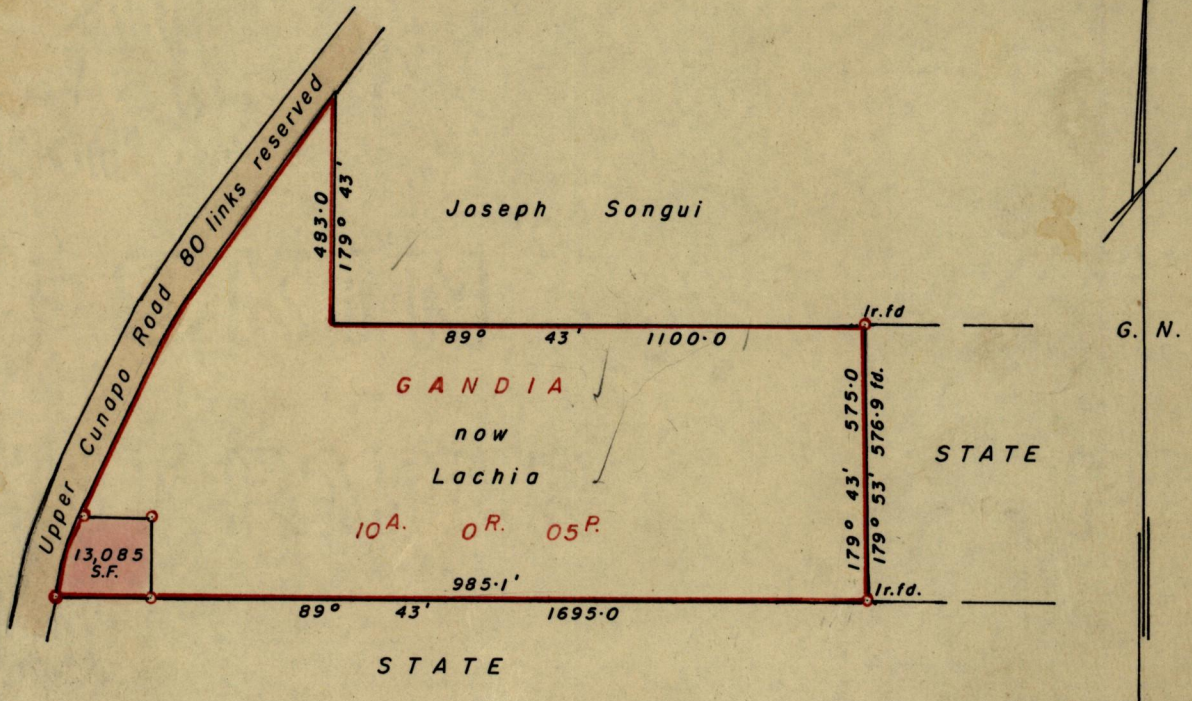
426

Nº 44847

R.P.O. Vol. 16
C.T. Vol. 1540

Fol. 355
Fol. 97

Ward of Turure
County of St. Andrew
Cadastral Sheet E.2.A.8 B.



Approved

John Samuel
Director of Surveys

23.6.80.

SCALE 4 chains to 1 inch.

Note: To obtain compass bearings add ~~minutes~~ 17 minutes Distances are in links.

PLAN of a Parcel of land coloured pink in the Ward of Turure

Containing Thirteen thousand and eighty-five square feet.

Surveyed by me, with due authority, in August 1979

I certify that I have complied with rule 76 under Section 14 (2) (d) of the Land Surveyors' Ordinance 1952, and that this plan is correct.

Checked by *d.f.b. 20/6/80*

John Samuel

Entered

LANDS AND SURVEYS VAULT RECORDS
Land Surveyor, Trinidad
15 OCTOBER 1979

