

350

422

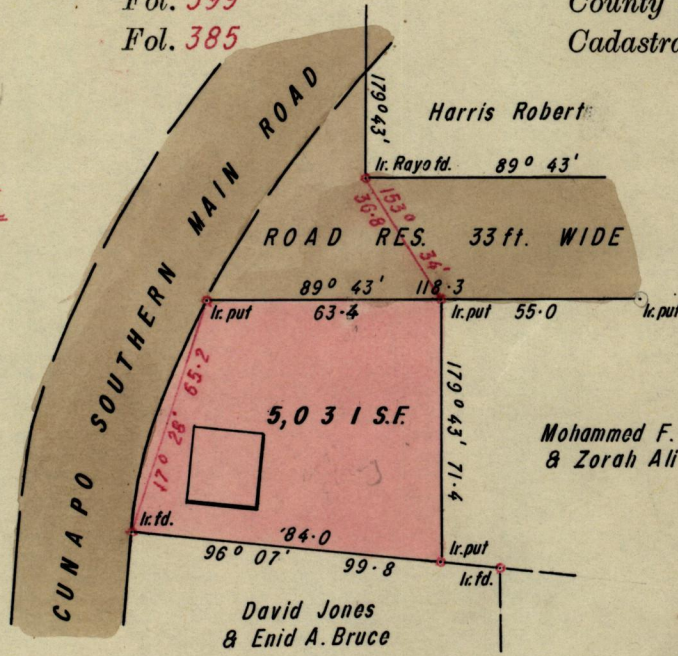
Nº 40212

R.P.O. Vol. 3
C.T. Vol. 1404

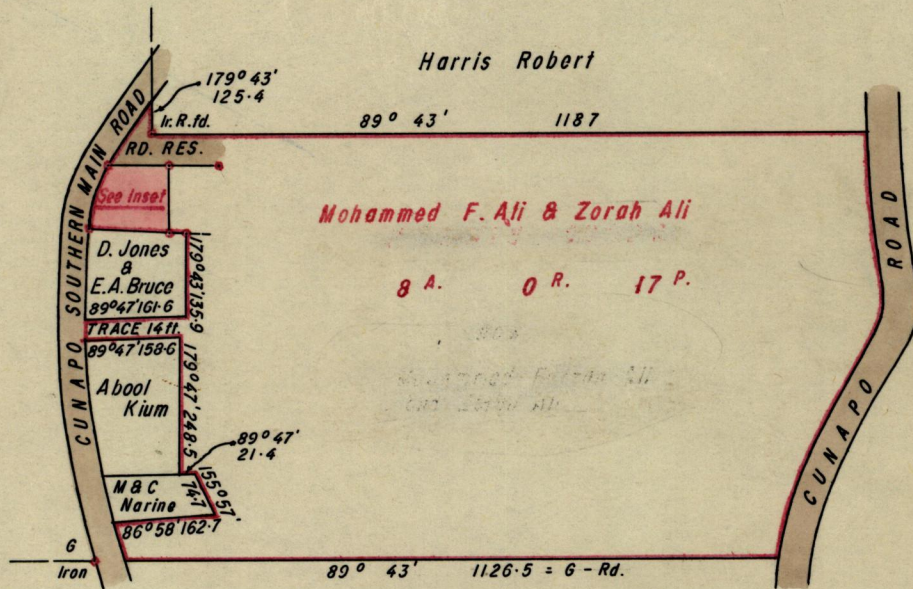
Fol. 399
Fol. 385

Ward of Turure
County of St. Andrew
Cadastral Sheet E.2. A

INSET



SCALE 1:625
Distances are in feet



Joseph Somer

Approved

John Samuel
17.6.79 Director of Surveys

SCALE 1:2500

Note: Bearings based on Solar Observations
To obtain compass bearings add/abstract 17 minutes Distances are in links

PLAN of a Parcel of land coloured pink in the Ward of Turure

Containing five thousand and thirty-one sq. feet

Surveyed by me, with due authority, in Oct. 1979

I certify that I have complied with rule 76 under Section 14 (2) (d) of the Land Surveyors' Ordinance 1952, and that this plan is correct.

Checked by *L. J. N. 17/10* *John Samuel*

Entered..... LANDS AND SURVEYS VAULT RECORDS Land Surveyor, Trinidad..... 6 19.80

Original BK 997 fol 96