

No 26892

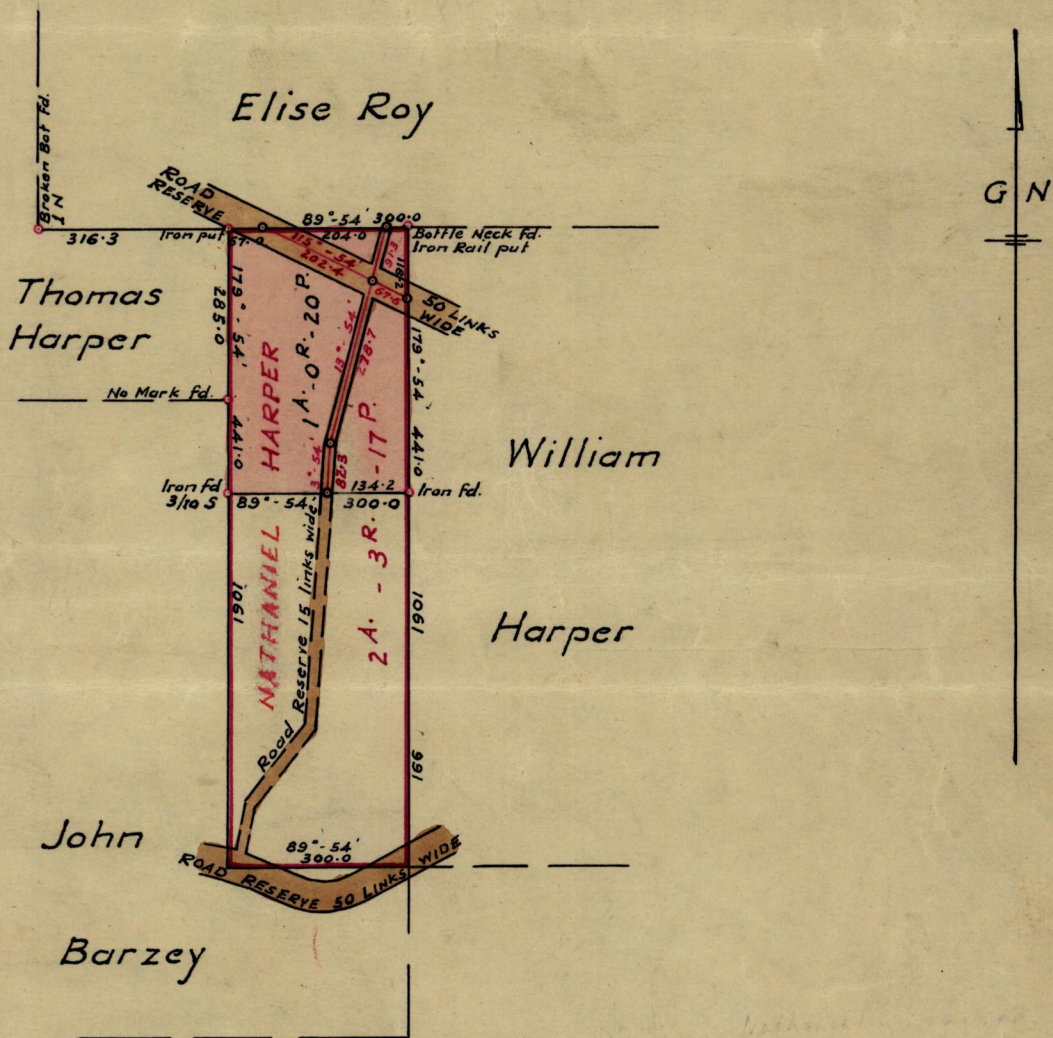
350

349

R.P.O. Vol. 37
C.T. Vol. 1123

Fol. 95
Fol. 245

Ward of Ortoire
County of Victoria
Cadastral Sheet G.5. D



Approved

[Signature]

Director of Surveys

29.v.80

SCALE 1:2500

Note: To obtain compass bearings add/subtract 6 minutes Distances are in Links

PLAN of a Parcel of land coloured pink in the Ward of Ortoire
Containing One acre and twenty perches
Surveyed by me, with due authority, in August 1970

I certify that I have complied with rule 76 under Section 14 (2) (d) of the Land Surveyors' Ordinance 1952, and that this plan is correct.

Checked by *[Signature]*

Entered

Land Surveyor, Trinidad

10th August 1970

Original in BK 881 fol 115

1. 2. 3.

20888 7A

Handwritten notes, possibly bleed-through from the reverse side of the page.

Fol.

Fol.

Vertical handwritten mark or signature.

Faint, illegible text at the bottom of the page, likely bleed-through from the reverse side.