

1007/110

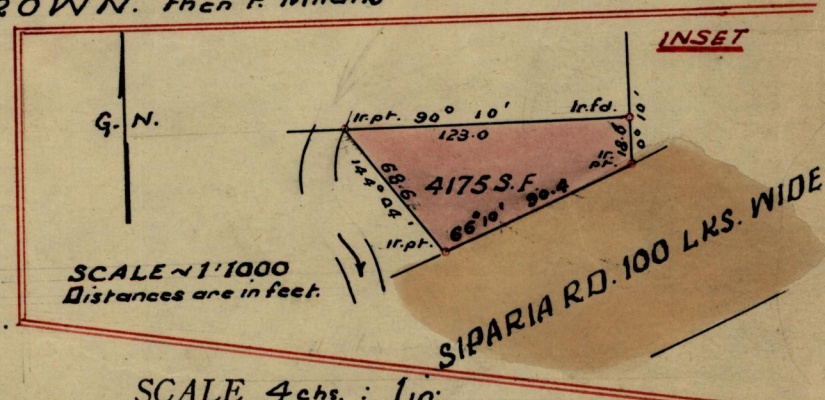
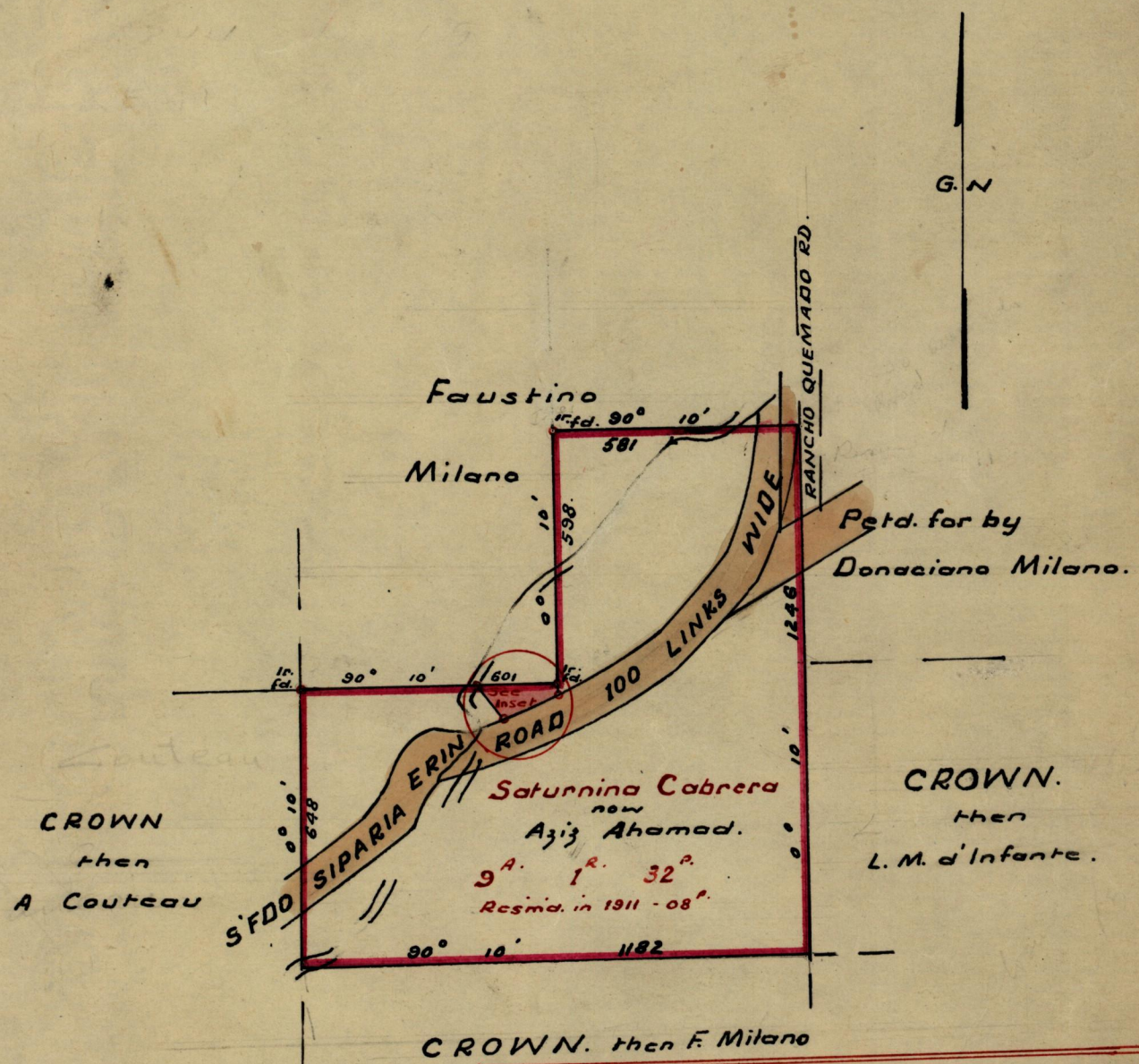
Nº 18631

950

295

R.P.O. Vol. 44 Fol. 37  
C.T. Vol. 1088 Fol. 161

Ward of Erin  
County of St. Patrick.  
Cadastral Sheet F 25 D.



Approved *G. H. Farrell*  
Ag. Director of Surveys  
3.10.66

SCALE 4chs. : 1in.

Note: To obtain compass bearings ~~add~~/subtract 10 minutes Distances are in links.  
PLAN of a Parcel of land coloured pink in the Ward of Erin  
Containing four thousand one hundred and seventy five square feet.  
Surveyed by me, with due authority, in May 1964.

I certify that I have complied with rule 76 under Section 14 (2) (d) of the Land Surveyors' Ordinance 1952, and that this plan is correct.

Checked by *D. 27/9/66* .....  
Entered ..... Land Surveyor, Trinidad *J. R. Gardiner* 2<sup>nd</sup> Sept: 1966