

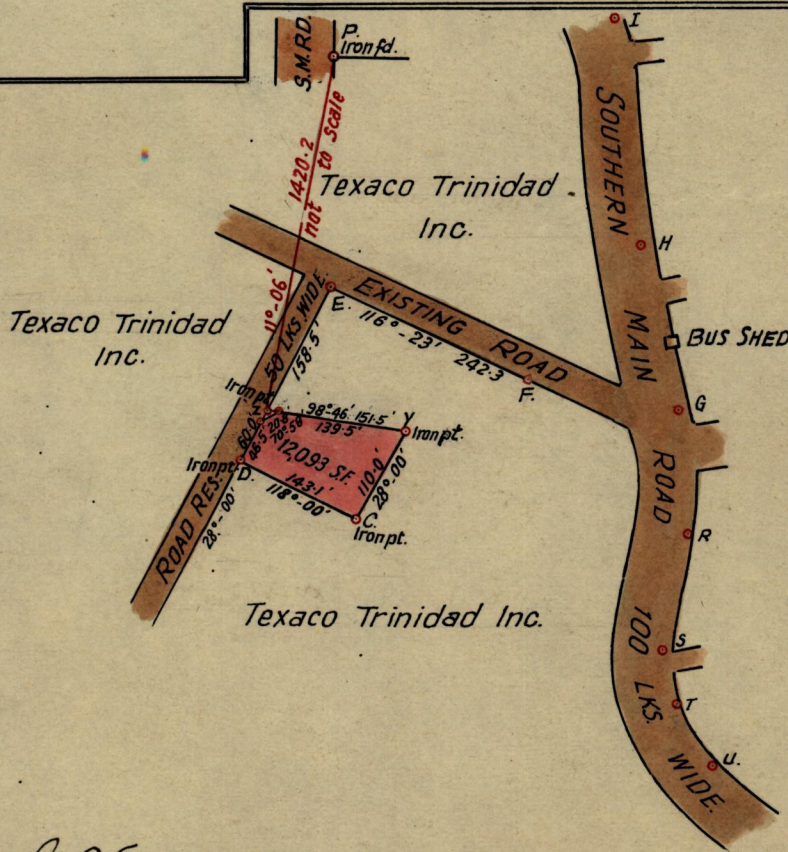
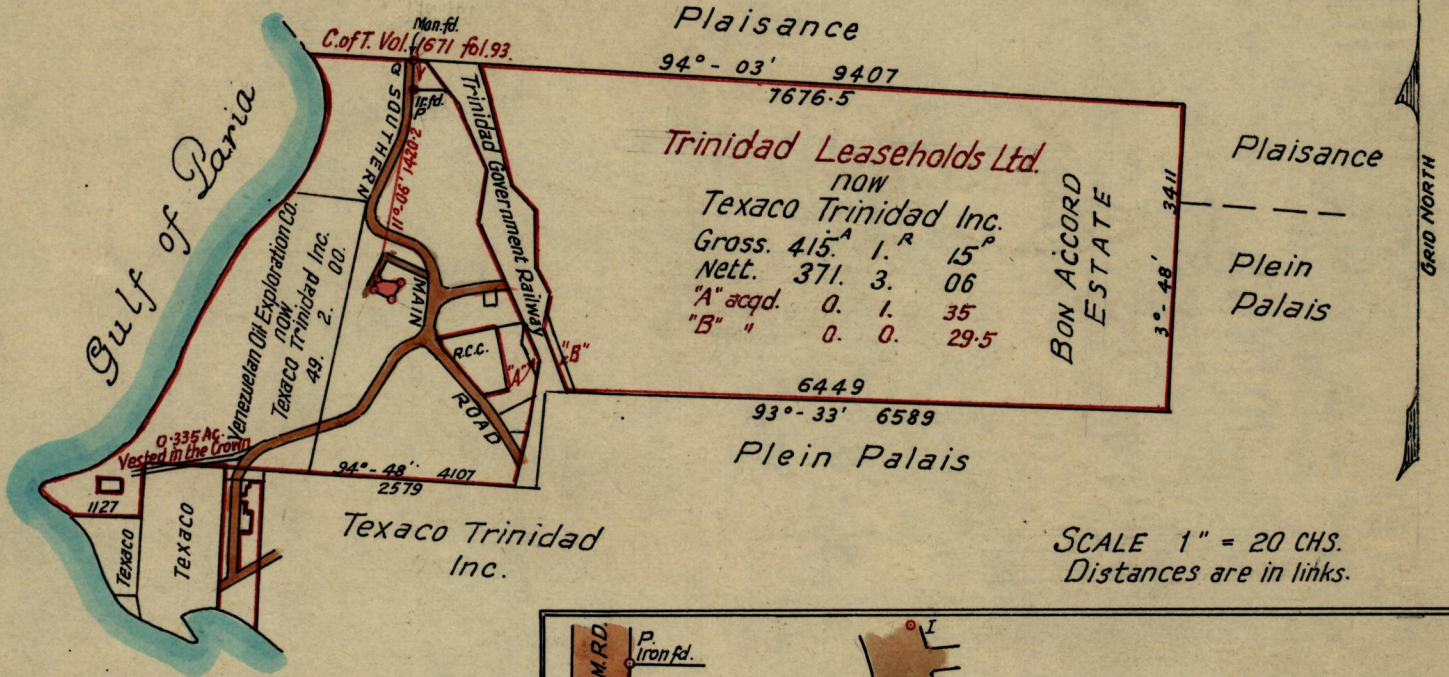
Nº 7424

950

277

R.P.O. Vol. 11 Fol. 53
C.T. Vol. 489 Fol. 435

Ward of Pointe-a-Pierre
County of Victoria
Cadastral Sheet D22 I, J, & M.



STA.	BEARINGS	DISTANCES
F-G	100°-44'	166.6 Ft.
G-H	345-40'	183.3 "
H-I	353°-57'	248.6 "
G-R	176°-17'	135.8 "
R-S	193°-04'	130.5 "
S-T	170°-05'	65.4 "
T-U	145°-58'	78.0 "
P-Q	2°-16'	393.9 "

Approved

G. A. Fanell

Director of Surveys
14-7-67

SCALE
minutes

1: 2500.
Distances are in feet.

Note: To obtain compass bearings ~~add~~ subtract three

PLAN of a Parcel of land coloured pink in the Ward of Pointe-a-Pierre.
Containing Twelve Thousand and ninety three square feet.
Surveyed by me, with due authority, in June, 1967 for Texaco Trinidad Inc.
I certify that I have complied with rule 76 under Section 14 (2) (d) of the Land
Surveyors' Ordinance 1952, and that this plan is correct.

Checked by *WR* 4/7/67

NAL Jones

Entered

Land Surveyor, Trinidad

15th June 1967