

Nº 18447

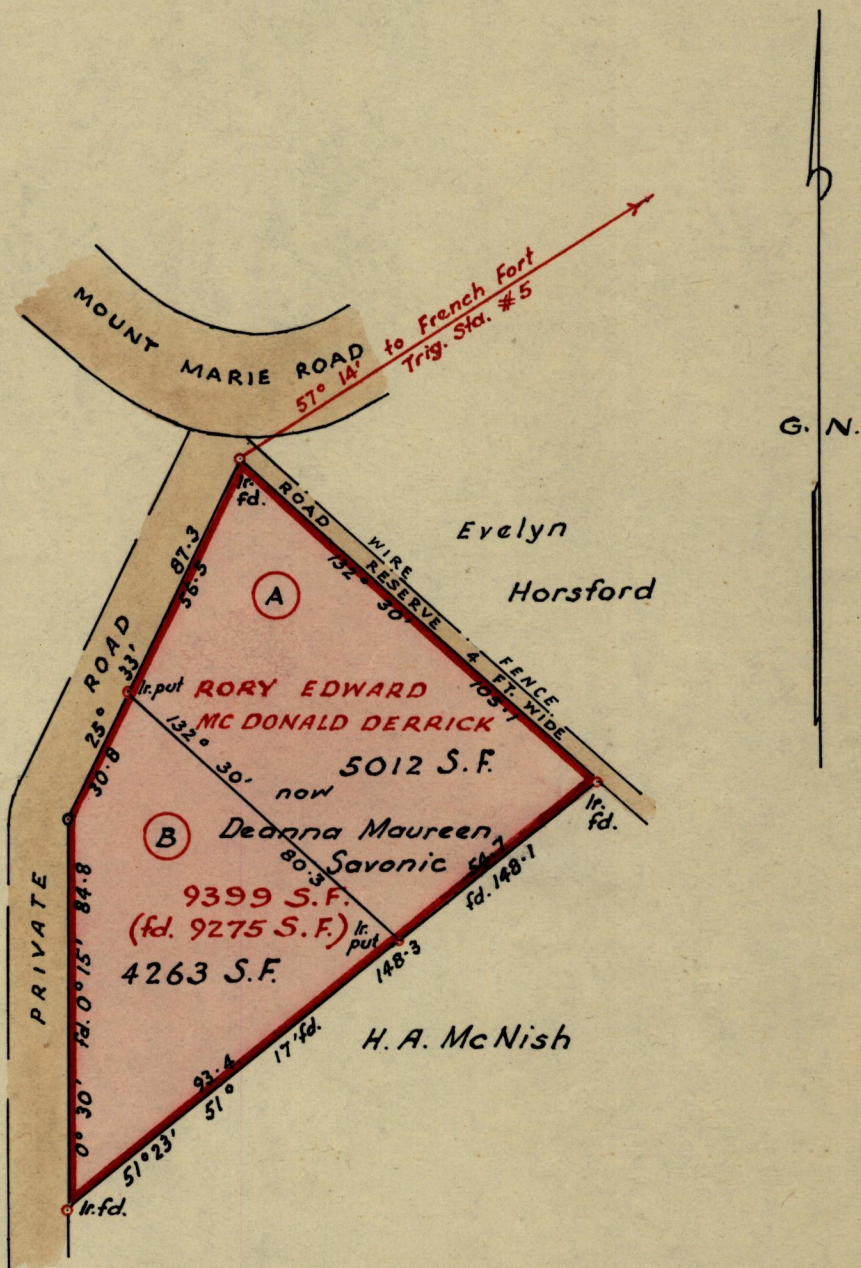
950

268

R.P.O. Vol.  
C.T. Vol. 1665

Fol.  
Fol. 425

Ward of Tobago  
Parish of St. Andrew  
Cadastral Sheet 1.17.K.



Approved *L. A. Farrell*  
 Director of Surveys  
 20.7.68

SCALE ~ 1/500

Note: To obtain <sup>true</sup> ~~compass~~ bearings ~~add~~ subtract 1. minute. Distances are in feet.  
 PLAN of 2 Parcels of land coloured pink in the Ward of Tobago  
 Containing together nine thousand, two hundred & seventy-five square feet  
 Surveyed by me, with due authority, in July 1968.

I certify that I have complied with rule 76 under Section 14 (2) (d) of the Land Surveyors' Ordinance 1952, and that this plan is correct.

Checked by *L. F. W. 17/7/68* ..... *P. Douglas*  
 Entered ..... Land Surveyor, Trinidad *July 15<sup>th</sup> 1968*

976/110