

Nº 8751

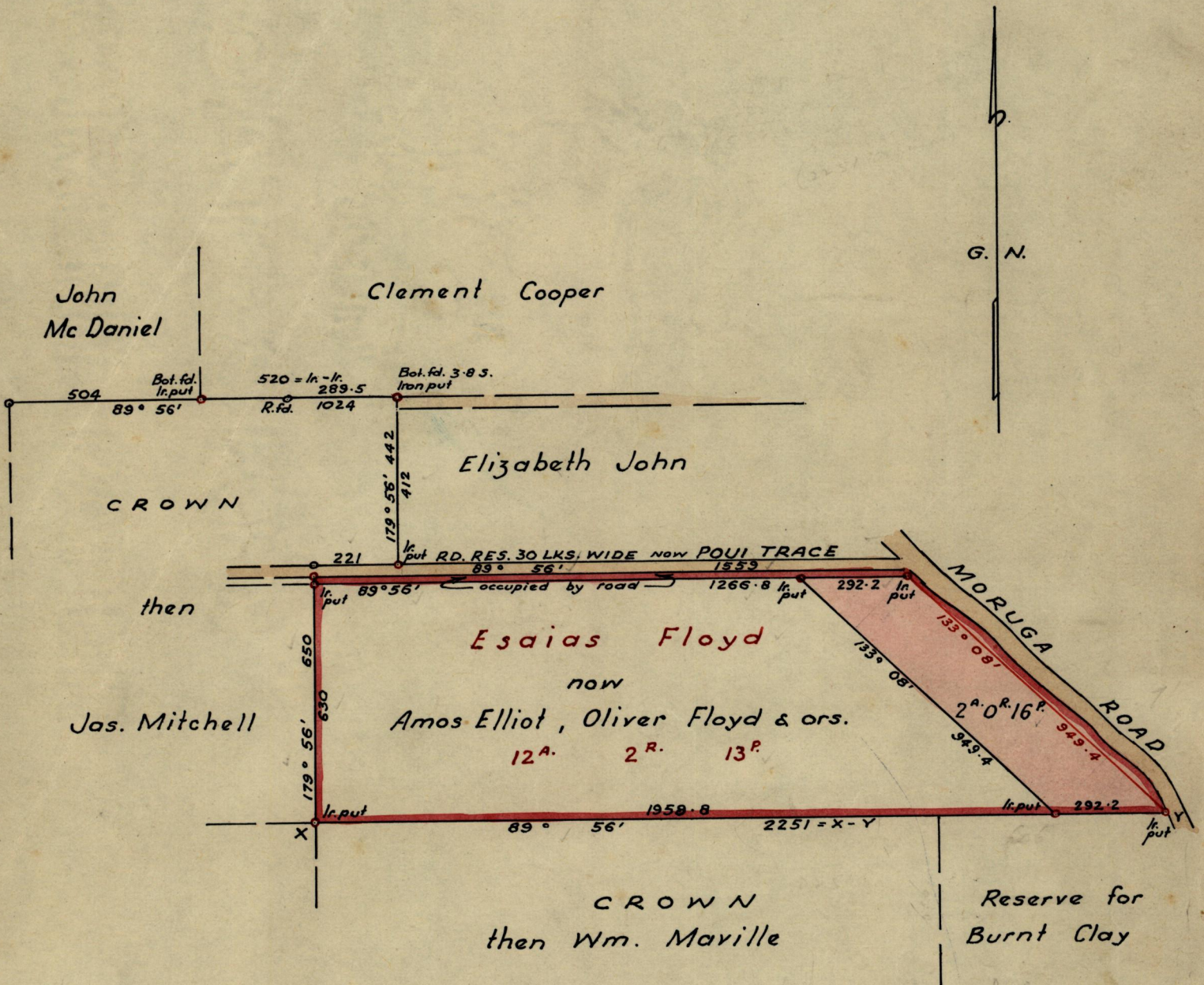
950

242

R.P.O. Vol. 22
C.T. Vol. 1615

Fol. 441
Fol. 139

Ward of Savana Grande
County of Victoria
Cadastral Sheet G. 15. B.



Approved

Lud. E. Farrell

Director of Surveys
22. 5. 63

Note: To obtain compass bearings add ~~subtract~~ 4

SCALE ~ 4 chains to 1 inch
minutes Distances are in links

PLAN of a Parcel of land coloured pink in the Ward of Savana Grande
Containing two acres & sixteen perches
Surveyed by me, with due authority, in March 1963

I certify that I have complied with rule 76 under Section 14 (2) (d) of the Land
Surveyors' Ordinance 1952, and that this plan is correct.

Checked by *[Signature]* 22/5/63

Phil Douglas

Entered

Land Surveyor, Trinidad *April 4th* 19.63

LANDS AND SURVEYS VAULT RECORDS