

No 15359

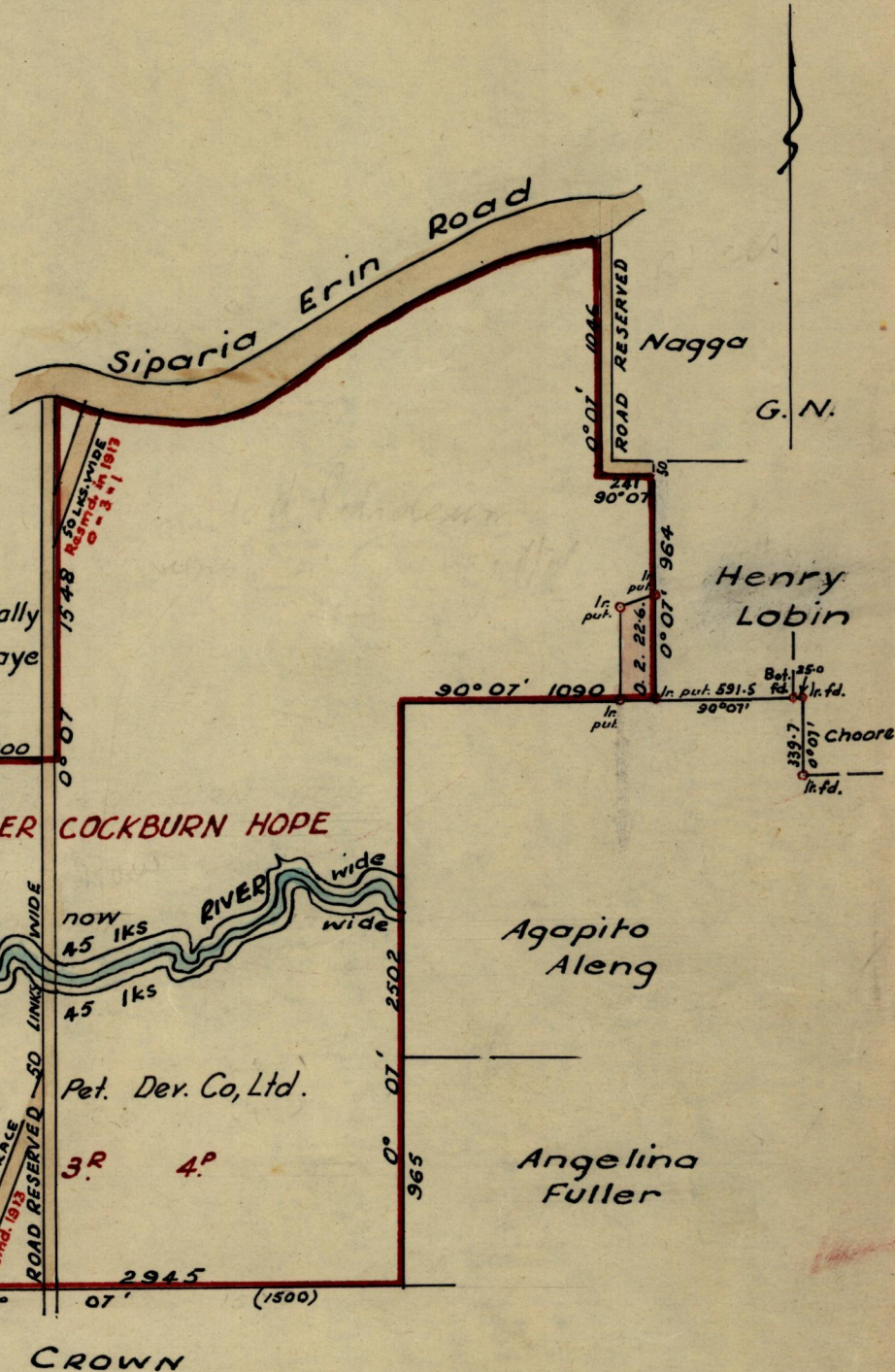
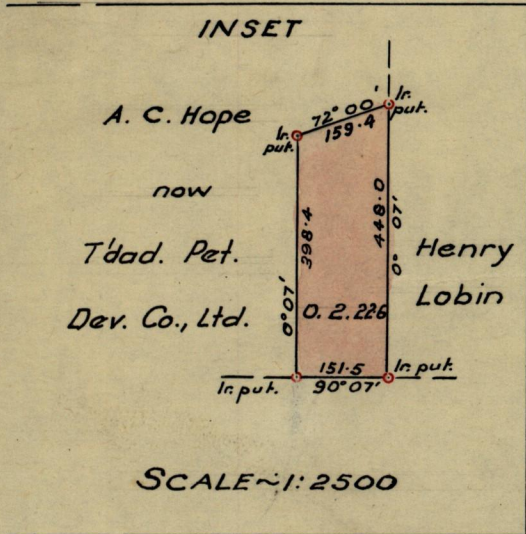
950

238

R.P.O. Vol. 225
C.T. Vol.

Fol 479
Fol

Ward of Erin
County of St. Patrick
Cadastral Sheet G.16. K.



Approved

Fred. E. Lawell

Director of Surveys
20. 4. 65.

SCALE ~ 8 Chains = 1 inch.
Distances are in

Note: To obtain compass bearings ~~add~~/subtract 7 minutes

PLAN of a Parcel of land coloured pink in the Ward of Erin
Containing two roods and twenty-two point six perches
Surveyed by me, with due authority, in February 1965

I certify that I have complied with rule 76 under Section 14 (2) (d) of the Land
Surveyors' Ordinance 1952, and that this plan is correct.

Checked by *N. 10/4/65*

[Signature]
Land Surveyor, Trinidad 22nd March 1965

Entered