

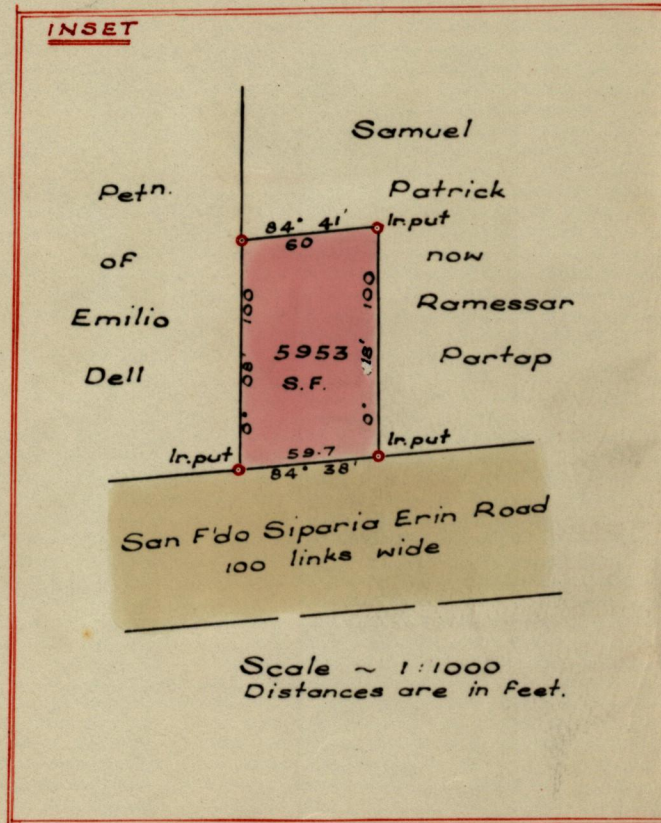
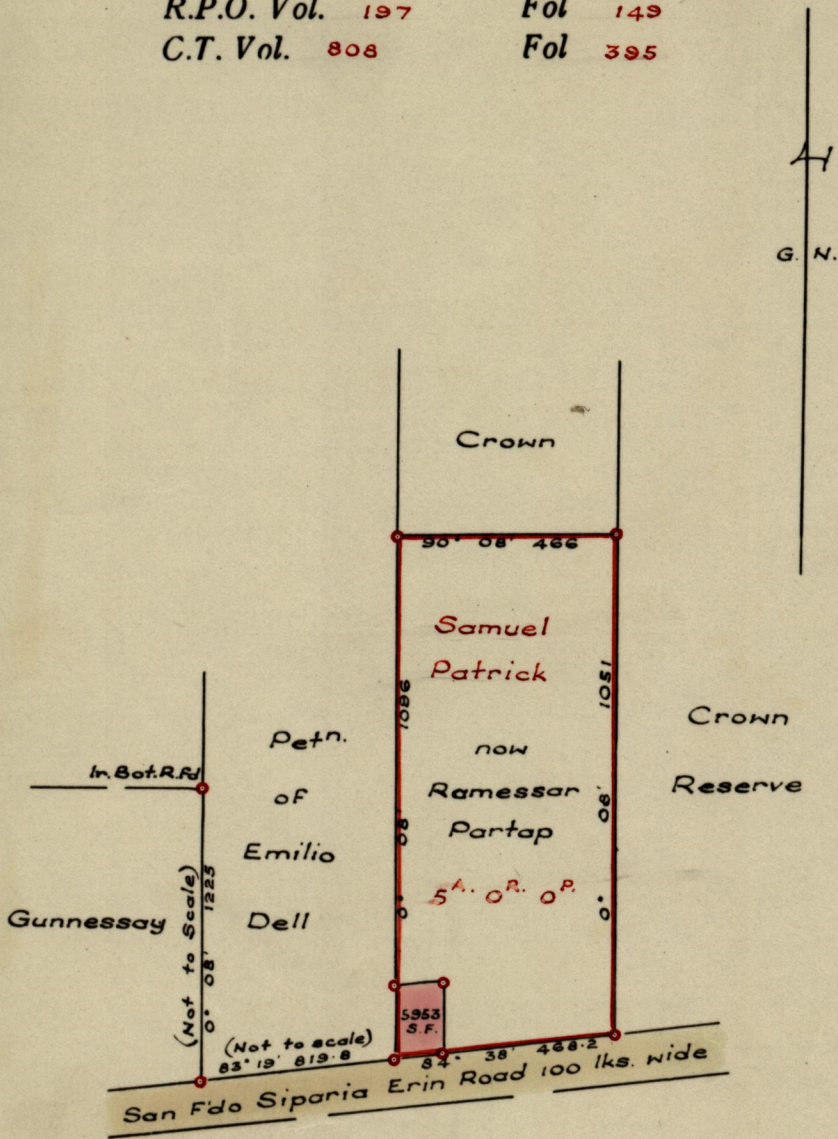
No 11161

950

232

R.P.O. Vol. 197 Fol 149  
C.T. Vol. 808 Fol 395

Ward of Erin  
County of St. Patrick  
Cadastral Sheet G.12.K.



Approved  
*Fred. E. Farrell, F.R.I.C.S.*

Ag Director of Surveys  
18. 2. 64.

SCALE 1 inch = 4 chains  
Distances are in links

Note: To obtain compass bearings add/subtract eight minutes

PLAN of a Parcel of land coloured pink in the Ward of Erin  
Containing Five thousand, nine hundred and Fifty-three square feet.  
Surveyed by me, with due authority, in Nov. 1863, for a lease to R. Subnaik.  
I certify that I have complied with rule 76 under Section 14 (2) (d) of the Land Surveyors' Ordinance 1952, and that this plan is correct.

Checked by *17/2/64*

*Leonard F. Webb*  
25<sup>th</sup> November 63.

Entered .....

Land Surveyor, Trinidad