

Orig - Bk 461 : 90.

L. & S.-54

Nº 28286

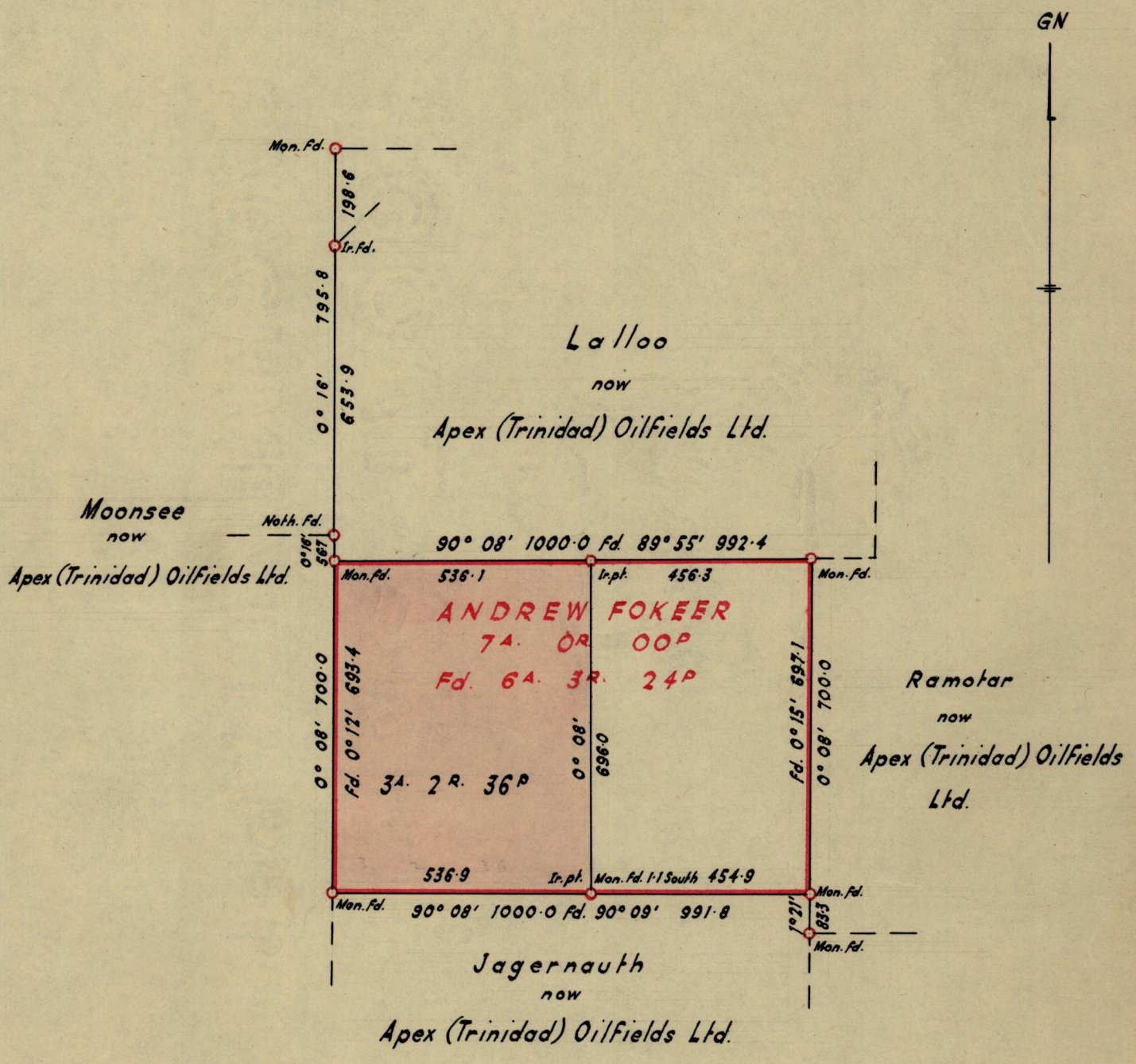
95()

212

R.P.O. Vol. 24  
C.T. Vol.

Fol. 21  
Fol.

Ward of Siparia  
County of St. Patrick  
Cadastral Sheet G.11, L



Approved

*[Signature]*

Director of Surveys

~~7-2~~ 7.3.72

SCALE - 1:2500

Note: To obtain compass bearings ~~add~~/subtract 8 minutes Distances are in Links

PLAN of a Parcel of land coloured Pink in the Ward of Siparia  
Containing Three Acres, Two Roods and Thirty-six Perches  
Surveyed by me, with due authority, in December 1971.

I certify that I have complied with rule 76 under Section 14 (2) (d) of the Land Surveyors' Ordinance 1952, and that this plan is correct.

Checked by *[Signature]*

*[Signature]*

Entered .....

Land Surveyor, Trinidad 13<sup>th</sup> Dec 1971.

LANDS AND SURVEYS VAULT RECORDS