

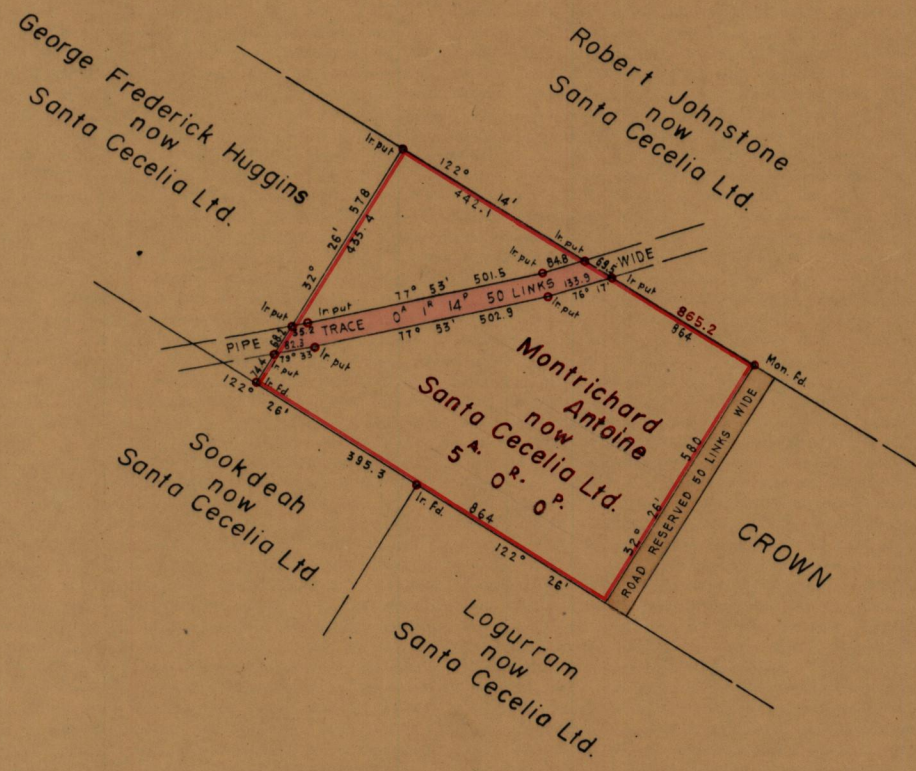
Orig - Bk 466: 75.

Bk 466: 75

R P O Vol. 126 Fol. 451
CT Vol Fol.

95()

Ward of SIPARIA
County of ST. PATRICK
Cadastral Sheet G12K 210



Approved

Fred. E. Savell

Deputy Director of Surveys
29/8/60.

Scale 4 Chains to 1 Inch

Note: To obtain compass bearings ~~add~~/subtract 4 minutes Distances are in Links

PLAN of a Parcel of land coloured Pink in the Ward of SIPARIA
Containing ONE Rood and FOURTEEN Perches
Surveyed by me, with due authority, in 1959 and 1960 for SHELL TRINIDAD LTD.

I certify that I have complied with rule 76 under Section 14 (2)(d) of the Land Surveyor's Ordinance 1952 and that this plan is correct.

Checked *[Signature]* 29.8.60

Entered

[Signature] LAND SURVEYS VAULT RECORDS
Land Surveyor, Trinidad 23rd August 1960