

Orig - BK. 460 : 168.

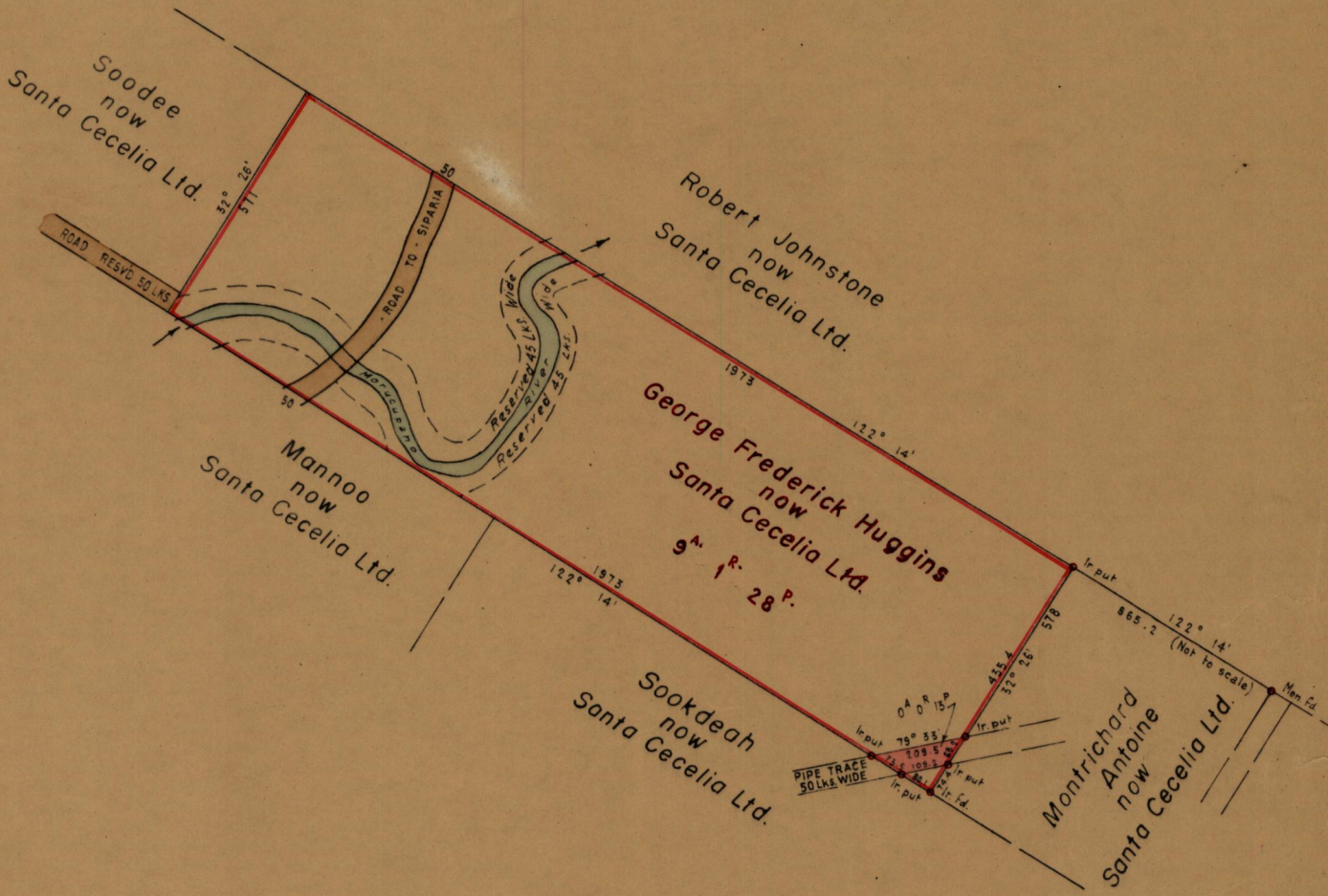
BK 950

R.P.O. Vol. 84 Fol. 393
C.T. Vol. Fol.

Ward of SIPARIA
County of ST. PATRICK
Cadastral Sheet G12K

950

G.N. 209



Approved

Fred. E. Farrell
Deputy Director of Surveys
29/8/60

Scale 4 Chains to 1 Inch

Note: To obtain compass bearings ~~add~~ subtract 4 minutes Distances are in Links

PLAN of a Parcel of land coloured Pink in the Ward of SIPARIA
Containing THIRTEEN Perches

Surveyed by me, with due authority, in 1959 and 1960 for SHELL TRINIDAD LTD.

I certify that I have complied with rule 76 under Section 14 (2) (d) of the Land Surveyor's Ordinance 1952 and that this plan is correct.

Checked *[Signature]* 29.8.60

Entered

Vernon Howard
Land Surveyor, Trinidad 23rd August 1960

DEEDS AND SURVEYS FAULT RECORDS