

Nº 8190

950

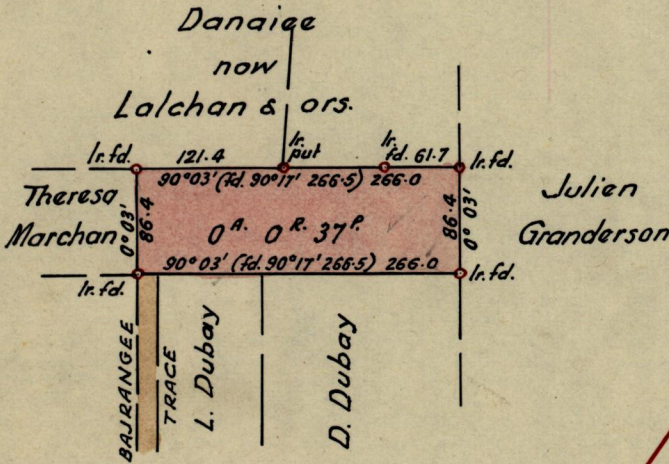
197

R.P.O. Vol. C.T. Vol. 1358

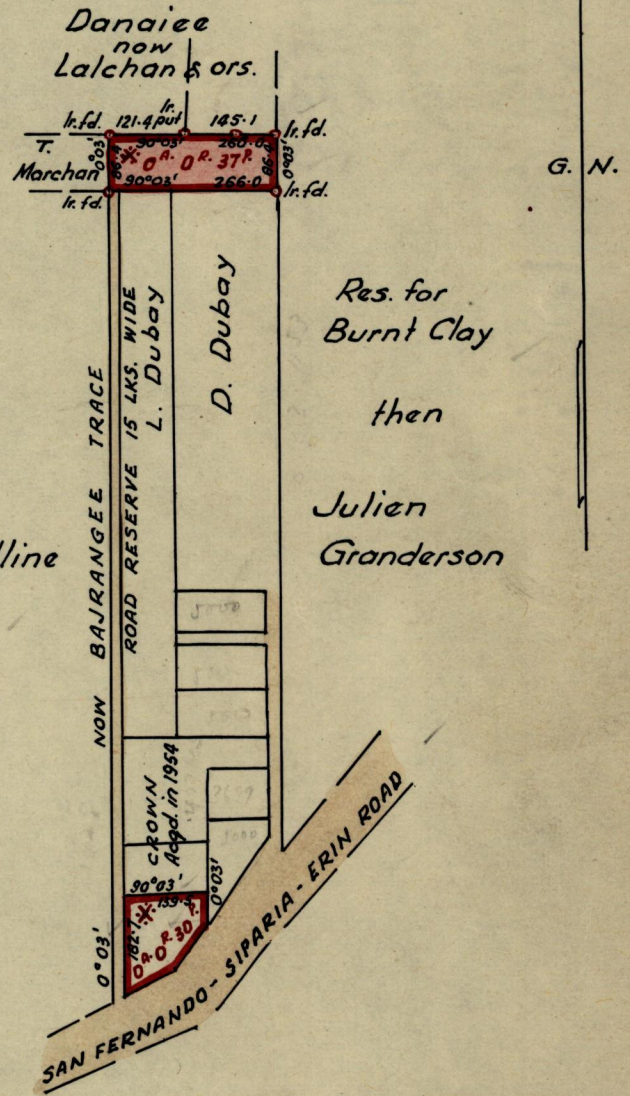
Fol. 289

Ward of Siparia  
County of St. Patrick  
Cadastral Sheet G.12.P  
63E

INSET



Scale ~ 1/1250  
Distances are in links.



Asgaralline Syne

\* Maniram Dubay  
0A. 0R. 37P &  
0A. 0R. 30P

Approved

*W. Lyden*

Director of Surveys  
12.5.62.

Note: To obtain compass bearings add/subtract 3

SCALE ~ 1/2500  
minutes Distances are in links

PLAN of a Parcel of land coloured pink  
Containing thirty-seven perches

in the Ward of Siparia

Surveyed by me, with due authority, in April 1962 for T'dad. & Tobago Elec. Comm.

I certify that I have complied with rule 76 under Section 14 (2) (d) of the Land Surveyors' Ordinance 1952, and that this plan is correct.

Checked by..... 10.5.62.:

*Phil. Douglas*

Entered .....

Land Surveyor, Trinidad May 2nd 1962