

No 25941

950

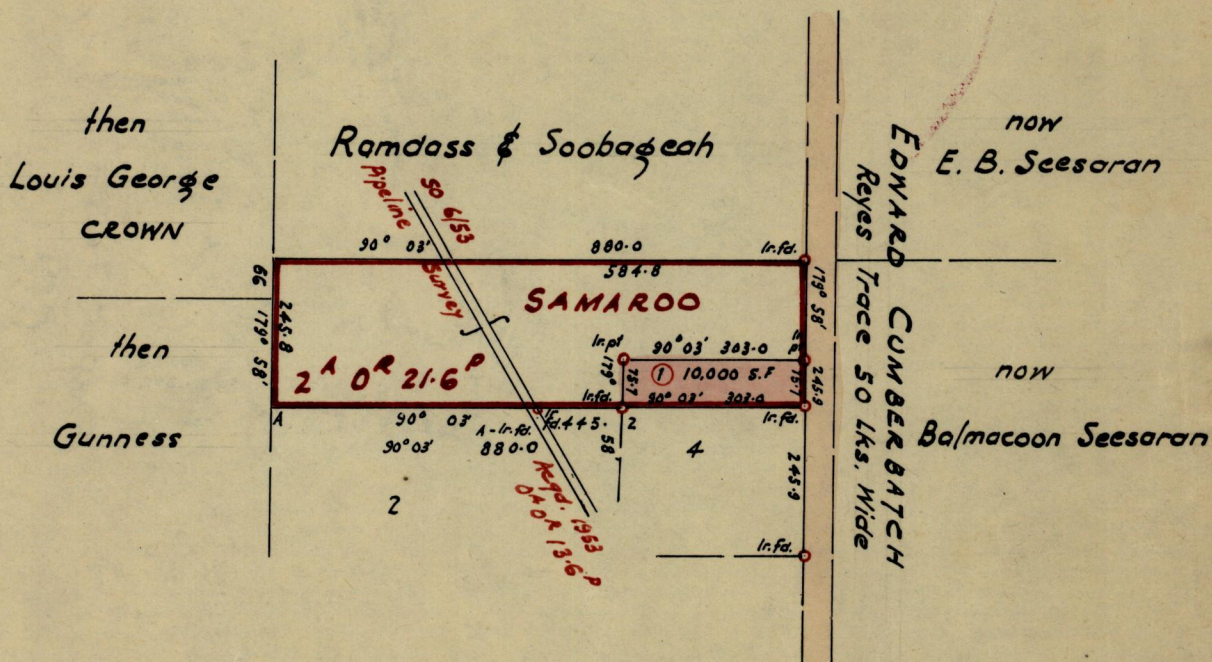
192

R.P.O. Vol. 114
C.T. Vol. 292
1861

Fol. 633
Fol. 441
17

Ward of Siparia
County of St. Patrick
Cadastral Sheet G.12.P

G N



Approved

L. H. Faneil
Director of Surveys
18.6.70

SCALE 1:2500

Note: To obtain compass bearings ~~add~~/subtract 3 minutes Distances are in Links

PLAN of a Parcel of land coloured pink in the Ward of Siparia
Containing Ten thousand sq. ft.

Surveyed by me, with due authority, in August 1969

I certify that I have complied with rule 76 under Section 14 (2) (d) of the Land Surveyors' Ordinance 1952, and that this plan is correct.

Checked by *L. J. W. 16/6/70*

L. H. Faneil

Entered

Land Surveyor, Trinidad *29th May 1970*