

No 22652

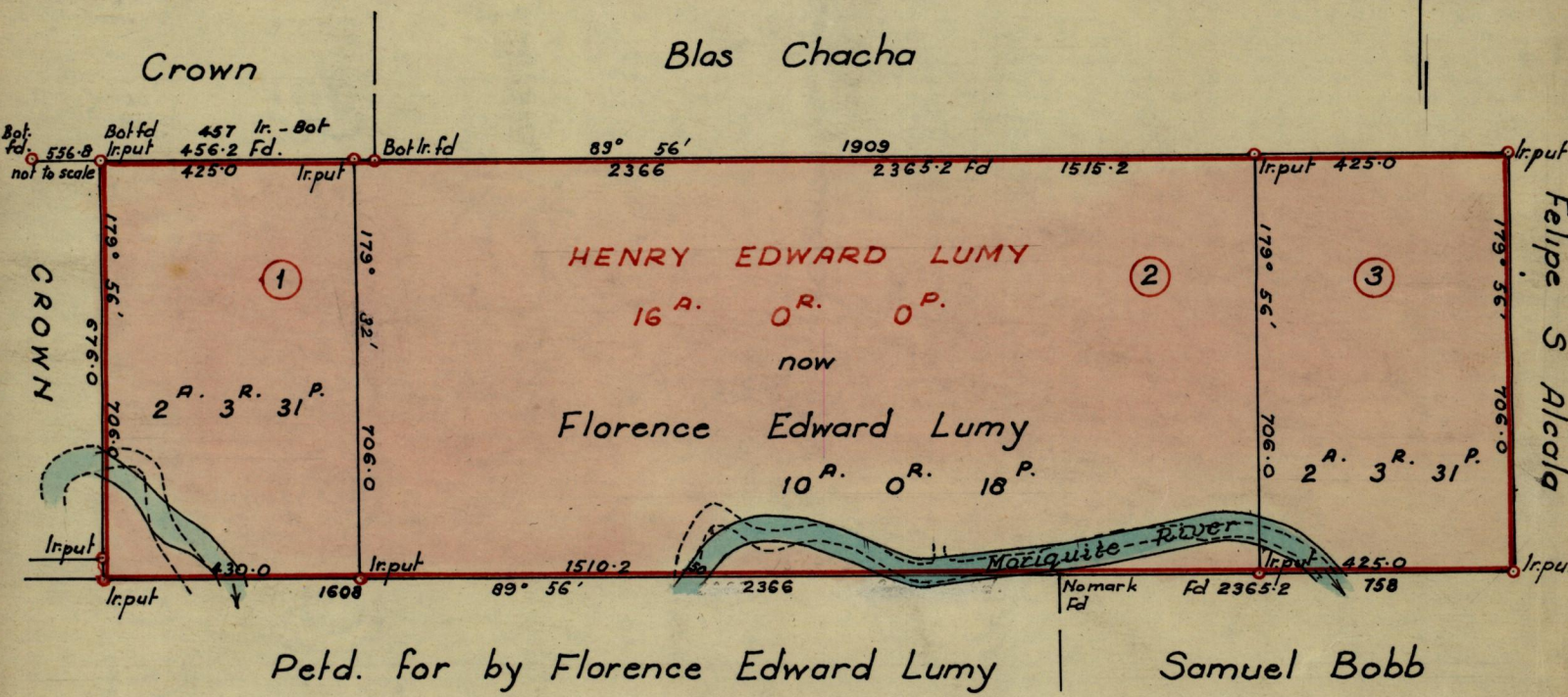
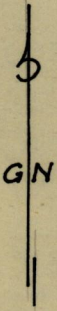
950

178

R.P.O. Vol. 18
C.T. Vol. 913

Fol. 299
Fol. 143

Ward of Moruga
County of Victoria
Cadastral Sheet G20k



Note. Dotted line represents present course of river.

Approved

L. J. Farrell
Director of Surveys
7-3-72

SCALE 1:2500

Note: To obtain compass bearings add/subtract 4 minutes Distances are in Links

PLAN of 3 Parcels of land coloured pink in the Ward of Moruga
Containing together sixteen acres
Surveyed by me, with due authority, in July 1969

I certify that I have complied with rule 76 under Section 14 (2) (d) of the Land
Surveyors' Ordinance 1952, and that this plan is correct.

Checked by *L. J. W. 6/3/72*

Hugo Somar Singh

Entered

Land Surveyor, Trinidad 20.10.1969