

Orig - Bk 397:266

L. & S.-54

No 30676

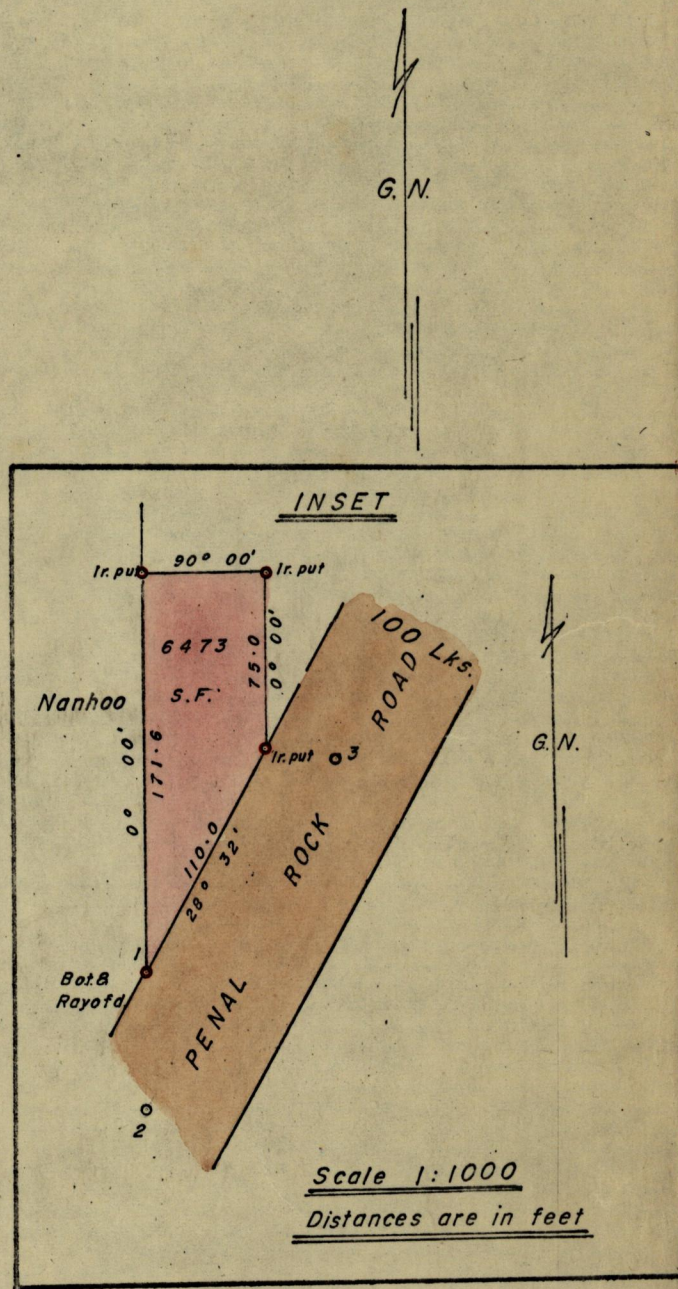
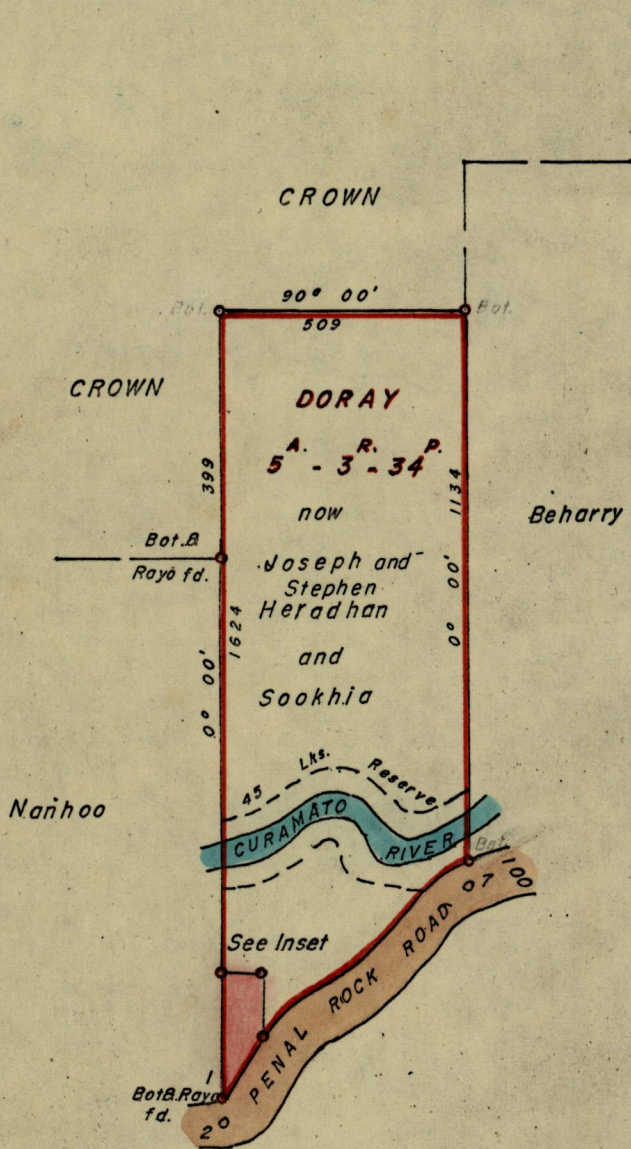
950

172

R.P.O. Vol 145
C.T. Vol. 905

Fol. 35
Fol. 173

Ward of Siparia
County of St. Patrick
Cadastral Sheet G.18.H.



Approved

L.H. Gamell

Director of Surveys
12.6.71

SCALE 4 Chains = 1 Inch
Distances are in links

Note: To obtain compass bearings add/subtract 0 minutes

PLAN of a Parcel of land coloured pink in the Ward of Siparia
Containing Six thousand, four hundred and seventy-three square feet
Surveyed by me, with due authority, in April 1971.

I certify that I have complied with rule 76 under Section 14 (2) (d) of the Land
Surveyors' Ordinance 1952, and that this plan is correct.

Checked by *L.H. Gamell 12/6/71*

Winston Keece

Entered

Land Surveyor, Trinidad *Winston Keece* 1971

LANDS AND SURVEYS VAULT RECORDS