

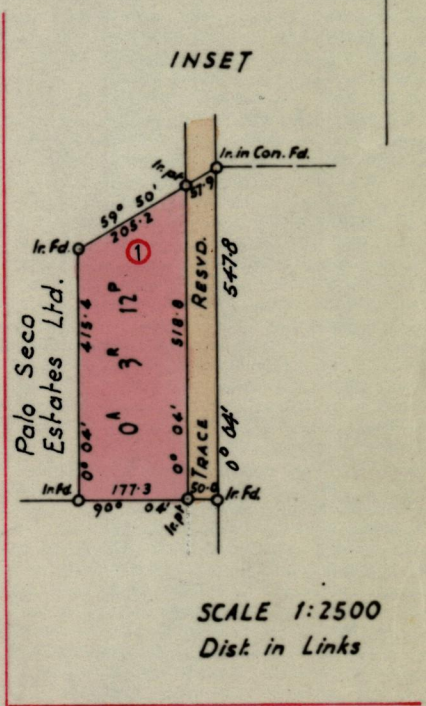
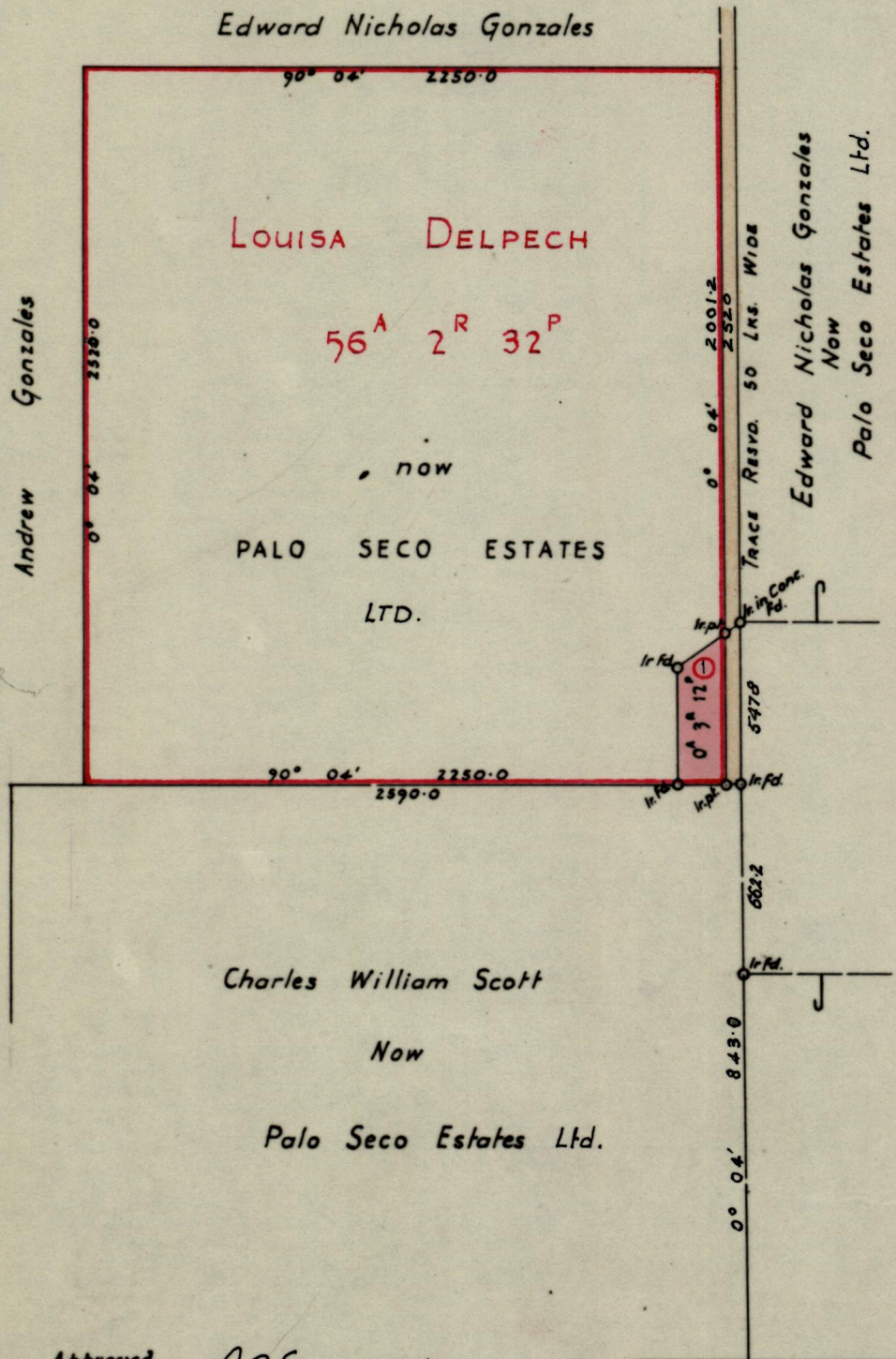
Nº 20185

95()

157

R.P.O. Vol. 166 Fol. 257
C.T. Vol. Fol.

Ward of Siparia
County of St. Patrick
Cadastral Sheet G.17.K



Approved *R.A. Fanell*
Director of Surveys
28.9.67

SCALE 1:5000

Note: To obtain compass bearings ~~add~~ subtract 4 minutes Distances are in Links

PLAN of a Parcel of land coloured pink in the Ward of Siparia
Containing Three roods twelve perches.
Surveyed by me, with due authority, in May 1967
I certify that I have complied with rule 76 under Section 14 (2) (d) of the Land Surveyors' Ordinance 1952, and that this plan is correct.

Checked by *R. 27/9/15*
Entered
Land Surveyor, Trinidad *S. H. Stout* 26th June 1967