

No 21166

950

151

R.P.O. Vol.
C.T. Vol. 1115
Rem. Portion in
Vol. 1576 fol. 407

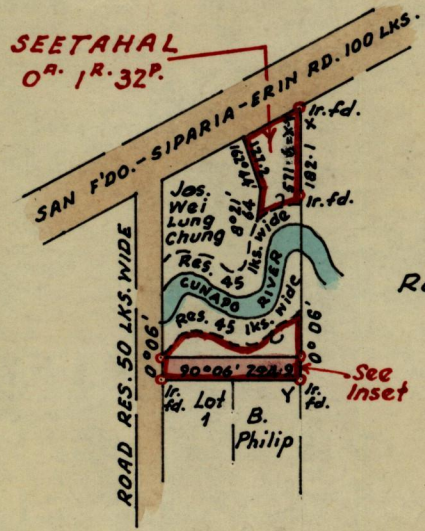
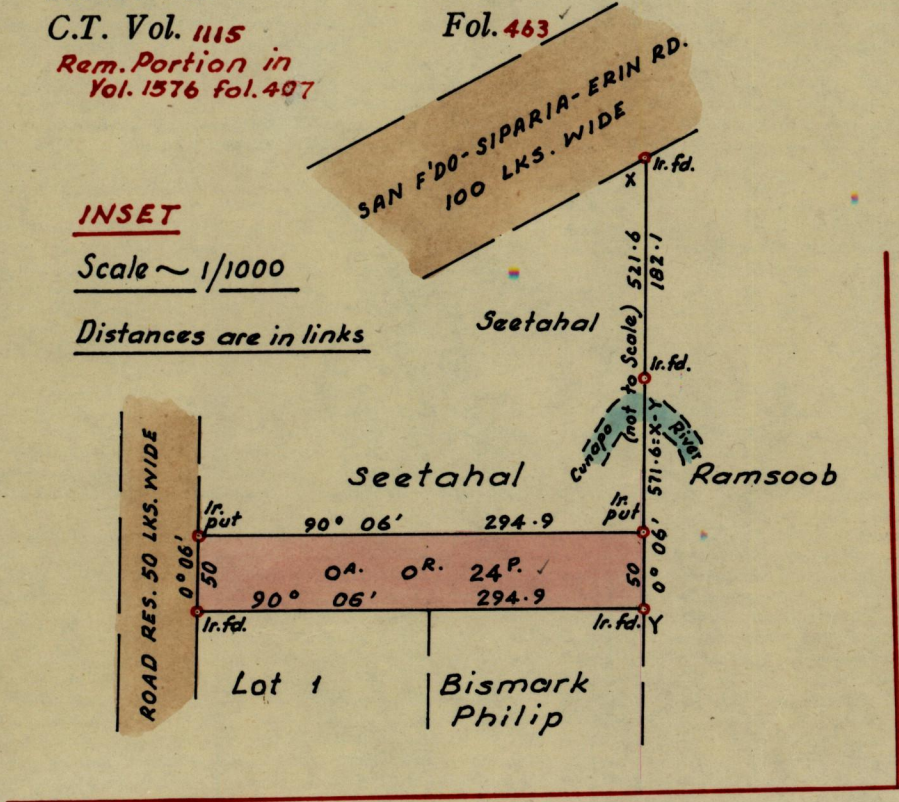
Fol.
Fol. 463

Ward of Siparia
County of St. Patrick
Cadastral Sheet G.17. A

INSET

Scale ~ 1/1000

Distances are in links



Approved

Patience

Director of Surveys
8.9.67

SCALE ~ 4 chains to 1 inch

Distances are in links

Note: To obtain compass bearings ~~add~~ subtract 6 minutes

PLAN of a Parcel of land coloured pink in the Ward of Siparia
Containing twenty-four perches
Surveyed by me, with due authority, in August 1967

I certify that I have complied with rule 76 under Section 14 (2) (d) of the Land Surveyors' Ordinance 1952, and that this plan is correct.

Checked by *19/9/67*

H. Alliee

Entered

Land Surveyor, Trinidad 20th August 1967