

Nº 11932

95(1)

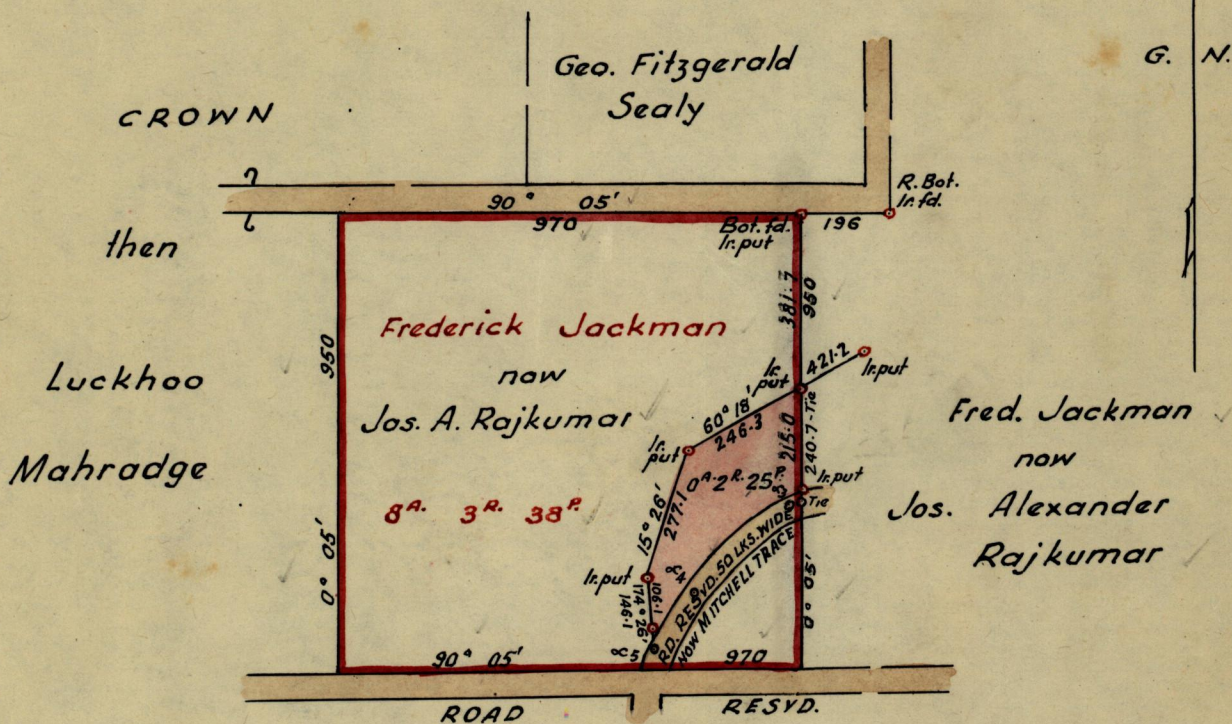
15(1)

R.P.O. Vol. 241
C.T. Vol. 705

Fol 189
Fol 447

Ward of Siparia
County of St. Patrick
Cadastral Sheet G.17.F.

REFERENCE			
Sta.	Bearings	Distance	Sta.
α ₅	35° 08'	140.0	α ₄
α ₄	46° 59'	275.5	α ₃
α ₃	69° 57'	12.7	Tie



Approved

Fred. E. Farrell

Director of Surveys
2. xii. 63

SCALE ~ 4 chains to 1 inch
minutes Distances are in links

Note: To obtain compass bearings ~~add~~ subtract 5

PLAN of a Parcel of land coloured pink in the Ward of Siparia

Containing two roods & twenty-five perches

Surveyed by me, with due authority, in Aug. 1963

I certify that I have complied with rule 76 under Section 14 (2) (d) of the Land Surveyors' Ordinance 1952, and that this plan is correct.

Checked by *E. 2/12/63*

Phil Douglas

Entered

Land Surveyor, Trinidad *Nov. 23rd 1963*