

Nº 11628

95()

149

R.P.O. Vol. 160

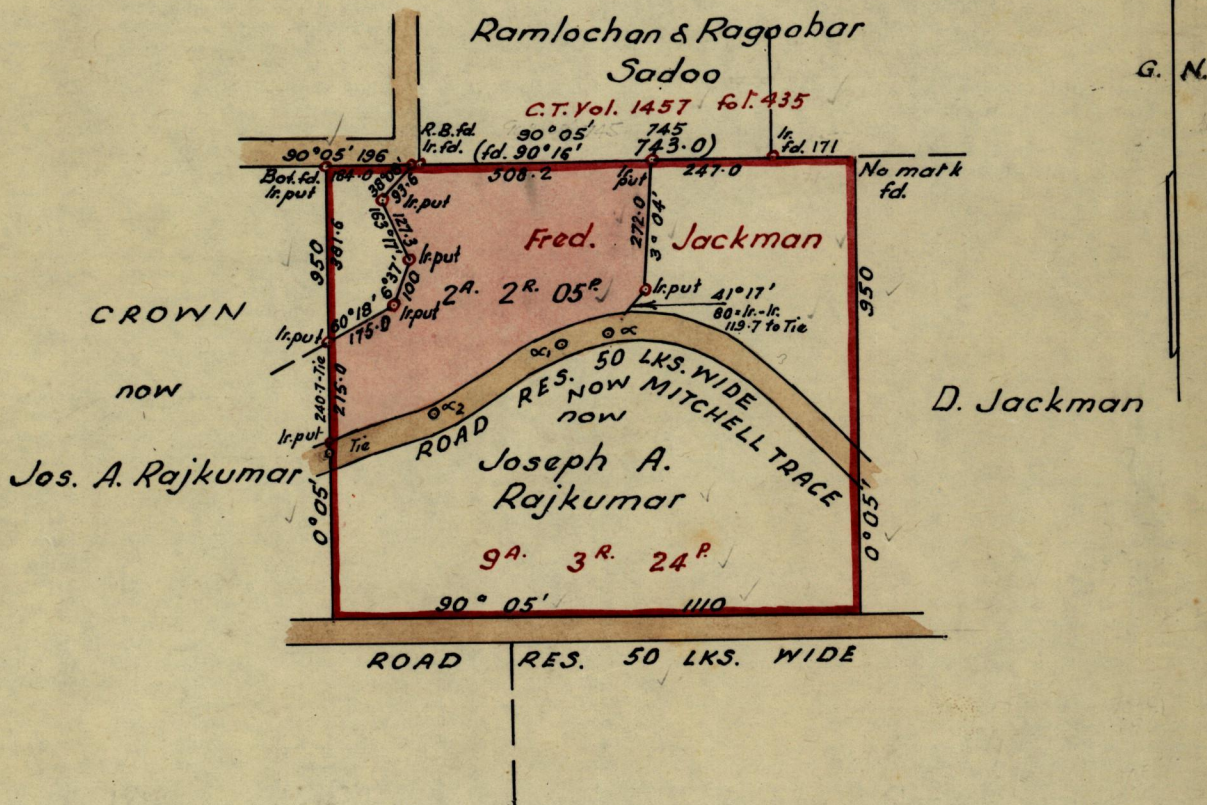
Fol 295

C.T. Vol. 705

Fol 447

Ward of Siparia
County of St. Patrick
Cadastral Sheet G.17.F

REFERENCE			
Sta:	Bearings	Distance	Sta:
Tie	69° 57'	229.1	α ₂
α ₂	62° 15'	303.7	α ₁
α ₁	75° 05'	98.5	α



Approved

Fred. E. Farrell

By Director of Surveys
2. xii. 63

Note: To obtain compass bearings add/subtract 5 minutes

SCALE ~ 4 chains to 1 inch
Distances are in links.

PLAN of a Parcel of land coloured pink in the Ward of Siparia
Containing two acres, two roads & five perches
Surveyed by me, with due authority, in Aug. 1963.

I certify that I have complied with rule 76 under Section 14 (2) (d) of the Land Surveyors' Ordinance 1952, and that this plan is correct.

Checked by: *E. 2/12/63*

Phil Douglas

Entered

Land Surveyor, Trinidad Nov. 23rd 19.63