

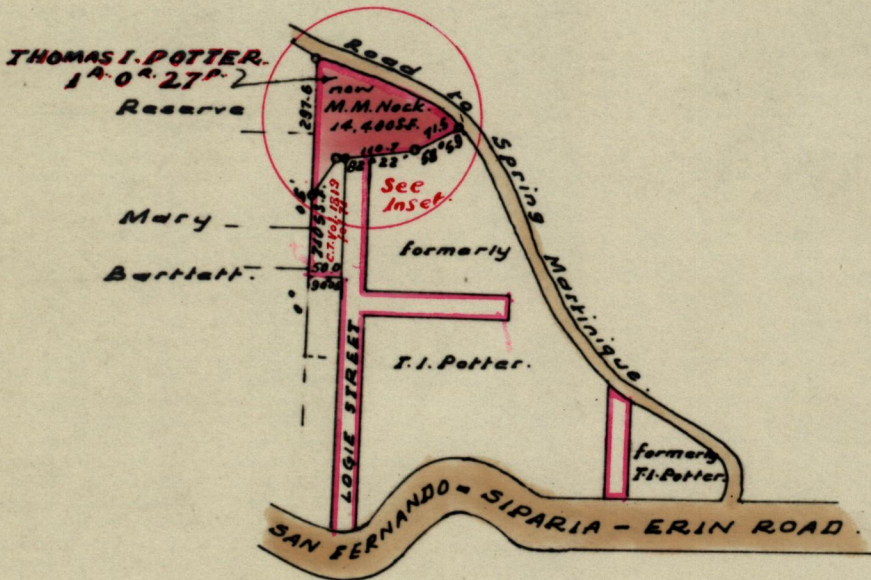
No 22389

950

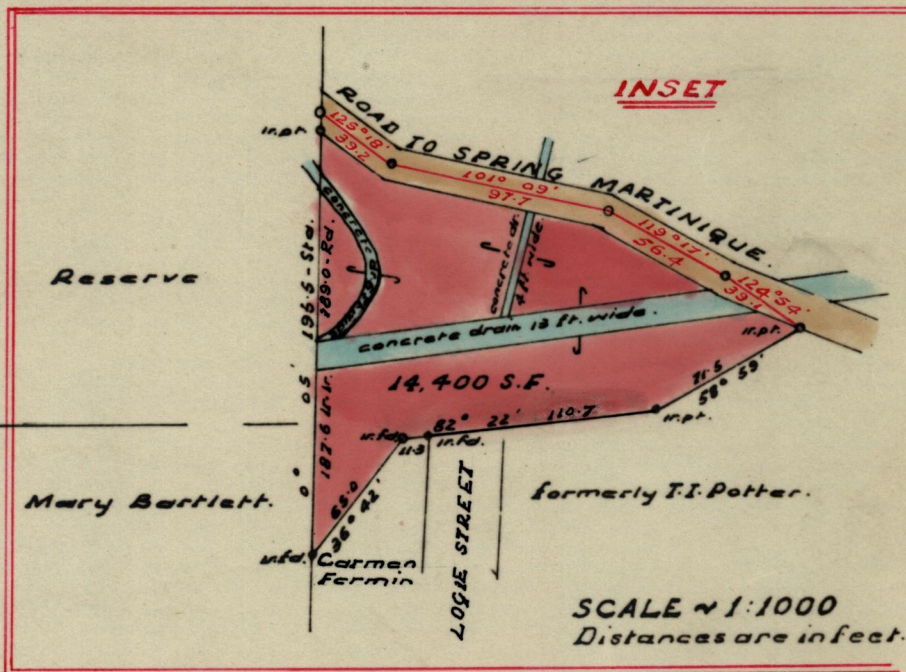
147

R.P.O. Vol. Fol.
C.T. Vol. 493 Fol. 393.
Rem. Portion. Vol. 1160. fol. 415.

Ward of Siparia
County of St. Patrick
Cadastral Sheet G.17.B.



G.N.



Approved

D.A. Farrell

Director of Surveys

13.9.68

SCALE 4chs. : 1 in.

Note: To obtain compass bearings ~~add~~ subtract 5 minutes Distances are in feet.

PLAN of a Parcel of land coloured pink in the Ward of Siparia
Containing fourteen thousand four hundred square feet.
Surveyed by me, with due authority, in January 1968.

I certify that I have complied with rule 76 under Section 14 (2) (d) of the Land Surveyors' Ordinance 1952, and that this plan is correct.

Checked by *RR. 11/9/68*

J.R. Gardiner

Entered

Land Surveyor, Trinidad

12th July 1968.