

Nº 6717

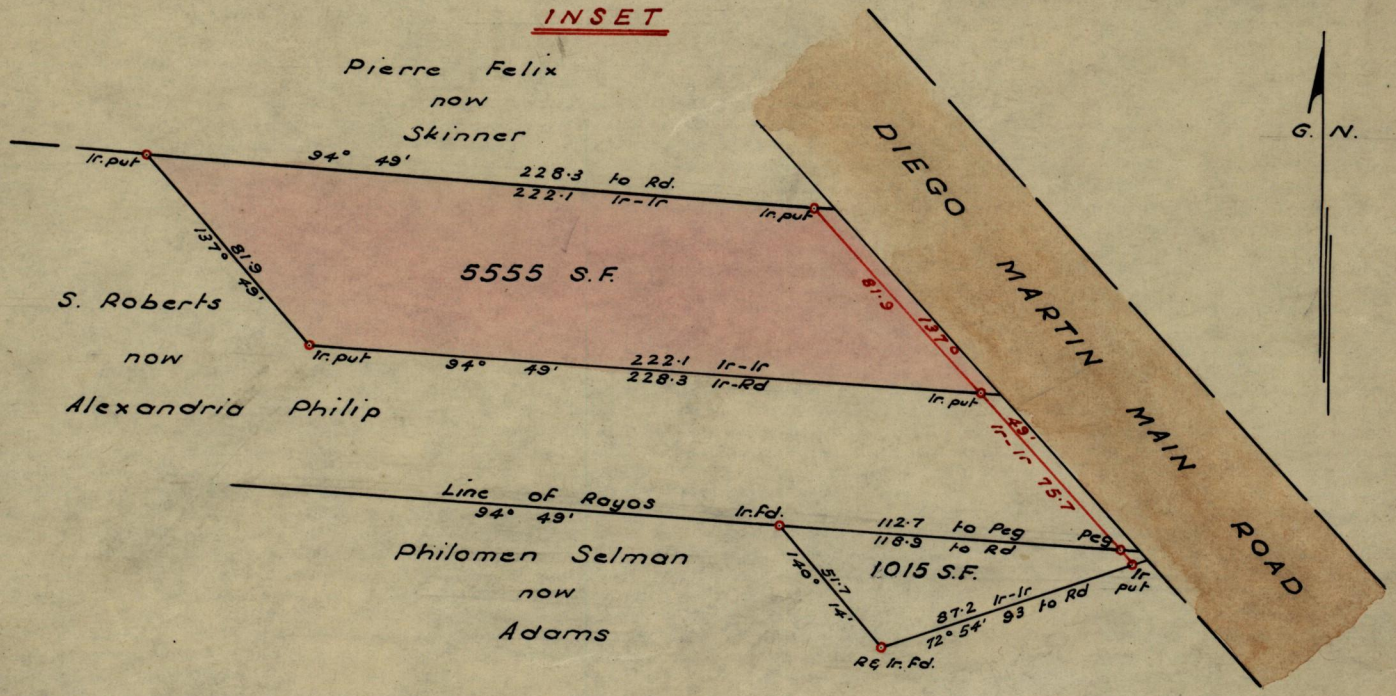
95()

145

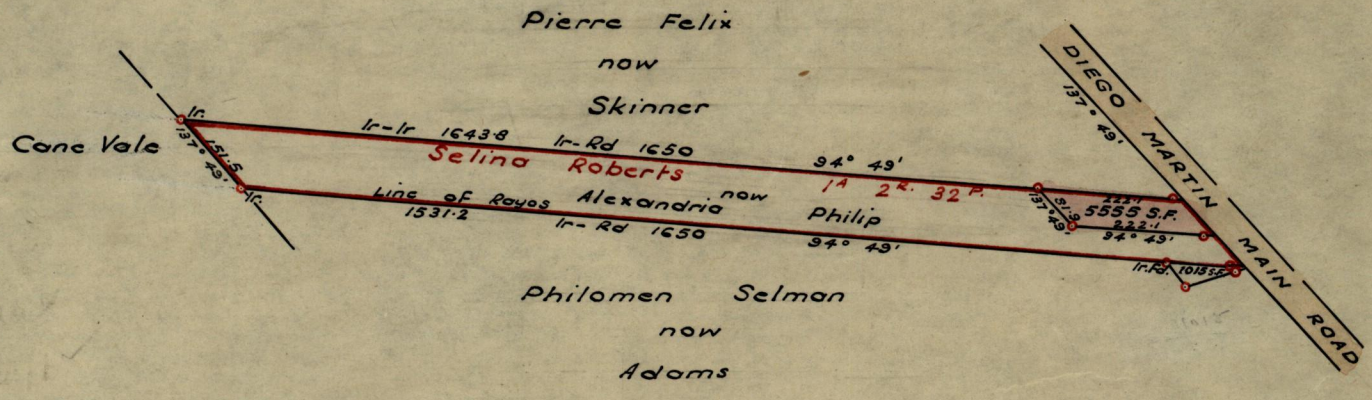
R.P.O. Vol. 48 Fol. 429
C.T. Vol. Fol.

Ward of Diego Martin
County of St. George
Cadastral Sheet A. 14. K & L

INSET



Scale ~ 1:500
Distances are in links



Approved
Fred. E. Farrell
Ag. Dep. Director of Surveys
26. 3. 62.

SCALE 1:2500
Distances are in links

Note: To obtain compass bearings ~~add~~ subtract 4 minutes
PLAN of a Parcel of land coloured pink in the Ward of Diego Martin
Containing Five thousand five hundred and Fifty five square Feet
Surveyed by me, with due authority, in February 1962 for Alexandria Philip nee Timothy
I certify that I have complied with rule 76 under Section 14 (2) (d) of the Land
Surveyors' Ordinance 1952, and that this plan is correct.

Checked by [Signature] 7/6/3/62
Entered Land Surveyor, Trinidad 29. 3. 1962