

132
132

Nº 15755

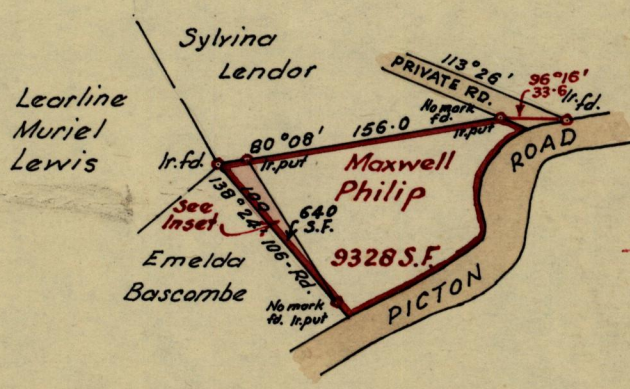
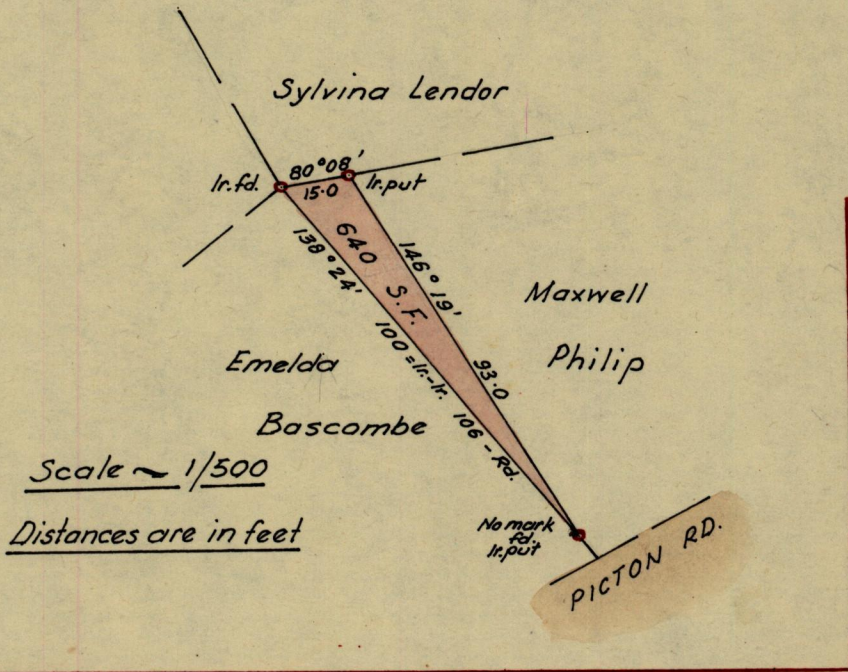
95()

R.P.O. Vol.
C.T. Vol. 1613

Fol
Fol 131

Ward of St. Ann's
County of St. George
Cadastral Sheet A. 20. K.

INSET



Approved

Fred. E. Parrell

Director of Surveys

2. 9. 65

SCALE ~ 1/1250

Note: To obtain ^{true} compass bearings ~~add~~ subtract 2 minutes Distances are in feet

Bearings are based on Solar observations.

PLAN of a Parcel of land coloured pink in the Ward of St. Ann's

Containing six hundred & forty sq. feet

Surveyed by me, with due authority, in July 1965.

I certify that I have complied with rule 76 under Section 14 (2) (d) of the Land Surveyors' Ordinance 1952, and that this plan is correct.

Checked by *MSJ* 2/9/65

Phil Douglas

Entered

Land Surveyor, Trinidad *Aug 20th* 19.65.