

Nº 3242

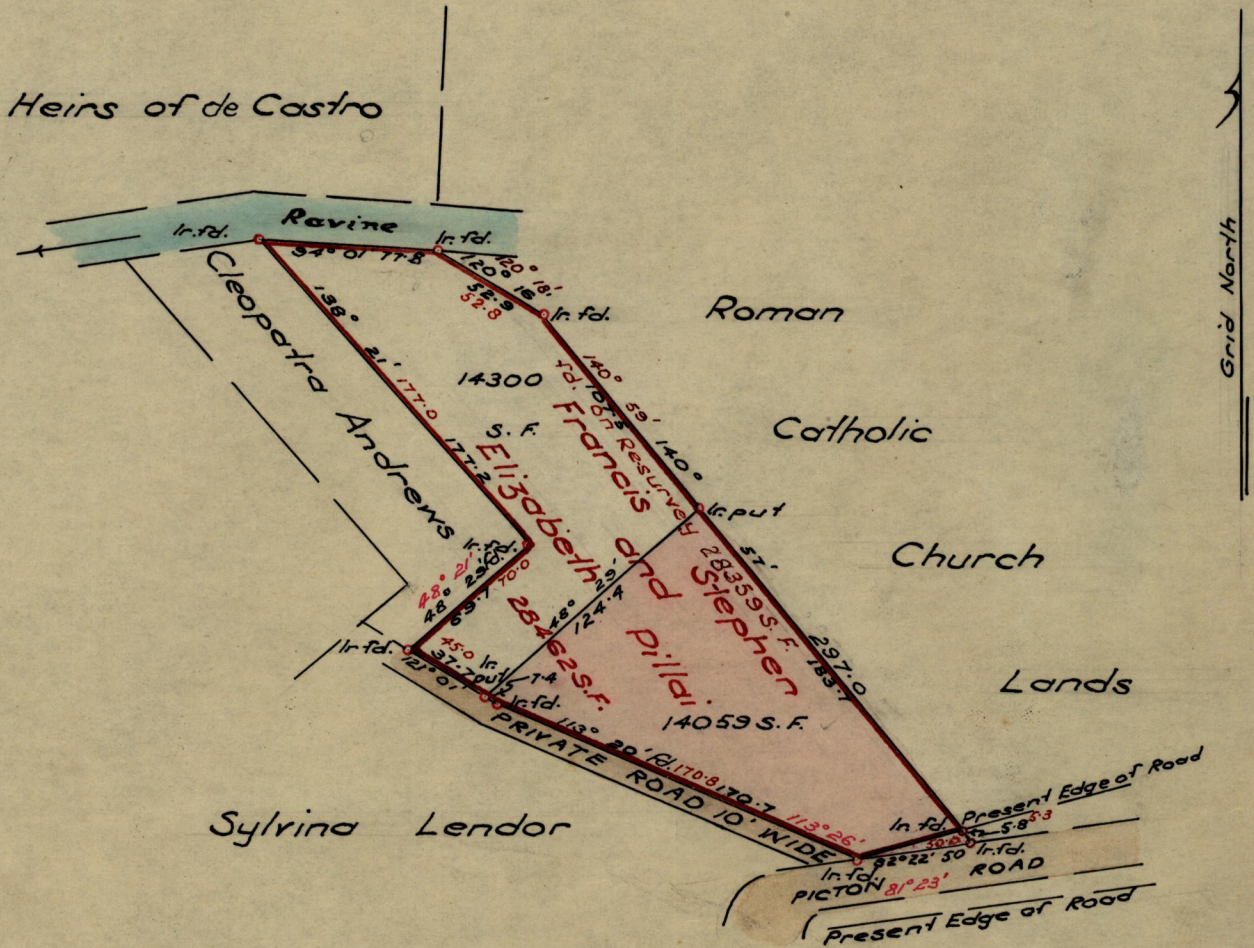
95()

131

R.P.O. Vol. 1381.
C.T. Vol.

Fol. 129.
Fol.

Ward of St. Anns
County of St. George
Cadastral Sheet A20. K.



Approved

Perry E. Farrell

Director of Surveys
10/12/60

SCALE ~ 1:1000
minutes

Distances are in feet

Note: To obtain compass bearings ~~add~~/subtract 1

PLAN of a Parcel of land coloured pink in the Ward of St. Anns
Containing fourteen thousand and fifty-nine square feet
Surveyed by me, with due authority, in October 1960.

I certify that I have complied with rule 76 under Section 14 (2) (d) of the Land
Surveyors' Ordinance 1952, and that this plan is correct.

Checked by.....

Perry E. Farrell

Entered

Land Surveyor, Trinidad 8-10-1960

G.P., Tr./To.-2274-4,000-10/60

*Checked
10/11/60*

LANDS AND SURVEYS VAULT RECORDS