

No 18652

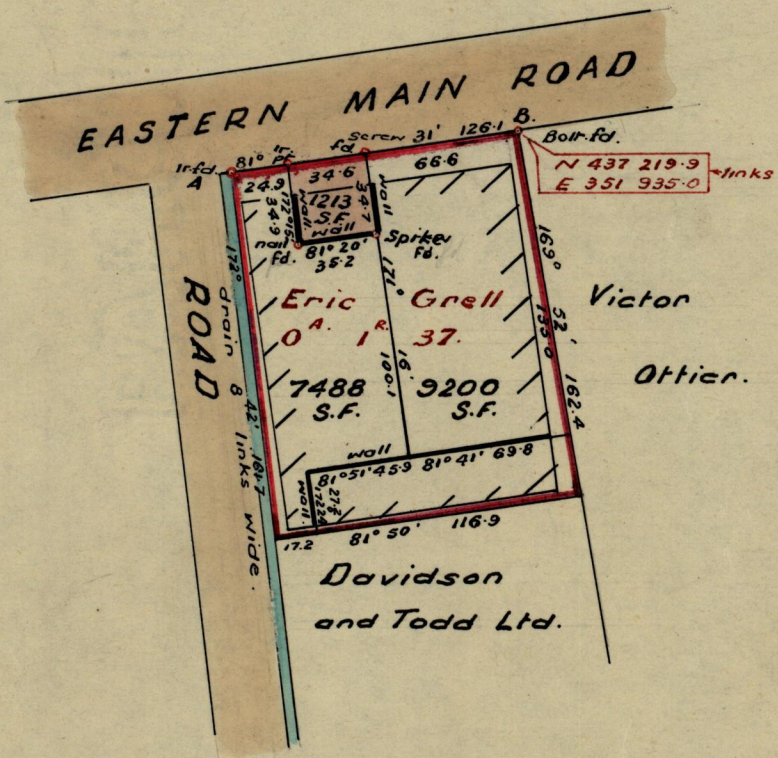
950

116

R.P.O. Vol. 1042 Fol. 245
C.T. Vol. 1260 Fol. 41

Ward of St. Anns.
County of St. George.
Cadastral Sheet A 20 P

G.N.



Approved

L. D. Farrell

Aj Director of Surveys

9-8-66

Bearings are based on line A-B

Cf. S.O. 196/60

SCALE ~ 1:1000

Note: To obtain compass bearings add/subtract

minutes

Distances are in feet.

PLAN of a Parcel of land coloured pink in the Ward of St. Anns.
Containing one thousand two hundred and thirteen square feet.
Surveyed by me, with due authority, in July 1966.

I certify that I have complied with rule 76 under Section 14 (2) (d) of the Land Surveyors' Ordinance 1952, and that this plan is correct.

Checked by *J.F.* 2-8-66

Entered

Land Surveyor, Trinidad

J. R. Jardine

2nd Aug. 1966

LANDS AND SURVEYS VAULT RECORDS