

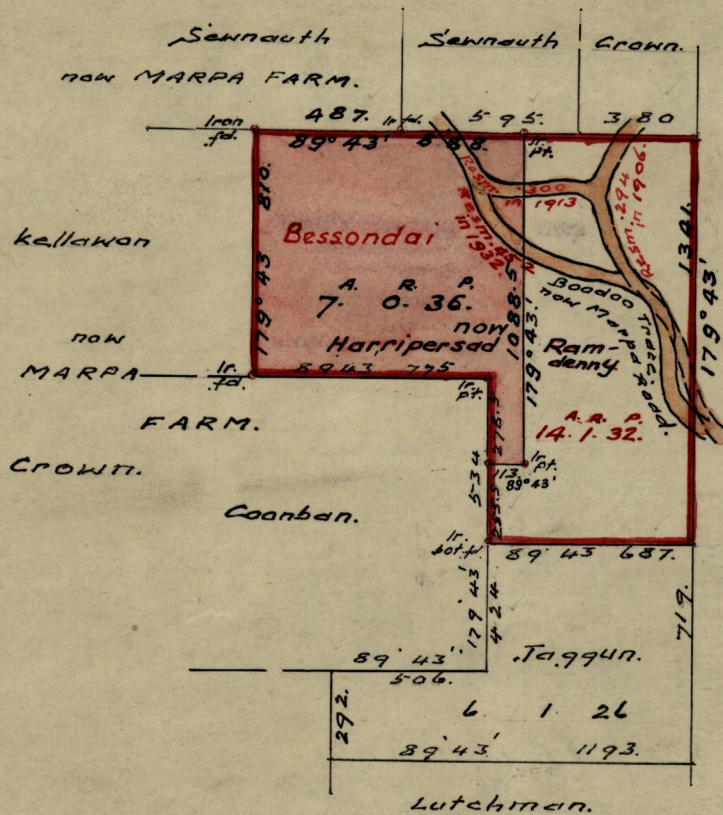
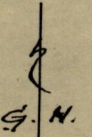
950

106  
106

Nº 4051

R.P.O. Vol. Fol.  
C.T. Vol. 979. Fol. 87.

Ward of Turure  
County of St. Andrew.  
Cadastral Sheet E. 7. H.



Approved  
*Fred E. Farrell*  
By *Dep* Director of Surveys  
3/11/60.

SCALE 1:5000  
minutes Distances are in links.

Note: To obtain compass bearings add/subtract 17.

PLAN of a Parcel of land coloured pink. in the Ward of Turure.

Containing Seven Acres and Thirty Six Perches.

Surveyed by me, with due authority, in Sept. 1959, for Basdeo Ramdenny.

I certify that I have complied with rule 76 under Section 14 (2) (d) of the Land Surveyors' Ordinance 1952, and that this plan is correct.

Checked by *3/11/60* *W. J. Thinning*

Entered Land Surveyor, Trinidad 29<sup>th</sup> Oct 1960

LANDS AND SURVEYS VAULT RECORDS