

Nº 21945

950

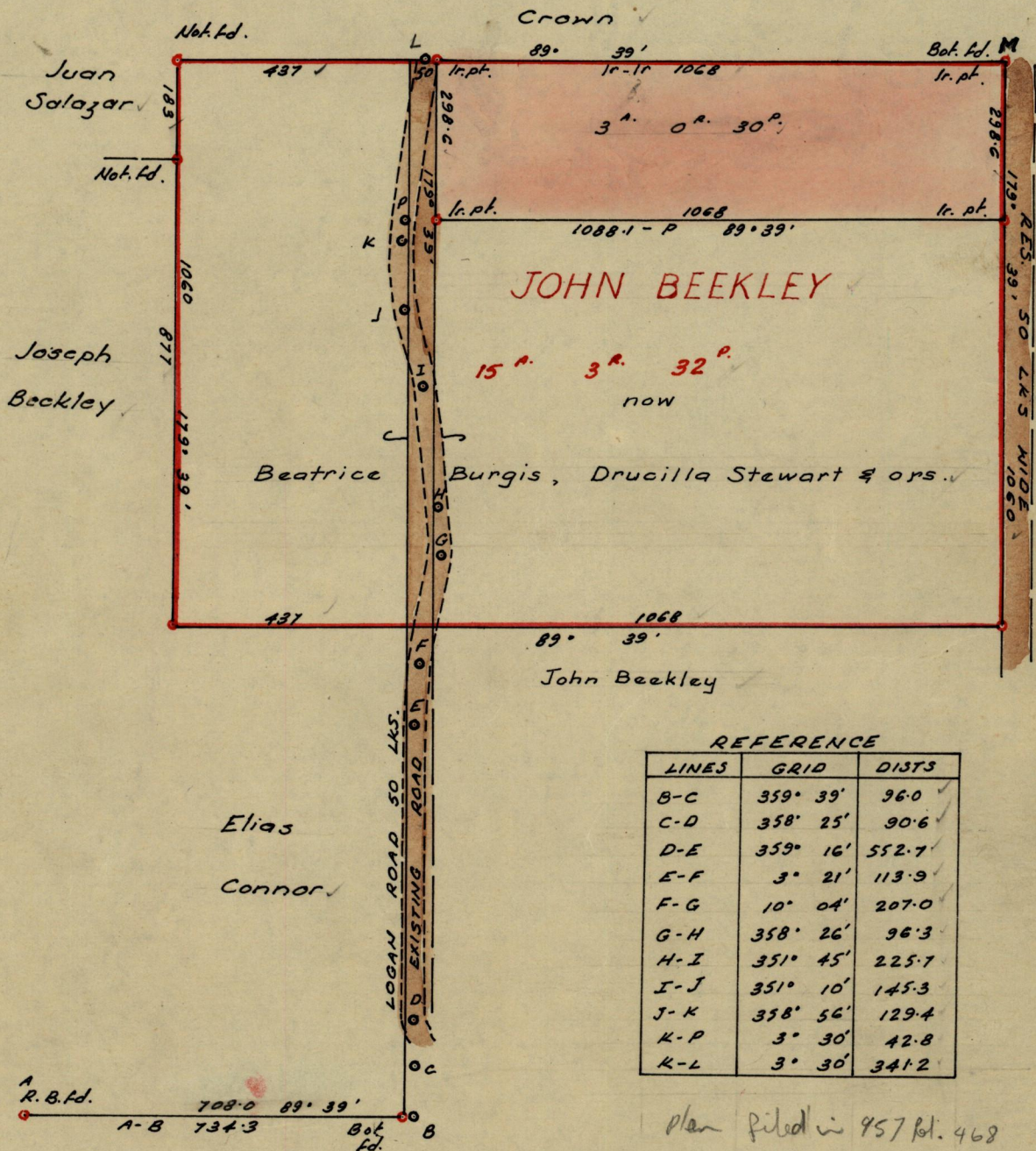
102

R.P.O. Vol. 40
C.T. Vol.

Fol. 519
Fol.

Ward of Manzanilla
County of St. Andrew
Cadastral Sheet E3J

G N



Approved

L. A. Farrell

Director of Surveys
18.3.68

SCALE ~ 1:2500

Note: To obtain compass bearings add/subtract 21 minutes Distances are in links

PLAN of a Parcel of land coloured pink in the Ward of Manzanilla
Containing three acres & thirty perches
Surveyed by me, with due authority, in Nov. 1967

I certify that I have complied with rule 76 under Section 14 (2) (d) of the Land
Surveyors' Ordinance 1952, and that this plan is correct.

Checked by *[Signature]* 19.3.68.

[Signature]

Entered

Land Surveyor, Trinidad *[Signature]* 1968