

U.P.R.N.....

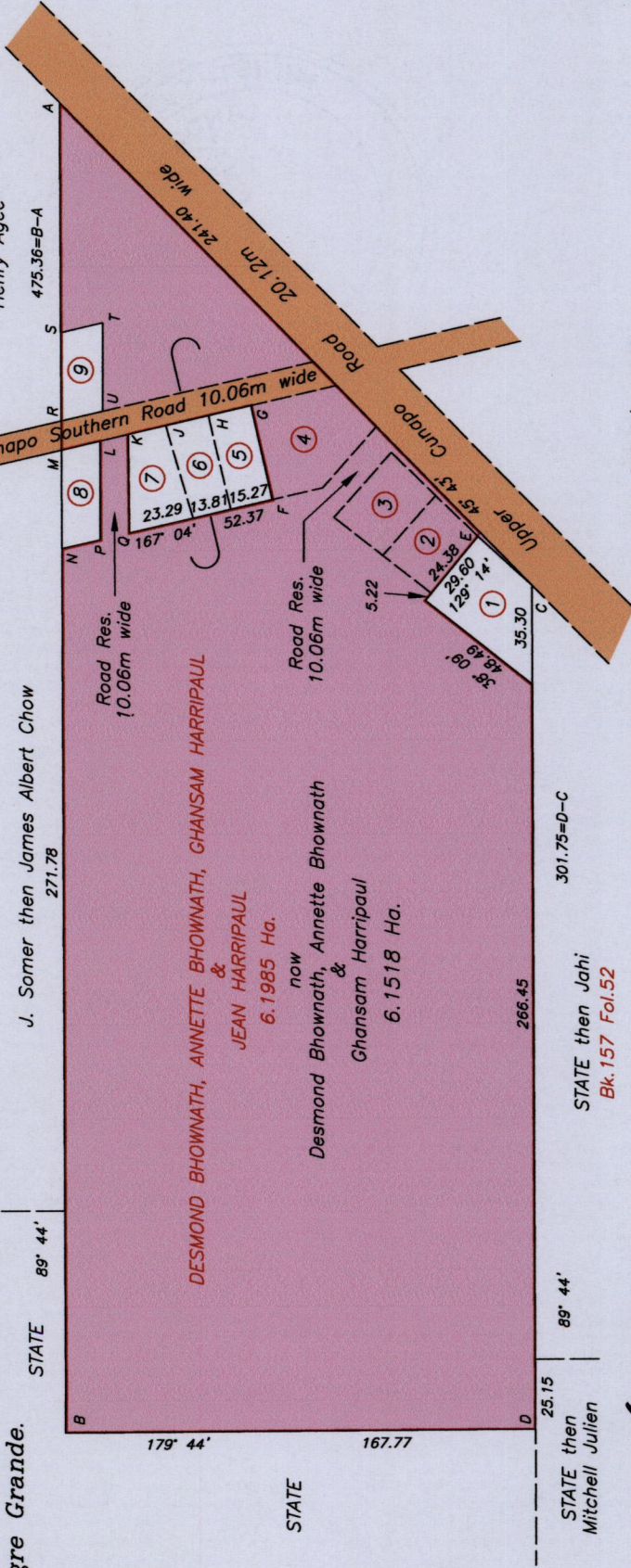
R.P.O. Vol. 34 Fol. 525

C.T. Vol. 4435 Fol. 339

Address - LP#42 Cunapo Southern Road, Maraj Hill,
Sangre Grande.

REMAINING PORTION

Ward of Turure
County of St. Andrew
Cadastral Sheet E.2.E. 25F
3/b



Legend

C - E	42' 25'	26.09	14.08
F - G	77' 04'	34.29	35.17
G - H	347' 04'	15.27	14.08
H - J	347' 04'	15.58	35.17
J - K	347' 04'	13.84	10.36
K - Q	269' 44'	35.17	31.39
K - L	347' 04'	10.30	15.24
L - M	347' 04'		31.39
M - N	269' 44'		269' 44'
N - P	167' 04'		167' 04'
P - L	89' 44'		89' 44'
M - R	89' 44'		89' 44'
R - S	89' 44'		89' 44'
S - T	167' 04'		167' 04'
T - U	269' 44'		269' 44'
U - R	347' 04'		347' 04'

SCALE 1:2500

Distances are in metres

Approved.....
Director of Surveys

Note - UTM (Nap-Zone 20) Coordinates obtained from hand held GPS receiver + 5.00m

Note: Bearings are Cassini grid based on solar observations

Plan of six point one nine eight five hectares originally granted to DESMOND BHOWMATH, ANNETTE BHOWMATH, GHANSAM HARRIPAUL & JEAN HARRIPAUL showing portion coloured pink and containing six point one five one eight hectares being the remainder after one previous transfer of other portions of land. I certify that this plan represents the remaining portion.

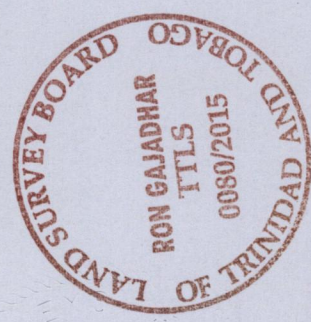
Checked by.....

Entered on.....
Trinidad & Tobago Land Surveyor..... 11/10/15



A = 703800 E (U.T.M)
N = 1168560 N (U.T.M)
Ref :- Bk.1137 Fol.205
Bk.1003 Fol.128

Lot#	Certificate of Title#	Area
1	C.T. Vol.2106 Fol.195	1046.6m ²
5	C.T. Vol.2106 Fol.189	523.6m ²
6	C.T. Vol.2106 Fol.189	503.9m ²
7	C.T. Vol.2850 Fol.101	637.9m ²
8	C.T. Vol.3887 Fol.585	463.1m ²
9	C.T. Vol.5569 Fol.335	466.7m ²





1656/99