

1656

91

UPRN No.

Cadastral Sheet G. 15. C., $\frac{64E}{2/b}$

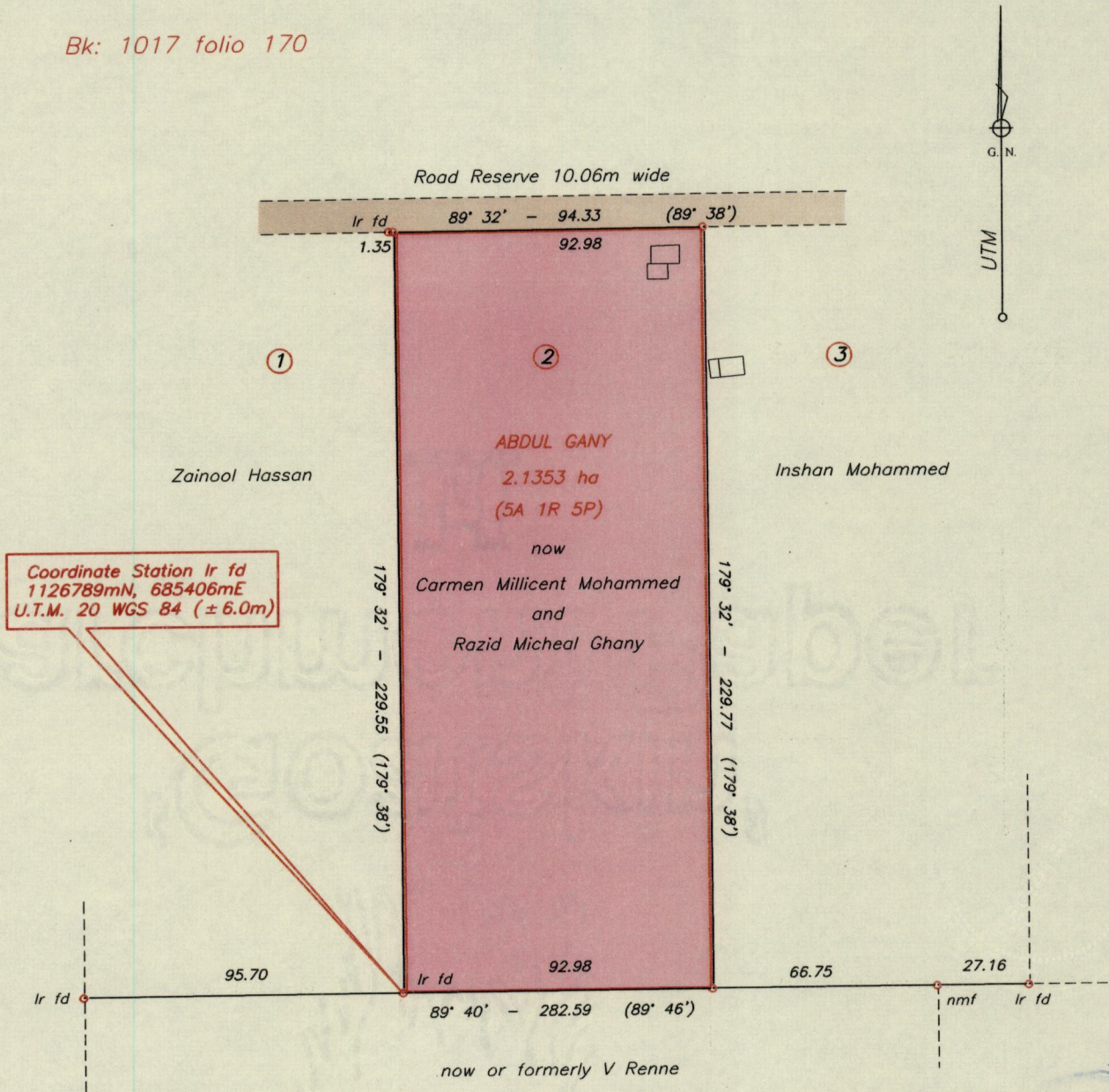
R.P.O. Vol. 95 Fol 509

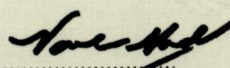
Ward of Ortoire

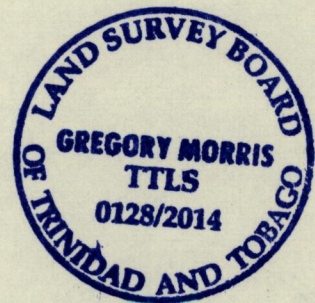
C.T Vol. 3150 Fol 391

County of Victoria

Bk: 1017 folio 170



Approved 
Director of Surveys 30/4/15



⊙ Denotes Iron Put unless otherwise stated
Bearings are UTM Grid based on Solar Obs.

Distances are in Metres

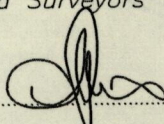
SCALE 1 : 2000

PLAN of one parcel of land coloured pink in the Ward of Ortoire
Containing two point one three five three hectares
Surveyed by me, with due authority, in June 2013

Certified Correct in accordance with Regulation 25(1) of the Land Surveyors' Regulations 1998

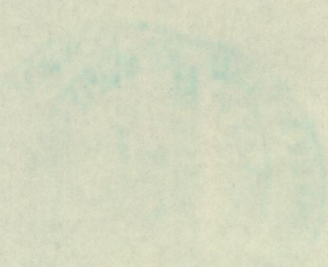
Checked by

Entered by


Trinidad and Tobago Land Surveyor 28th June 2013

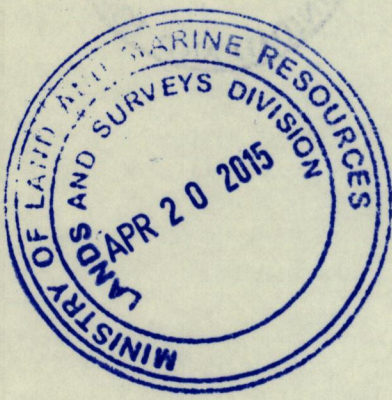
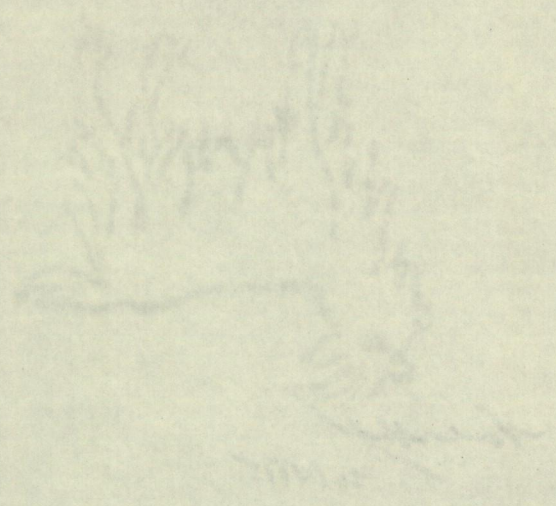
10

1000



11

Faint, mirrored text, possibly bleed-through from the reverse side of the page.



1656/91