

1056

33

R.P.O. Vol. 145 Fol. 51

Cadastral Sheet 62C, 62F, G.6.O, G.11.C.
4/d 2/b

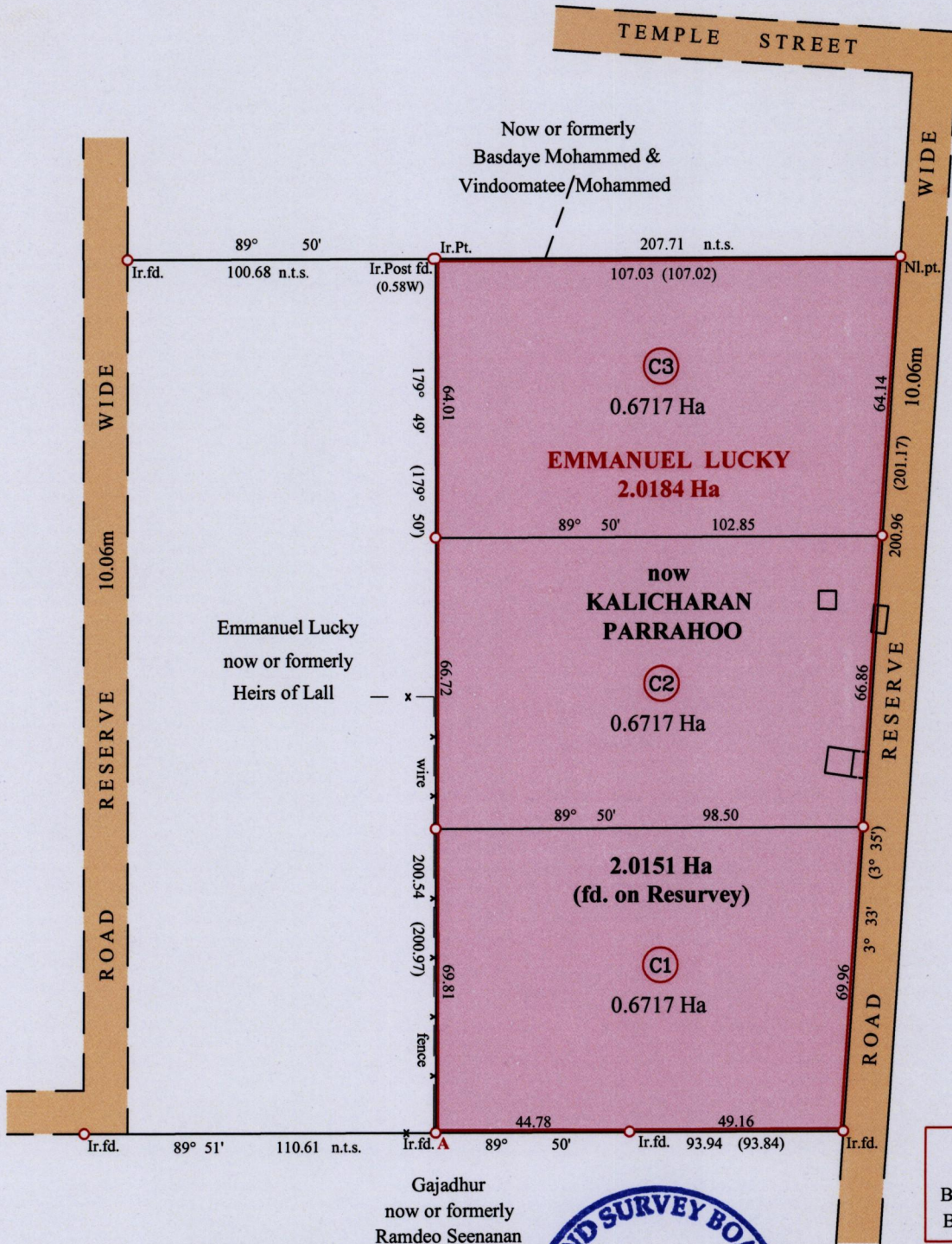
C.T. Vol. Fol.

Ward of Siparia

County of St. Patrick

A Ir.f.d - 657428mE, 1127579mN
UTM Zone 20, Naparima (+/- 5.00m)
Direct Observation-GPS Handheld

Mon Desir



G. N.
U. T. M.

Vide
Plan A.D.16
Bk. 475 Fol. 118
Bk. 476 Fol. 55

Approved
Director of Surveys 2/14/15



Bearings are U.T.M. Grid based on Solar Obs.

SCALE 1:1500
Distances are in Metres

○ Denotes Iron Put unless otherwise stated

PLAN of 3 parcels of land coloured pink in the Ward of Siparia

Containing together two point zero one five one Hectares

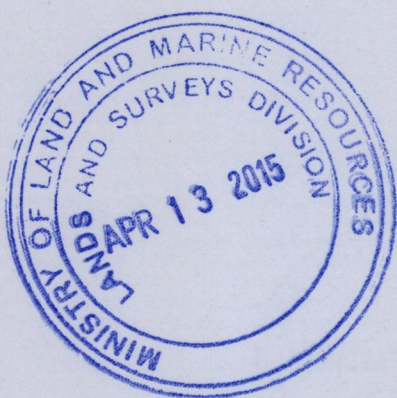
Surveyed by me, with due authority, in October 2013

Certified Correct in accordance with Regulation 25(1) of the Land Surveyors Regulations 1998

Entered on
Checked by

.....
Trinidad & Tobago Land Surveyor 09th/APRIL/2015

1020



1656/89